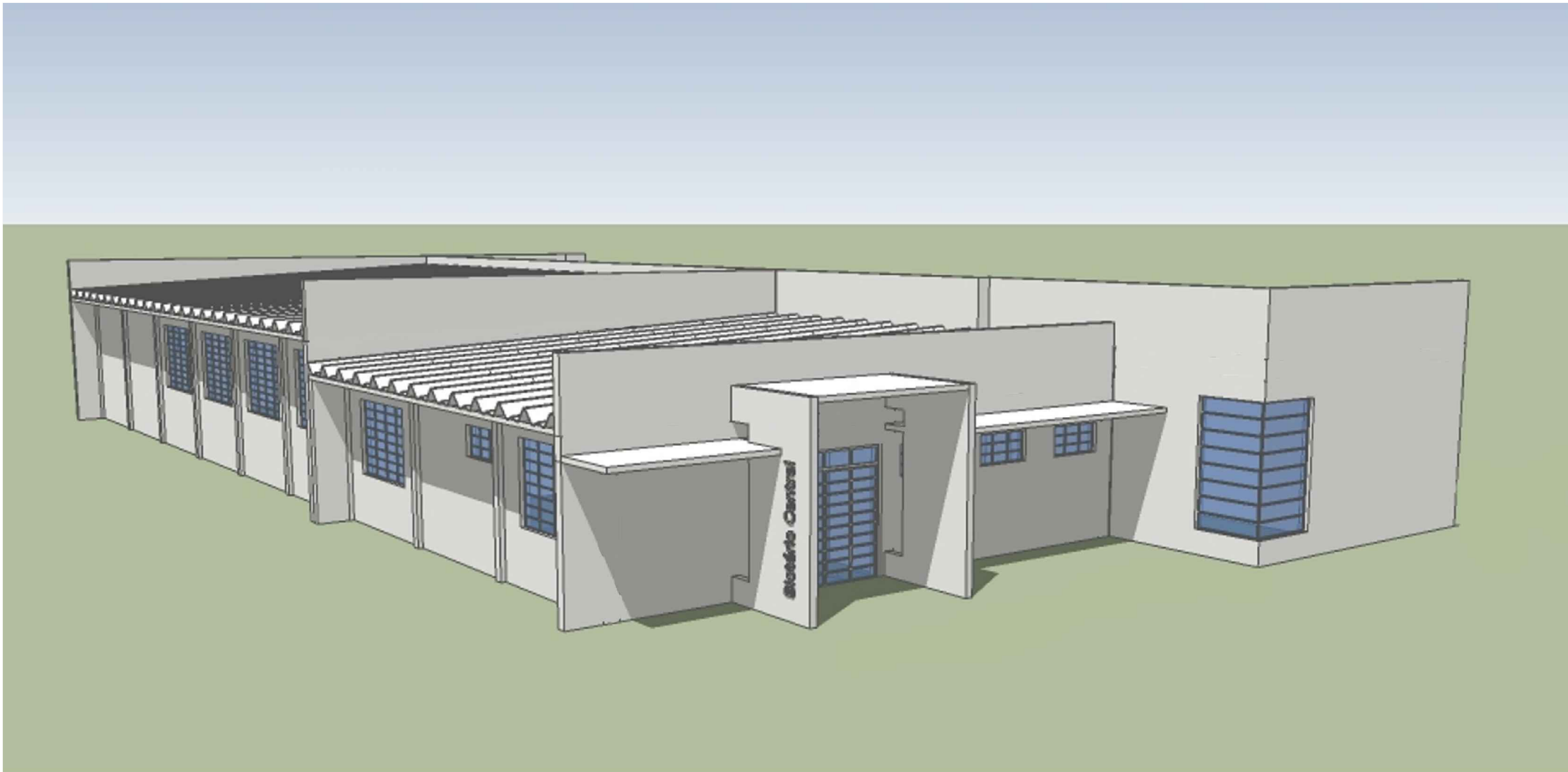
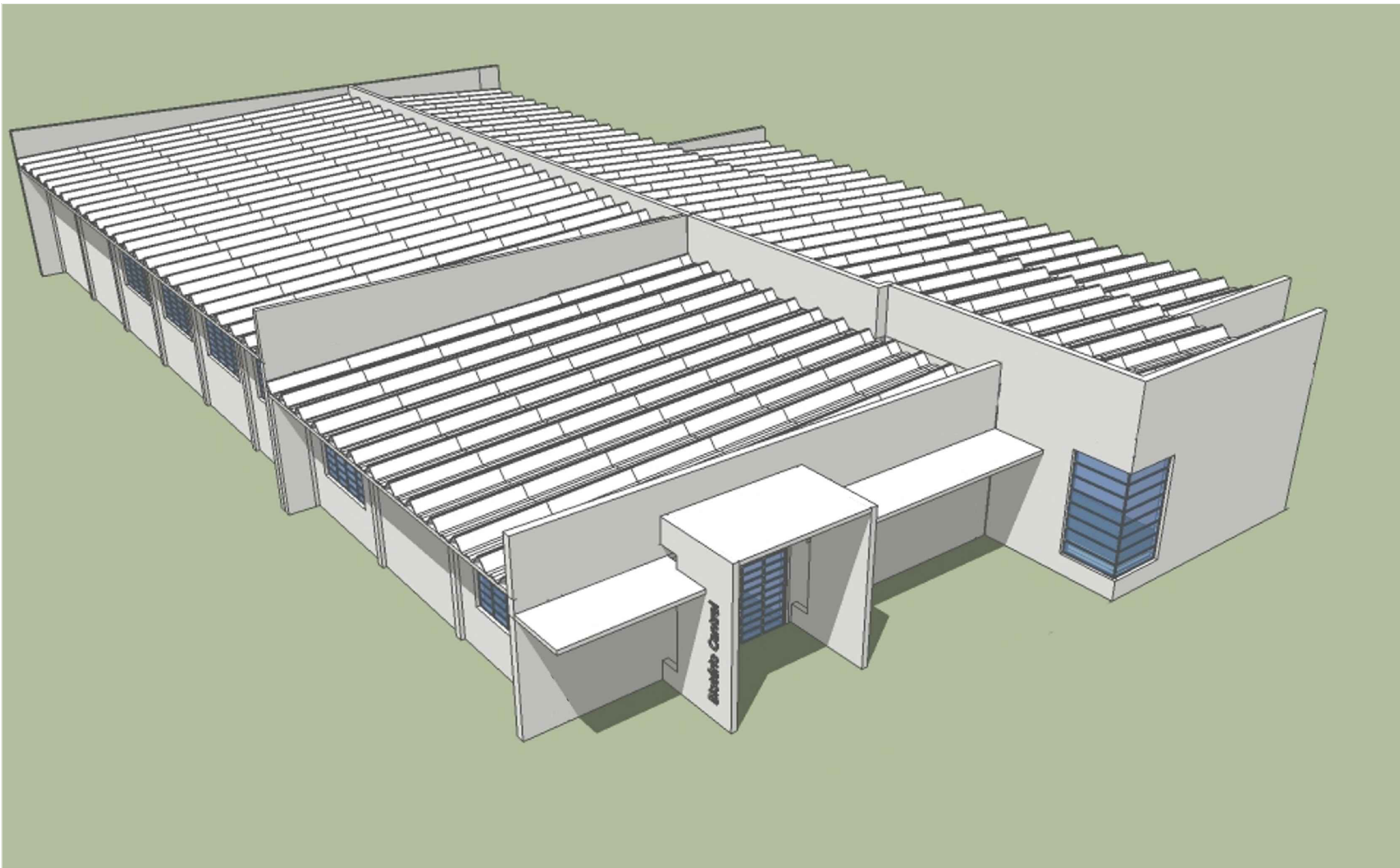


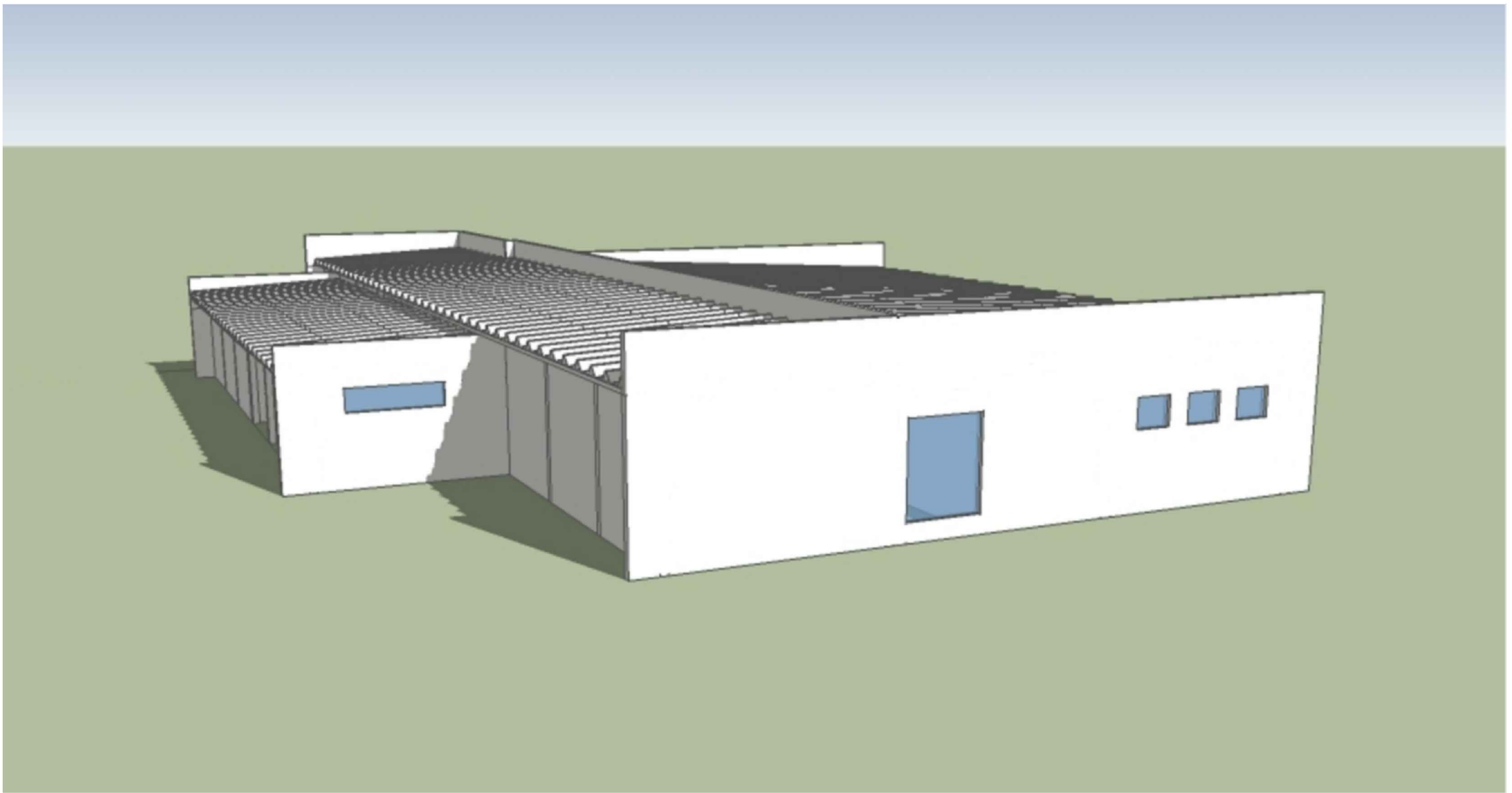
biotério - fachadas sul e oeste




biotério - fachadas norte e oeste



biotério - cobertura



biotério - fachadas leste e sul

|   |          |   |                |
|---|----------|---|----------------|
| <br>UFSC |          | PRÓ-REITORIA DE INFRAESTRUTURA<br>COORDENADORIA DE OBRAS E<br>PLANEJAMENTO AMBIENTAL E URBANO |                |
| DATA:   | SET/2010 | CENTRO DE CIENCIAS RURAIS   | PREDIO Nº98-B  |
| ESCALA:   | 1:50     | AMPLIAÇÃO DO BIOTÉRIO CENTRAL   |                |
|   |          | perspectivas  |                |
|   |          | PROJETO   | PRANCHA<br>4/4 |
|   |          | Arq. Urb. Alessandro Nunes Diesel   |                |
|   |          | estagiário:   |                |
|   |          | acad. Eng. Civil Jean Favaretto   |                |