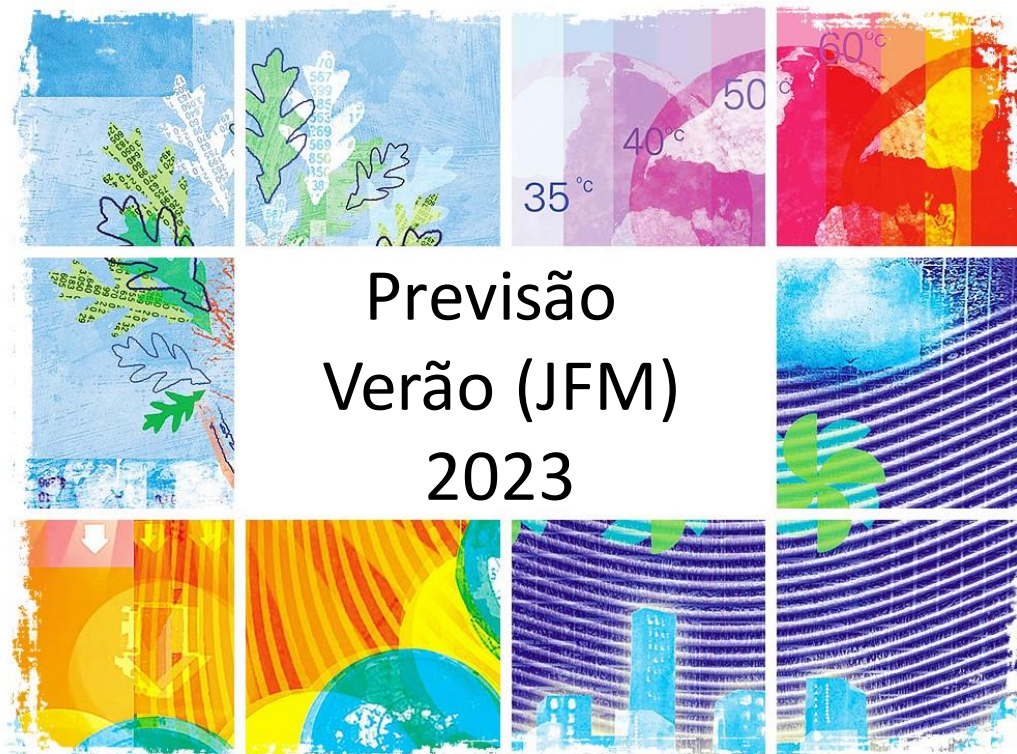


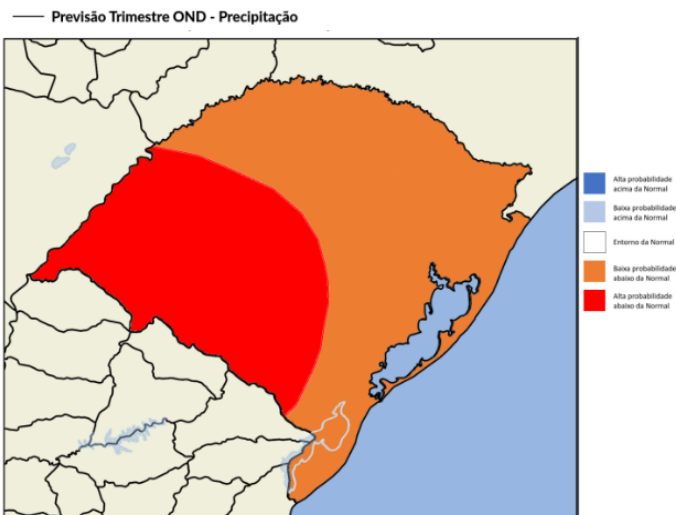
V Reunião Climática Mensal



Verificação da previsão para OND

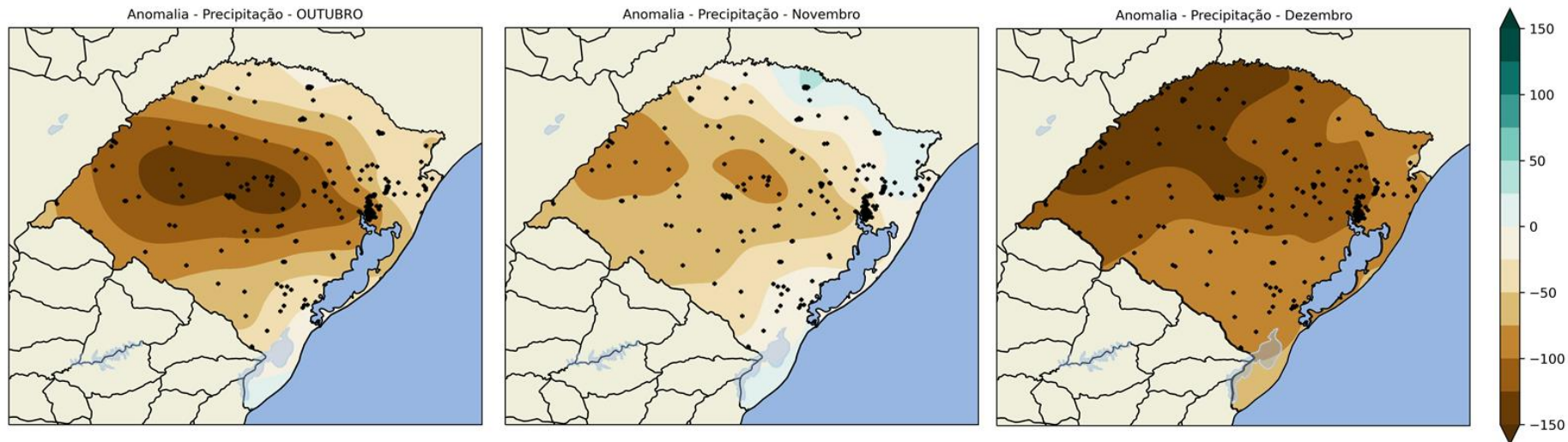
Previsão por consenso realizada em Setembro de 2022

Precipitação



Previsto:

Observado:

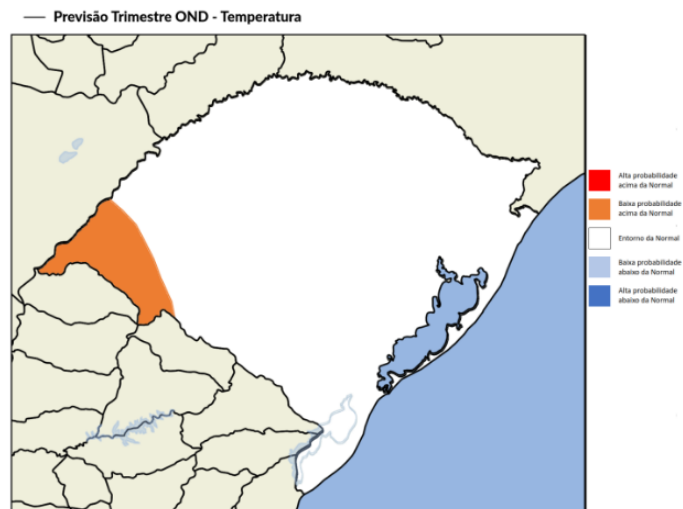


Verificação da previsão para OND

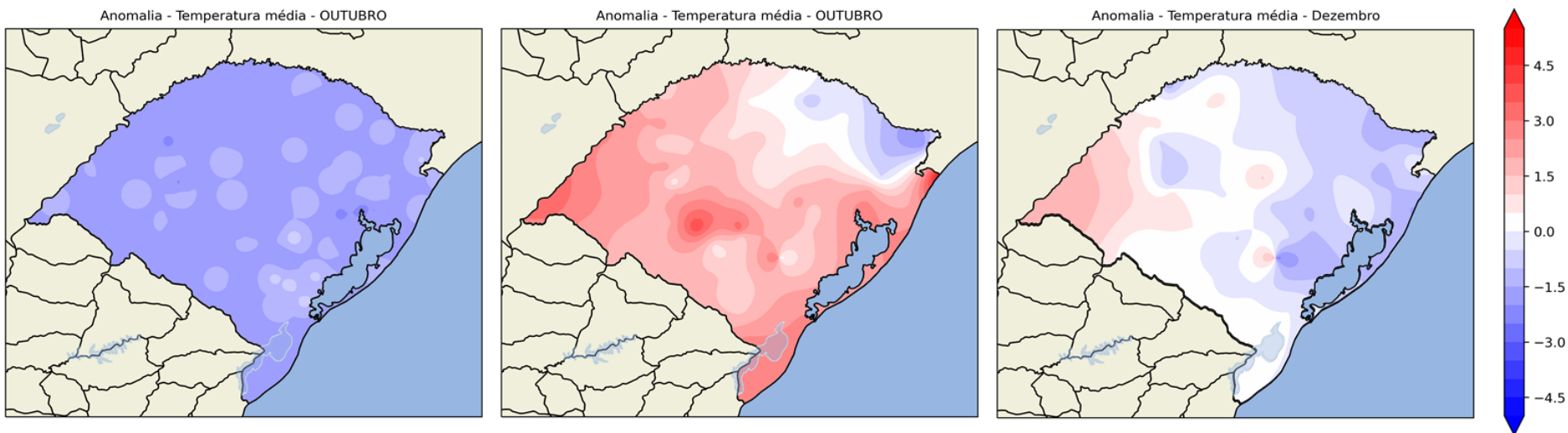
Previsão por consenso realizada em Setembro de 2022

Temperatura do ar

Previsto:



Observado:



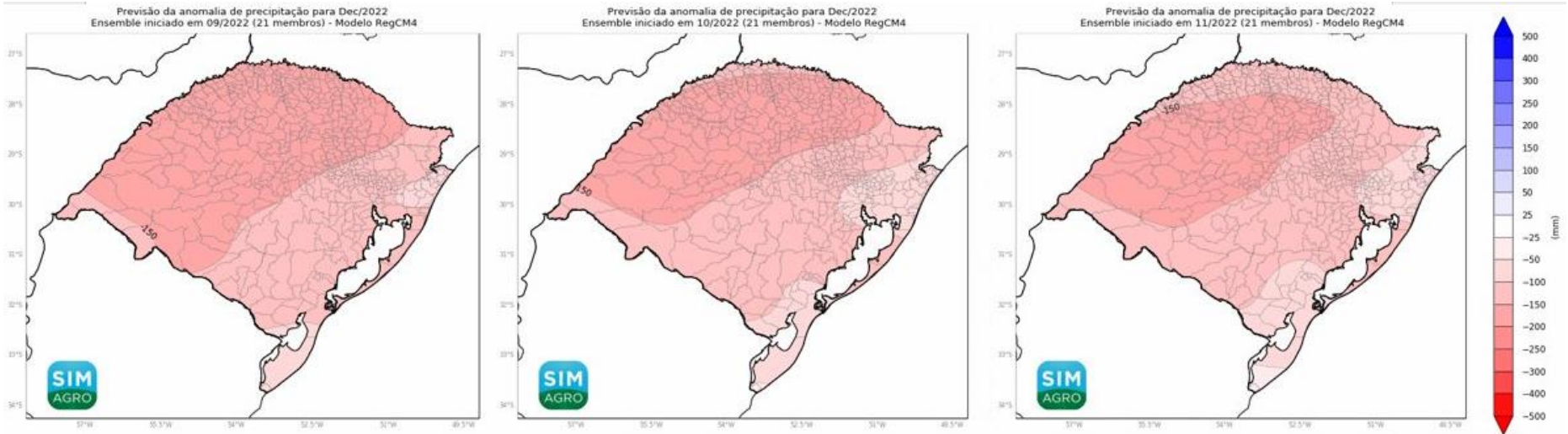
Verificação dos modelos por tempo de antecedência

Anomalia de Precipitação RegCM4 do SIMAGRO (Dezembro/2022)

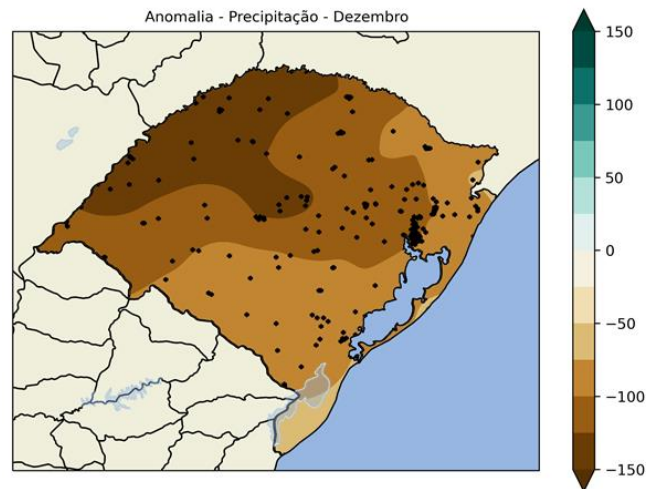
Iniciado em Setembro/2022

Iniciado em Outubro/2022

Iniciado em Novembro/2022



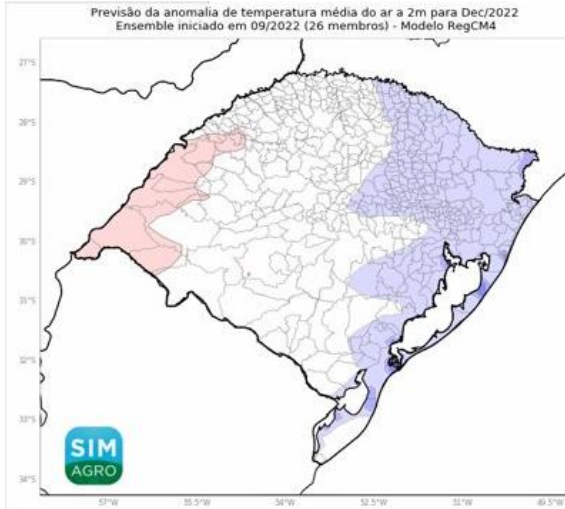
Observado:



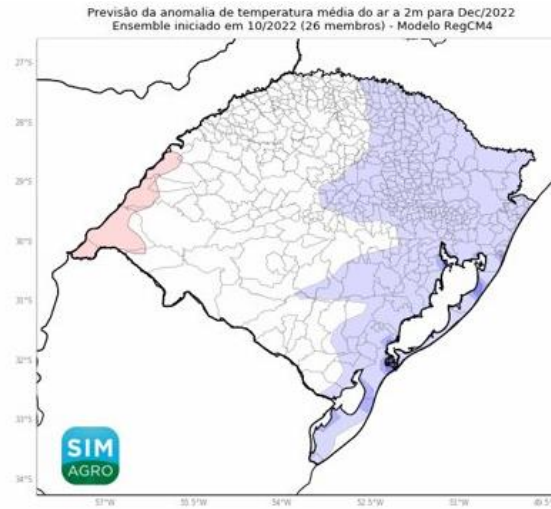
Verificação dos modelos por tempo de antecedência

Anomalia de Temperatura RegCM4 do SIMAGRO (Dezembro/2022)

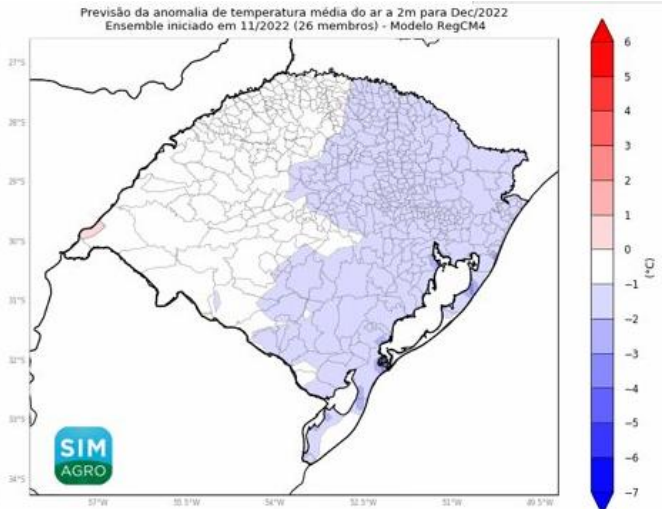
Iniciado em Setembro/2022



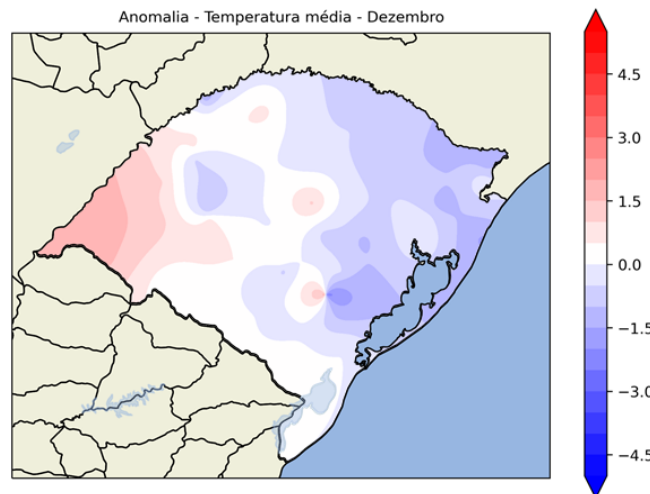
Iniciado em Outubro/2022



Iniciado em Novembro/2022



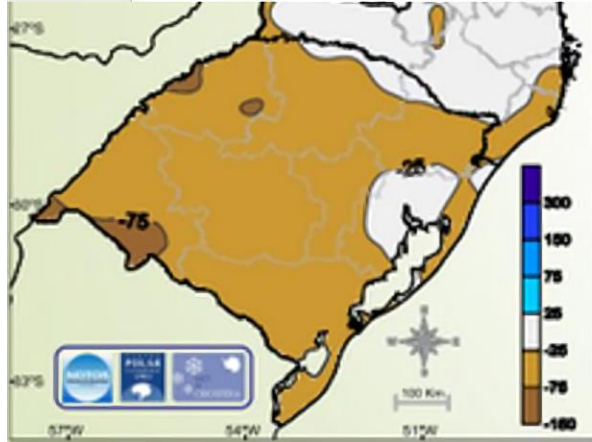
Observado:



Verificação dos modelos por tempo de antecedência

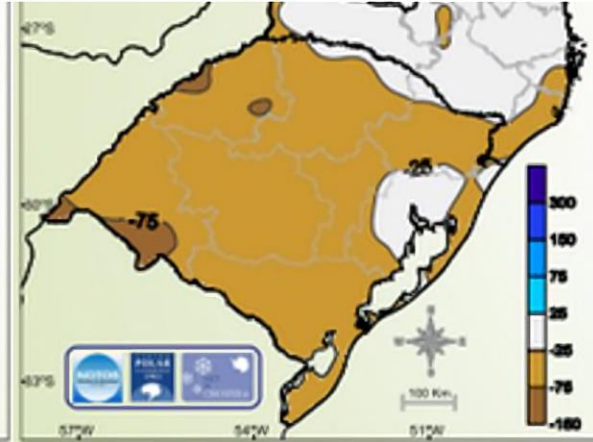
Anomalia de Precipitação MoReClima-SUL (Dezembro/2022)

Iniciado em Setembro/2022



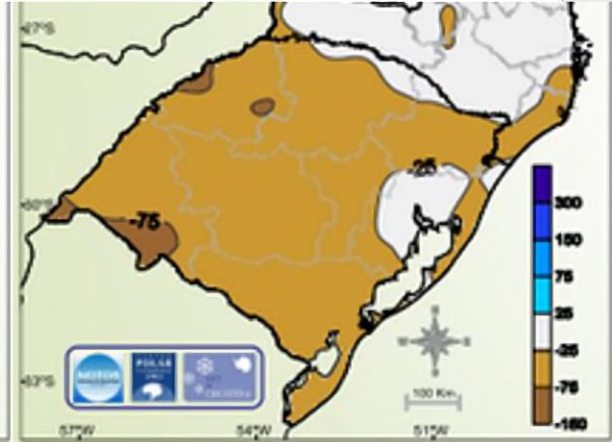
Desvio em milímetros (mm)
(Climatologia GPCC – 1981-2010)

Iniciado em Outubro/2022



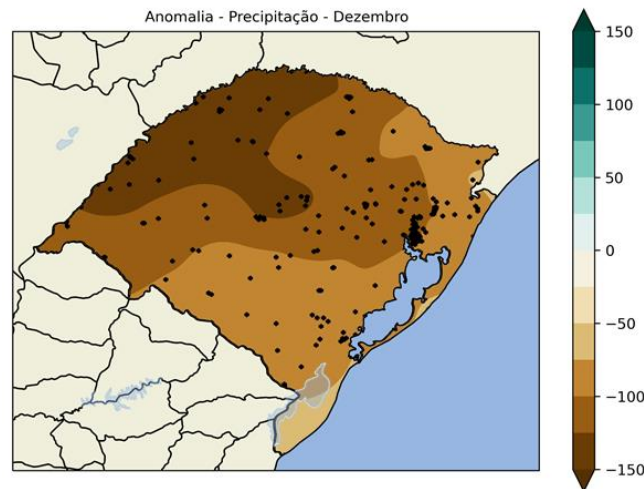
Desvio em milímetros (mm)
(Climatologia GPCC – 1981-2010)

Iniciado em Novembro/2022



Desvio em milímetros (mm)
(Climatologia GPCC – 1981-2010)

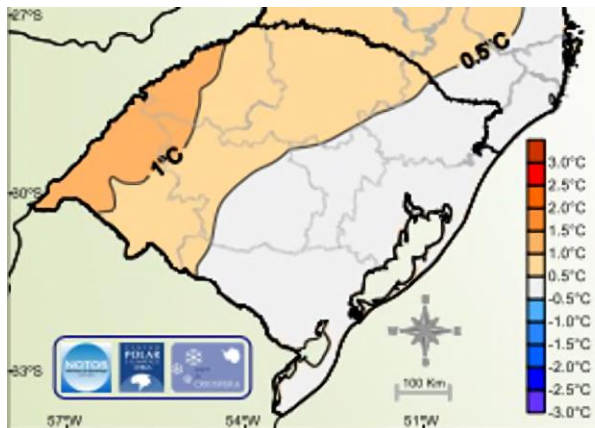
Observado:



Verificação dos modelos por tempo de antecedência

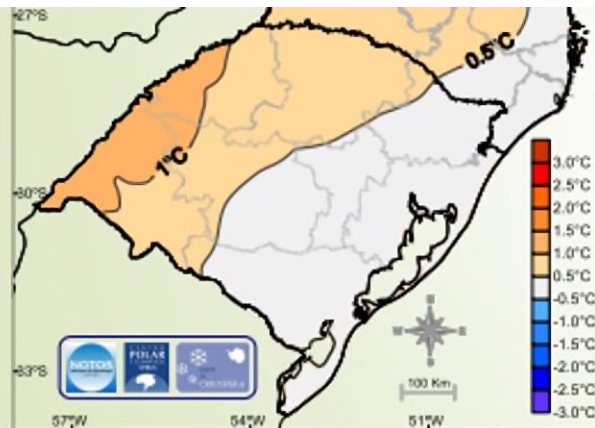
Anomalia de Temperatura MoReClima-SUL (Dezembro/2022)

Iniciado em Setembro/2022



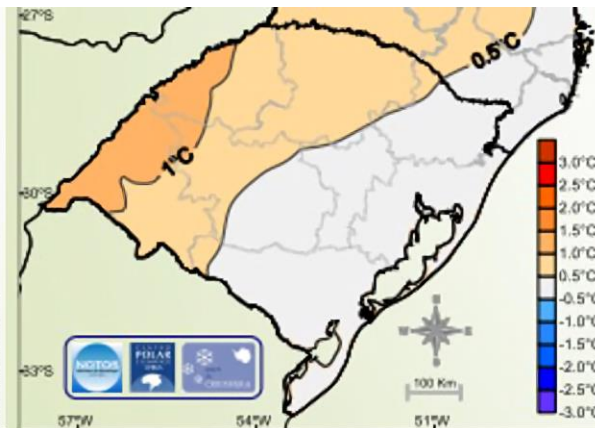
Desvio em graus Celsius (°C)
(Climatologia CRU – 1981-2010)

Iniciado em Outubro/2022



Desvio em graus Celsius (°C)
(Climatologia CRU – 1981-2010)

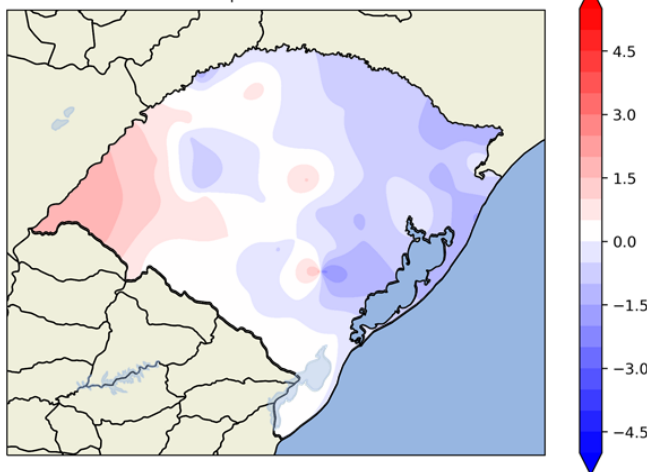
Iniciado em Novembro/2022



Desvio em graus Celsius (°C)
(Climatologia CRU – 1981-2010)

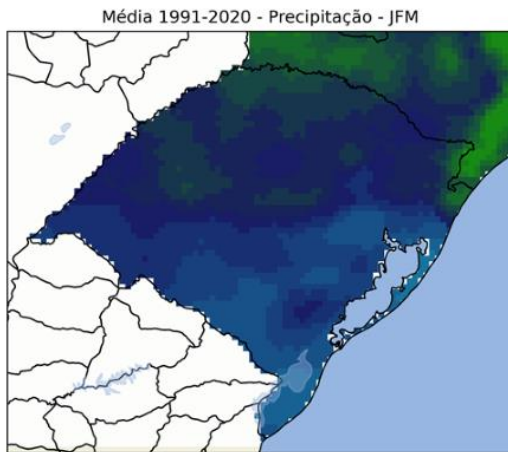
Observado:

Anomalia - Temperatura média - Dezembro

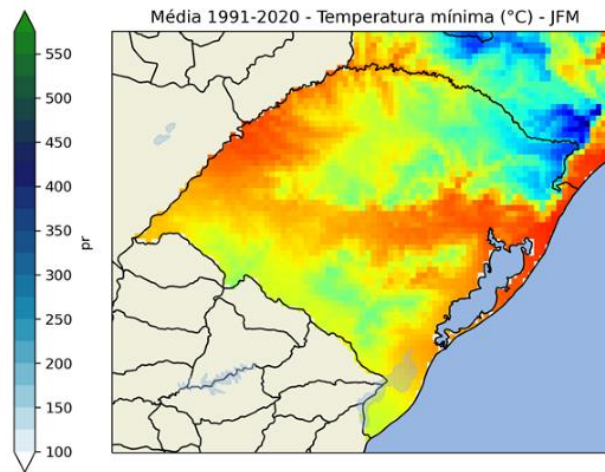


Climatologia de JFM

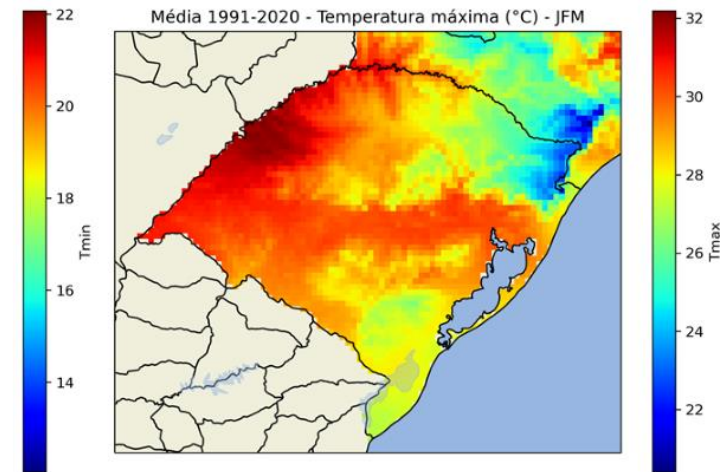
- Caracterizada por um contraste de chuva entre o centro-sul do RS, mais seco e o centro-norte do estado, relativamente mais úmido. Maiores acumulados no norte e litoral-norte do estado.
- As médias de temperatura mínima e máxima são mais altas no noroeste do RS e na faixa central do estado até o litoral norte;



Precipitação



Temperatura mínima



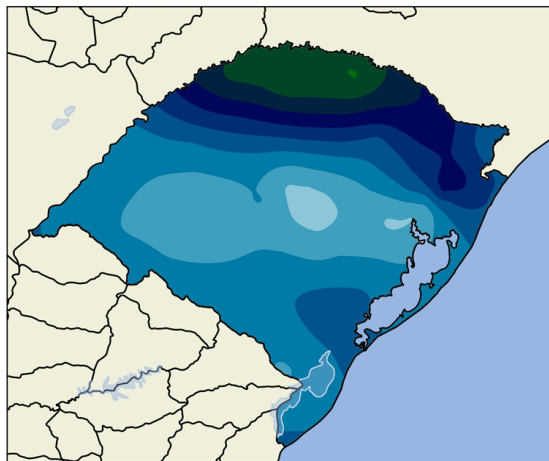
Temperatura máxima

Condições observadas em OND/2022

Valores absolutos

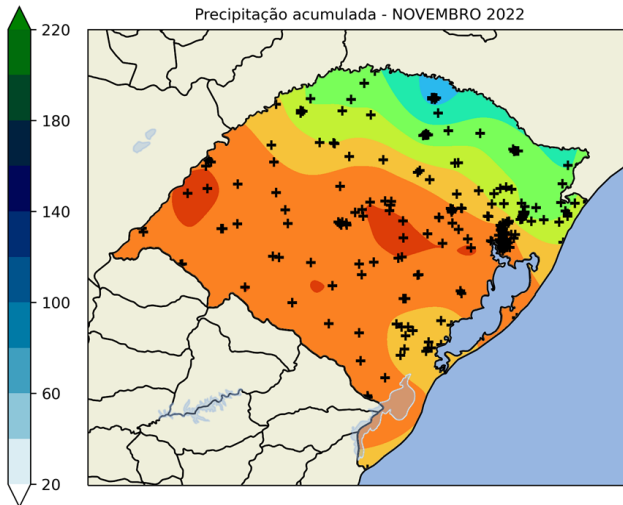
Outubro

Precipitação acumulada - OUTUBRO 2022



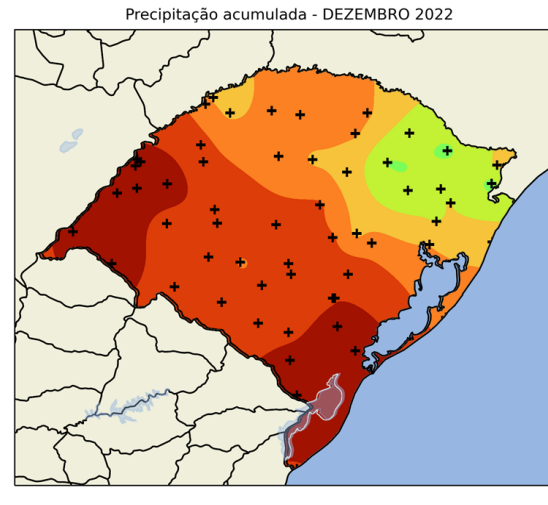
Novembro

Precipitação acumulada - NOVEMBRO 2022



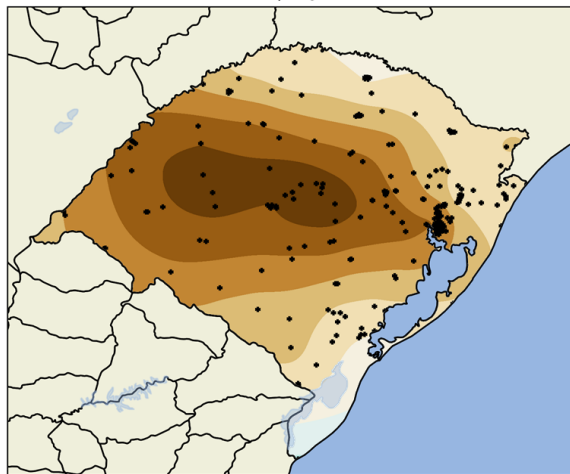
Dezembro

Precipitação acumulada - DEZEMBRO 2022

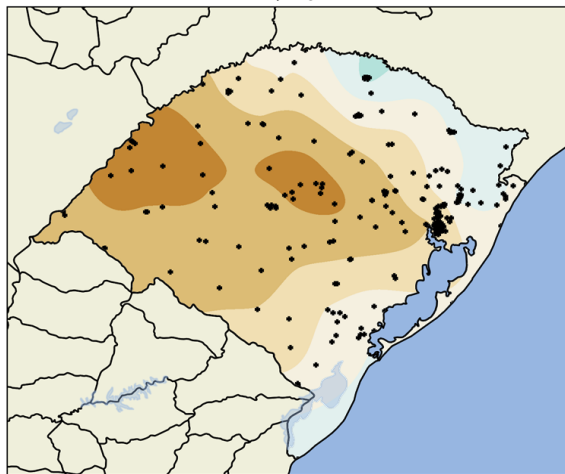


Anomalias

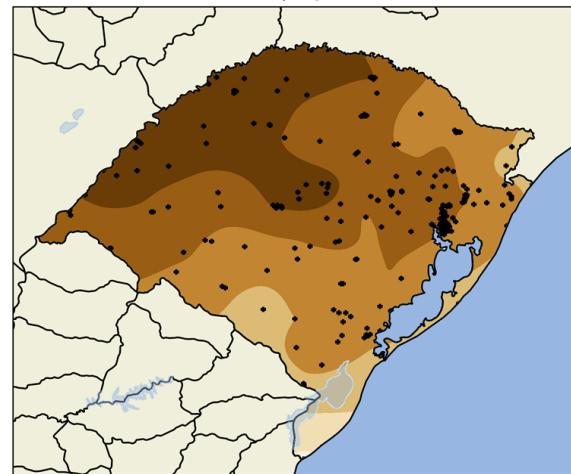
Anomalia - Precipitação - OUTUBRO



Anomalia - Precipitação - Novembro



Anomalia - Precipitação - Dezembro

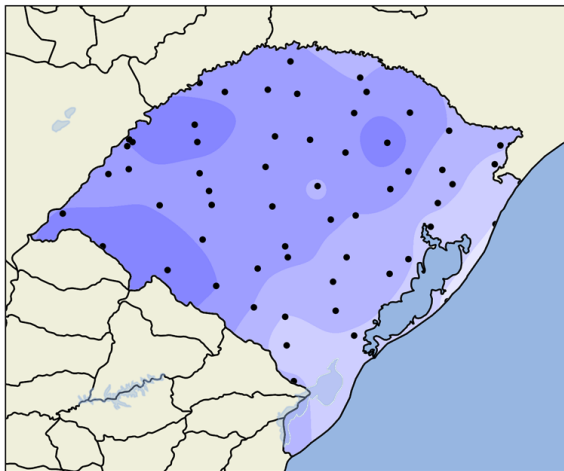


Condições observadas em OND/2022

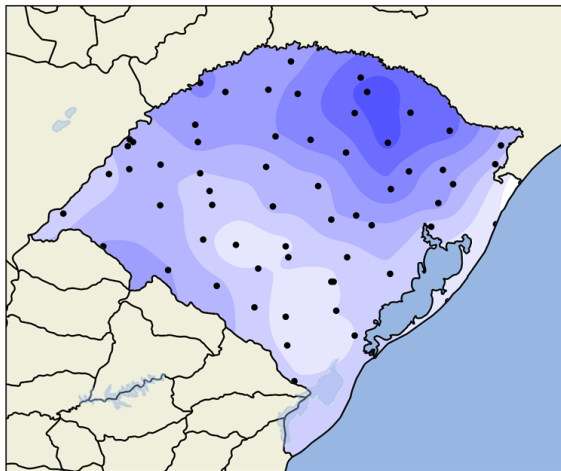
Anomalias

Tmin

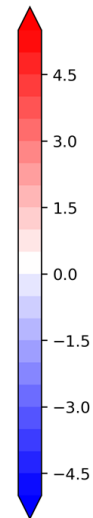
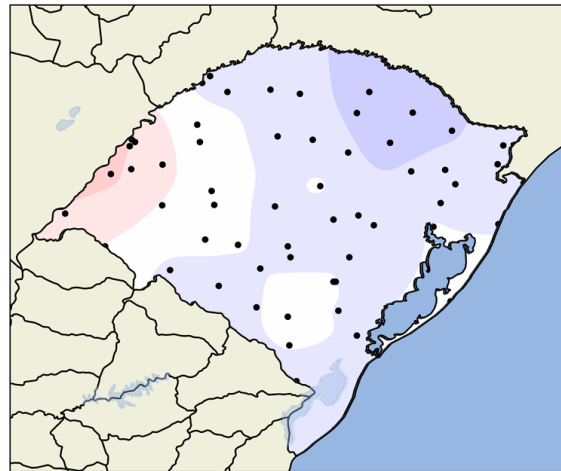
Anomalia - Temperatura mínima - OUTUBRO



Anomalia - Temperatura mínima - Novembro

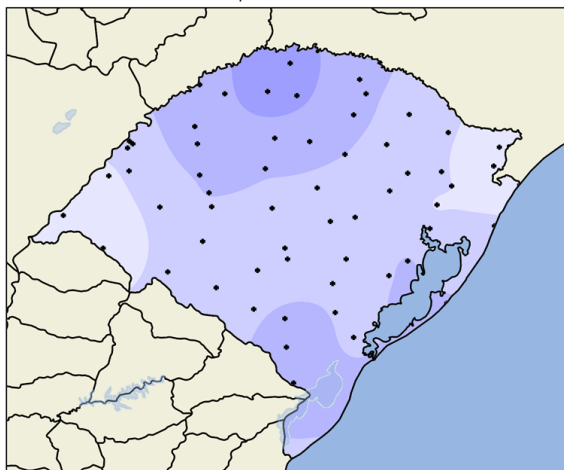


Anomalia - Temperatura mínima - Dezembro

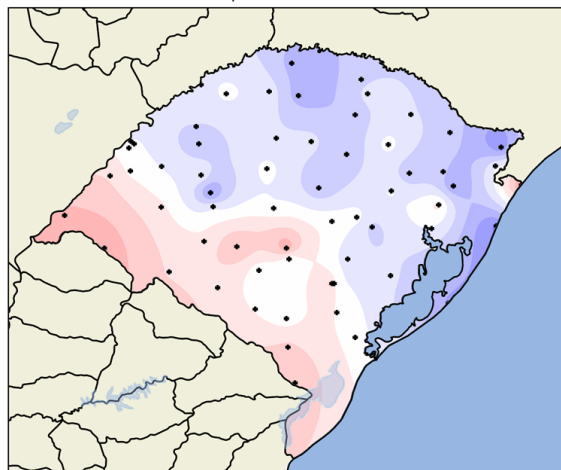


Tmax

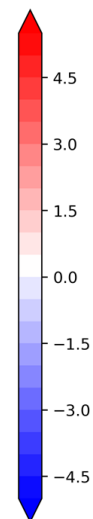
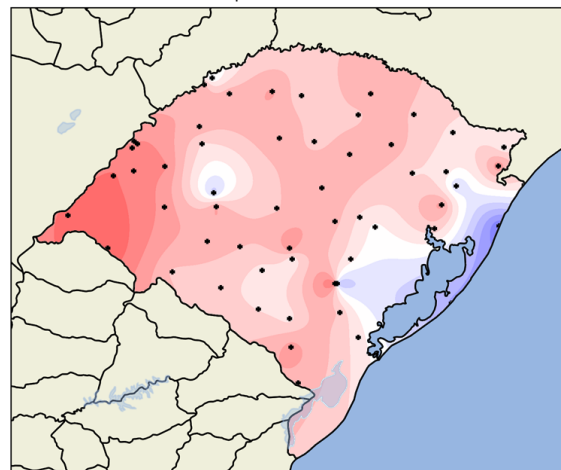
Anomalia - Temperatura máxima - Outubro



Anomalia - Temperatura máxima - Novembro



Anomalia - Temperatura máxima - Dezembro



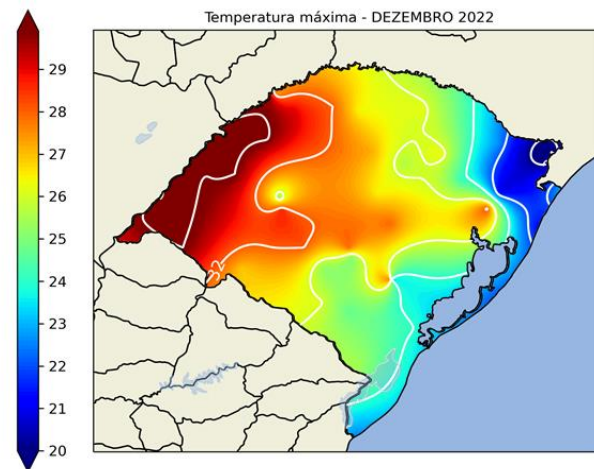
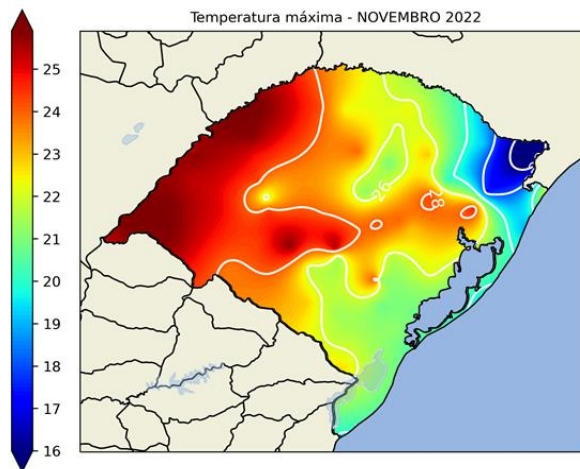
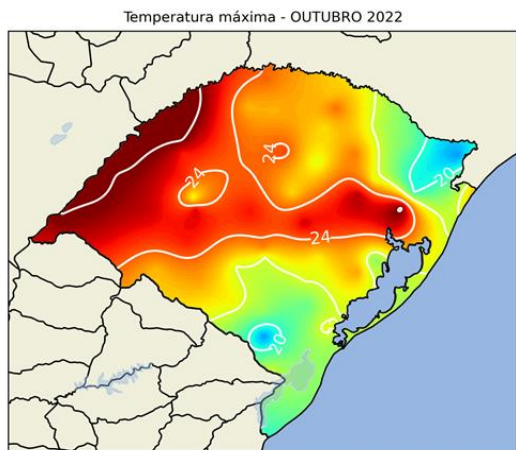
Condições observadas em OND/2022

Setembro

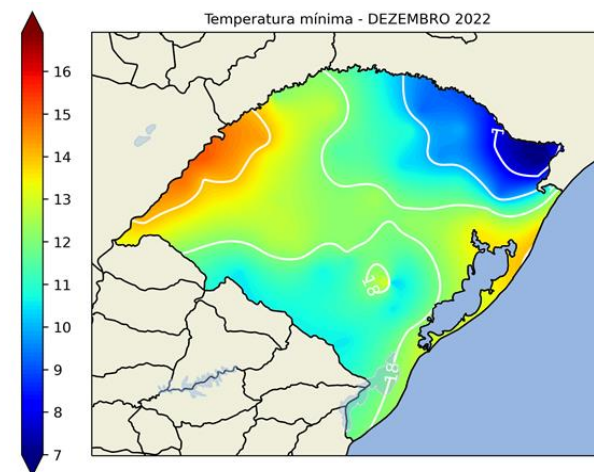
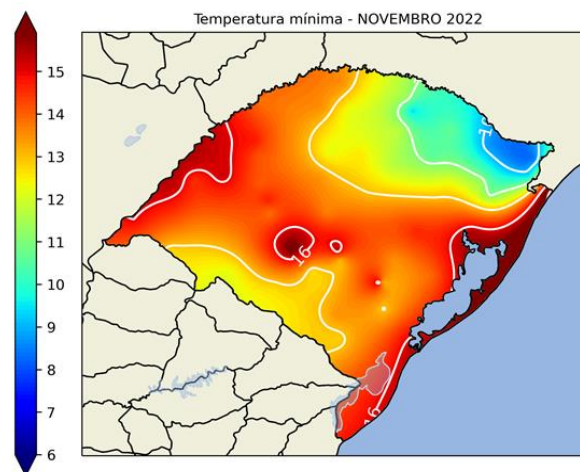
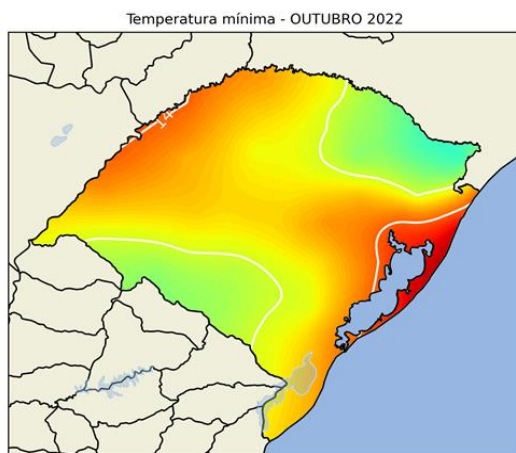
Outubro

Novembro

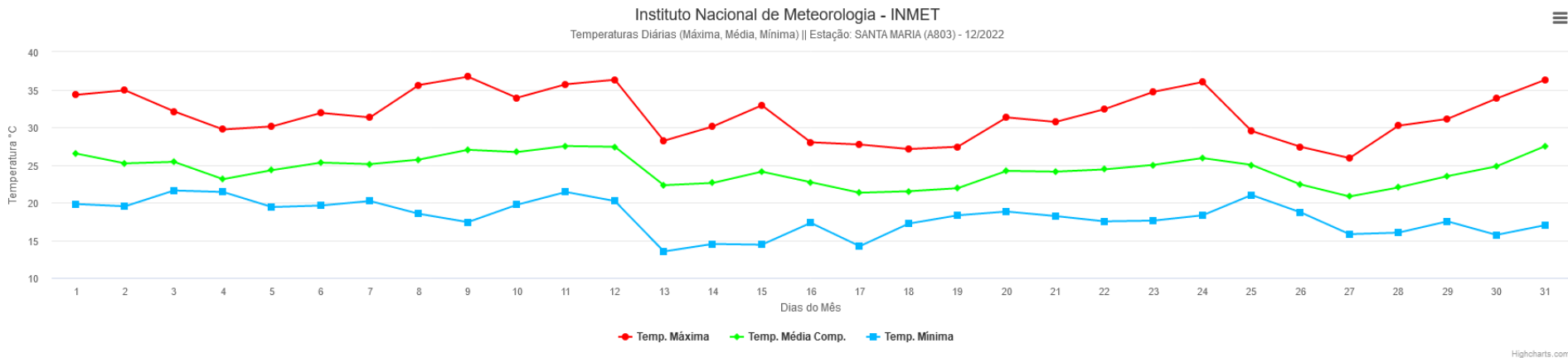
Tmax



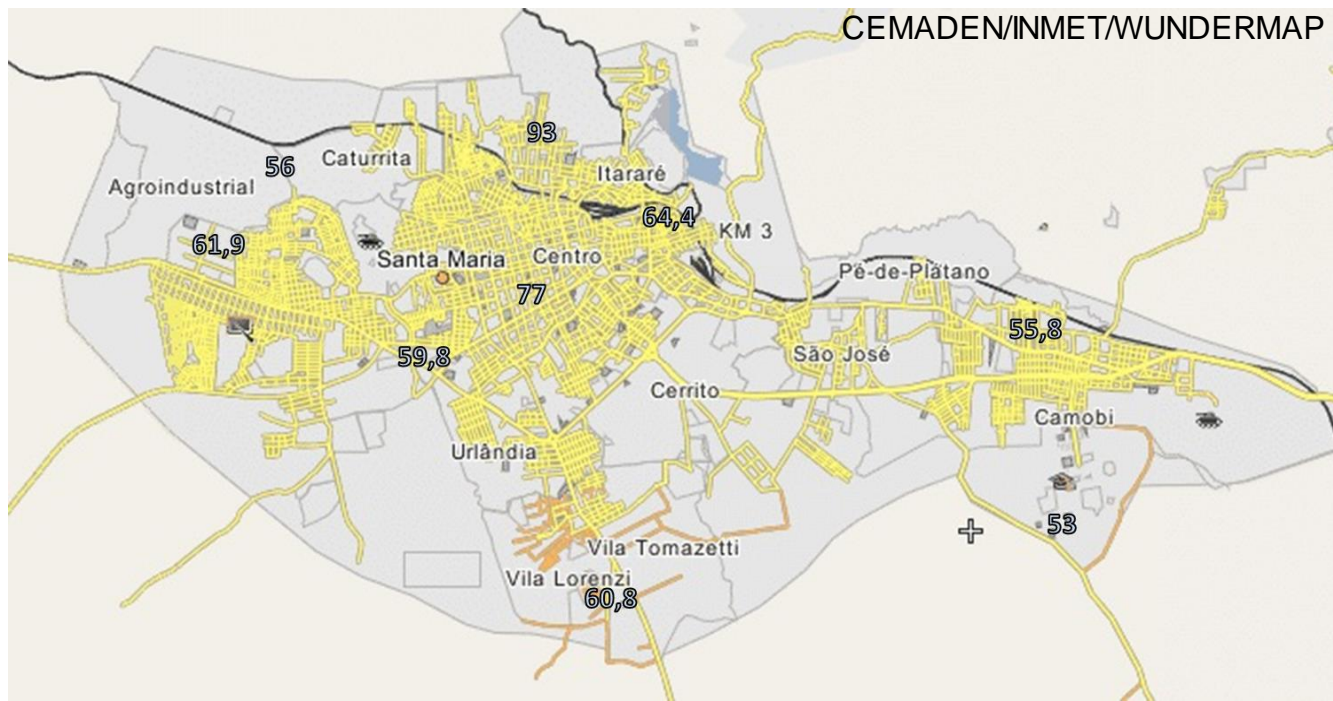
Tmin



Condições observadas em Dez/2022



Precipitação mensal em Dezembro - Santa Maria



Condições observadas em Dez/2022

Impactos relevantes da pouca precipitação no estado:

Estiagem já motivou 44 municípios a decretarem situação de emergência no RS

Além dos prejuízos na agricultura e pecuária provocados pela falta de chuvas, há cidades que estão com problemas de desabastecimento de água.

Por Augustine Timm, RBS TV Pelotas

05/01/2023 19h36 · Atualizado há 14 horas



Incêndio queimou quase 12 mil hectares da Estação Ecológica do Taim, o equivalente a 36% do total da reserva

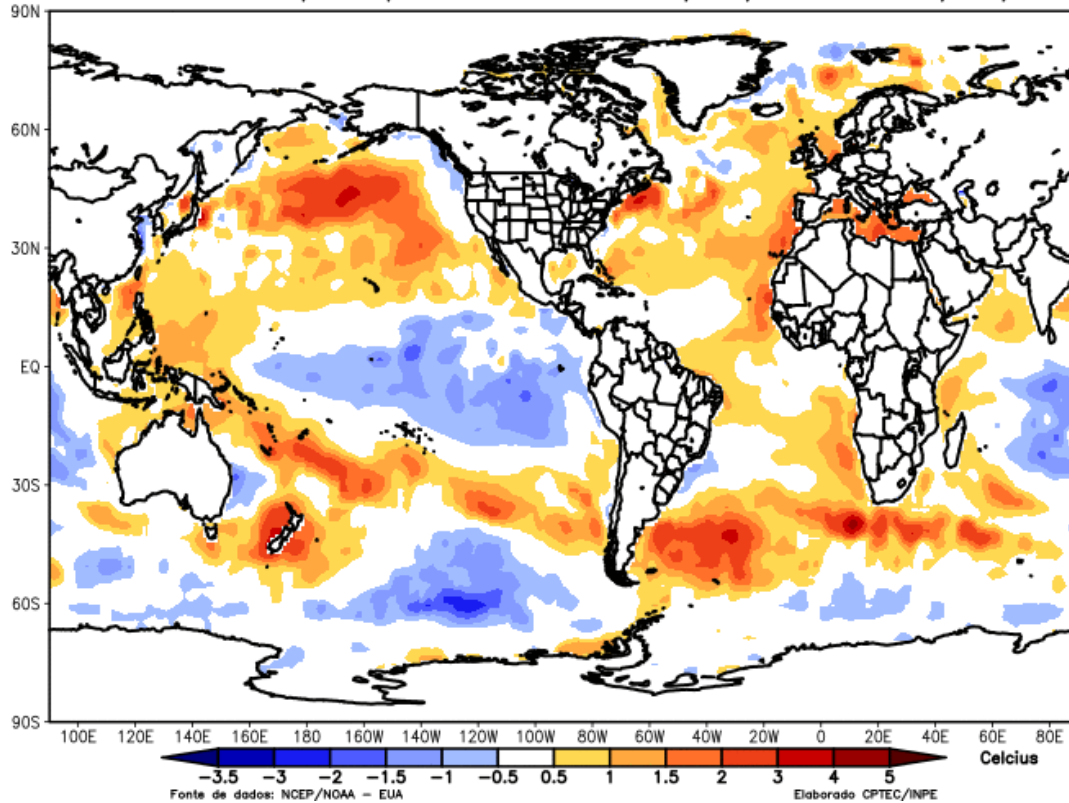
Área fica entre os municípios de Rio Grande e Santa Vitória do Palmar

19/12/2022 - 14h44min
Atualizada em 19/12/2022 - 18h04min

COMPARTILHE

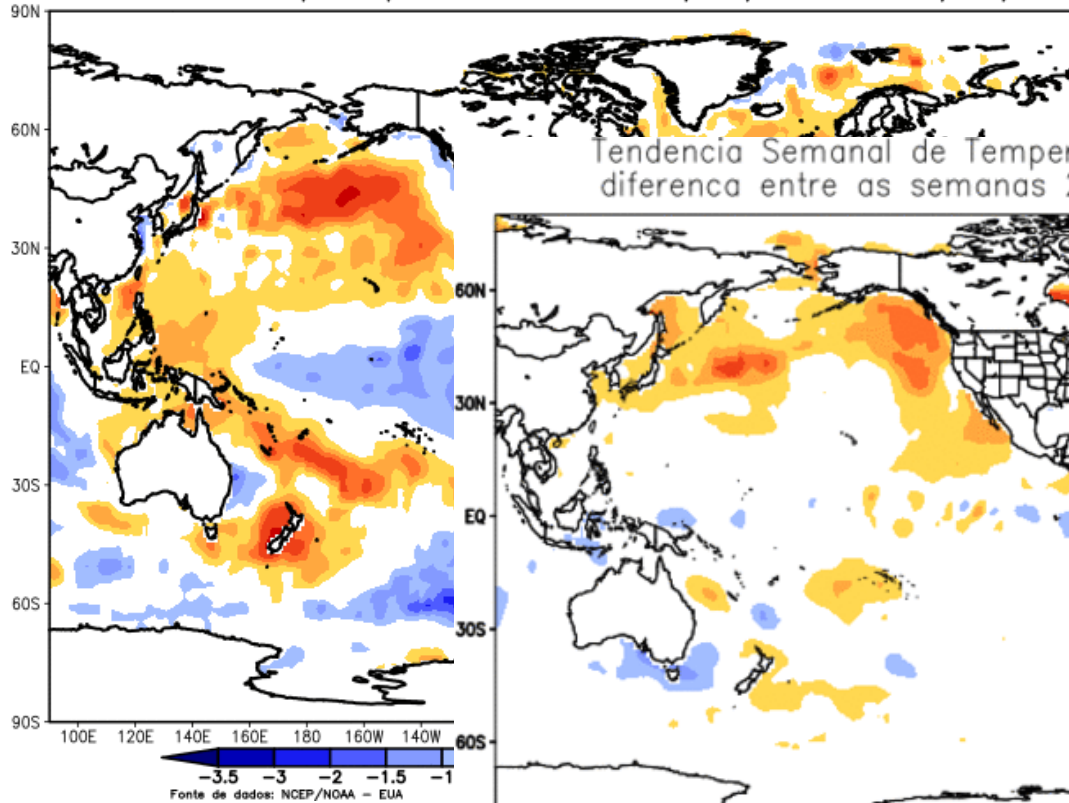
Condições oceânicas

Anomalia de Temp. Superfície do Mar 25/12/2022 a 31/12/2022

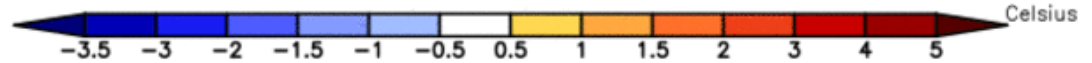
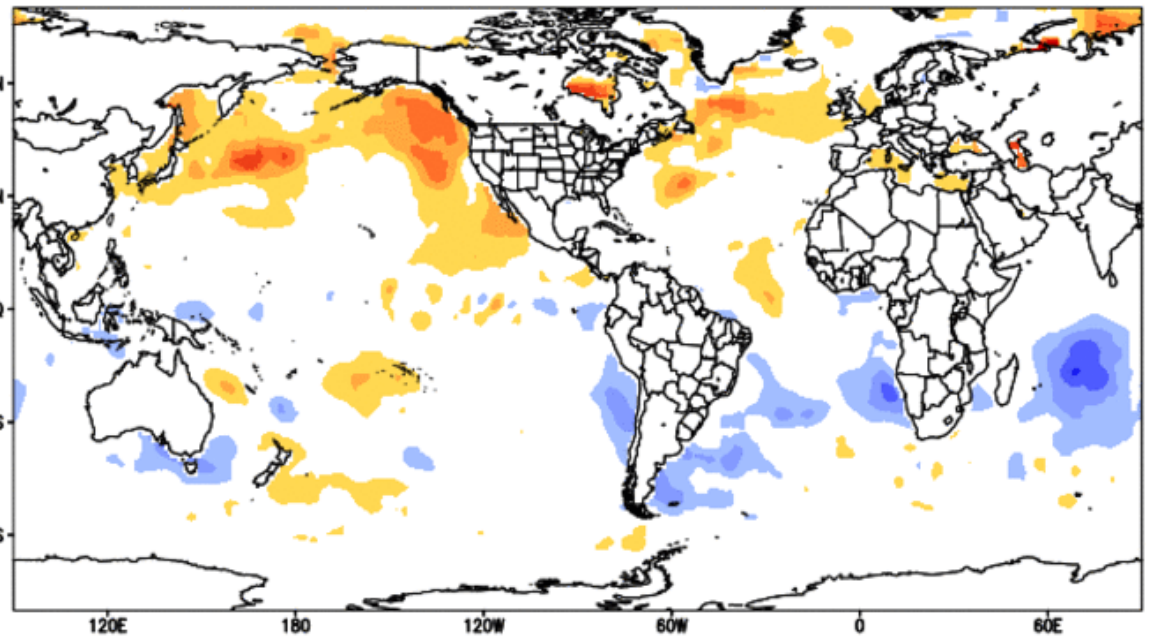


Condições oceânicas

Anomalia de Temp. Superfície do Mar 25/12/2022 a 31/12/2022



Tendência Semanal de Temperatura da Superfície do Mar
diferença entre as semanas 21/12/2022 e 28/12/2022

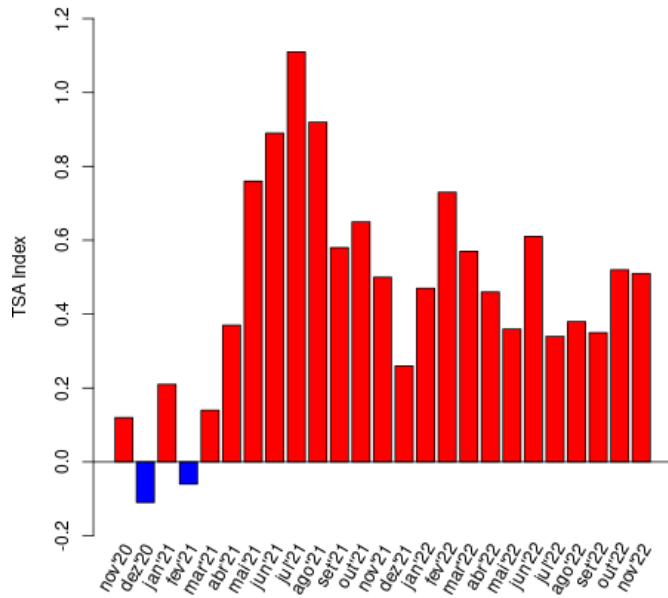


Fonte de dados: NCEP/NOAA - EUA

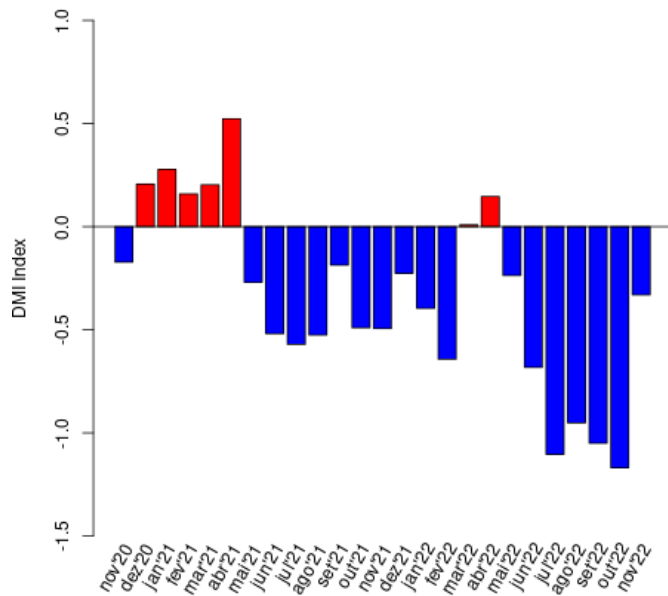
Elaboracao: CPTEC/INPE

Índices oceânicos

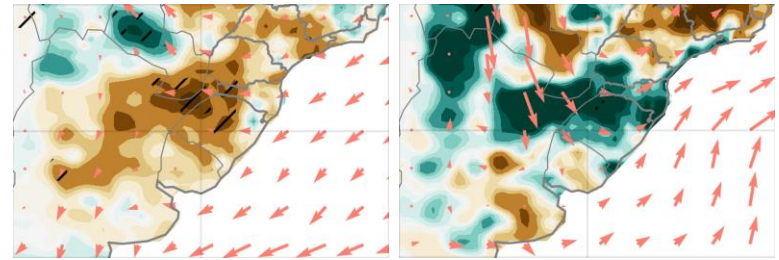
Índice Atlântico Tropical Sul



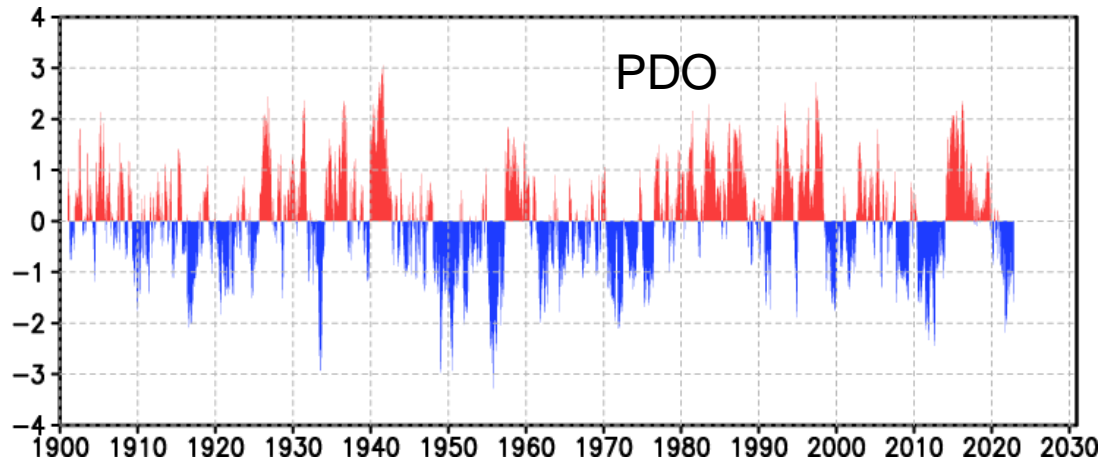
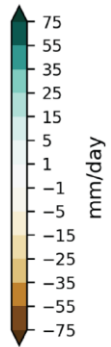
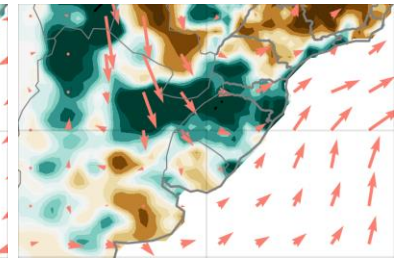
Índice Modo Dipolo



Fase negativa

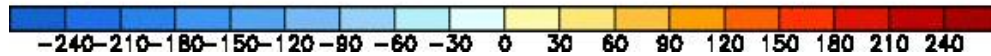
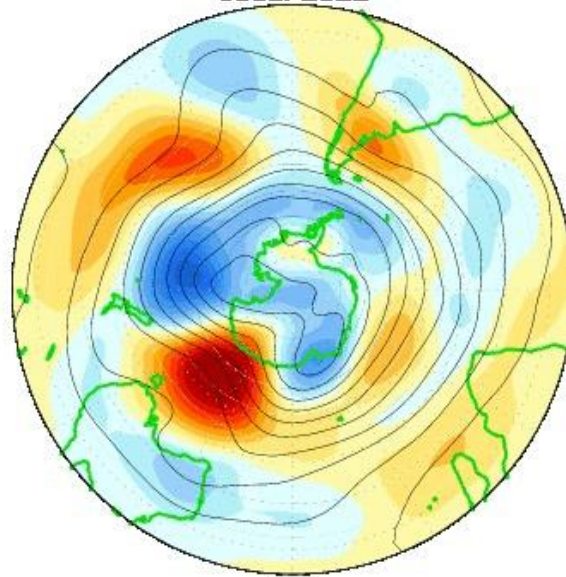


Fase positiva

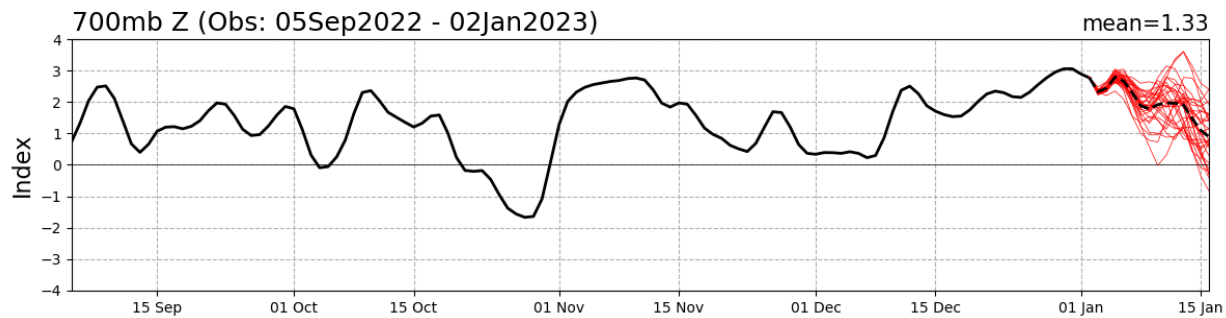


Índices atmosférico (AAO)

CDAS 500-hPa HT Anoms (5d rm)
05SEP2022

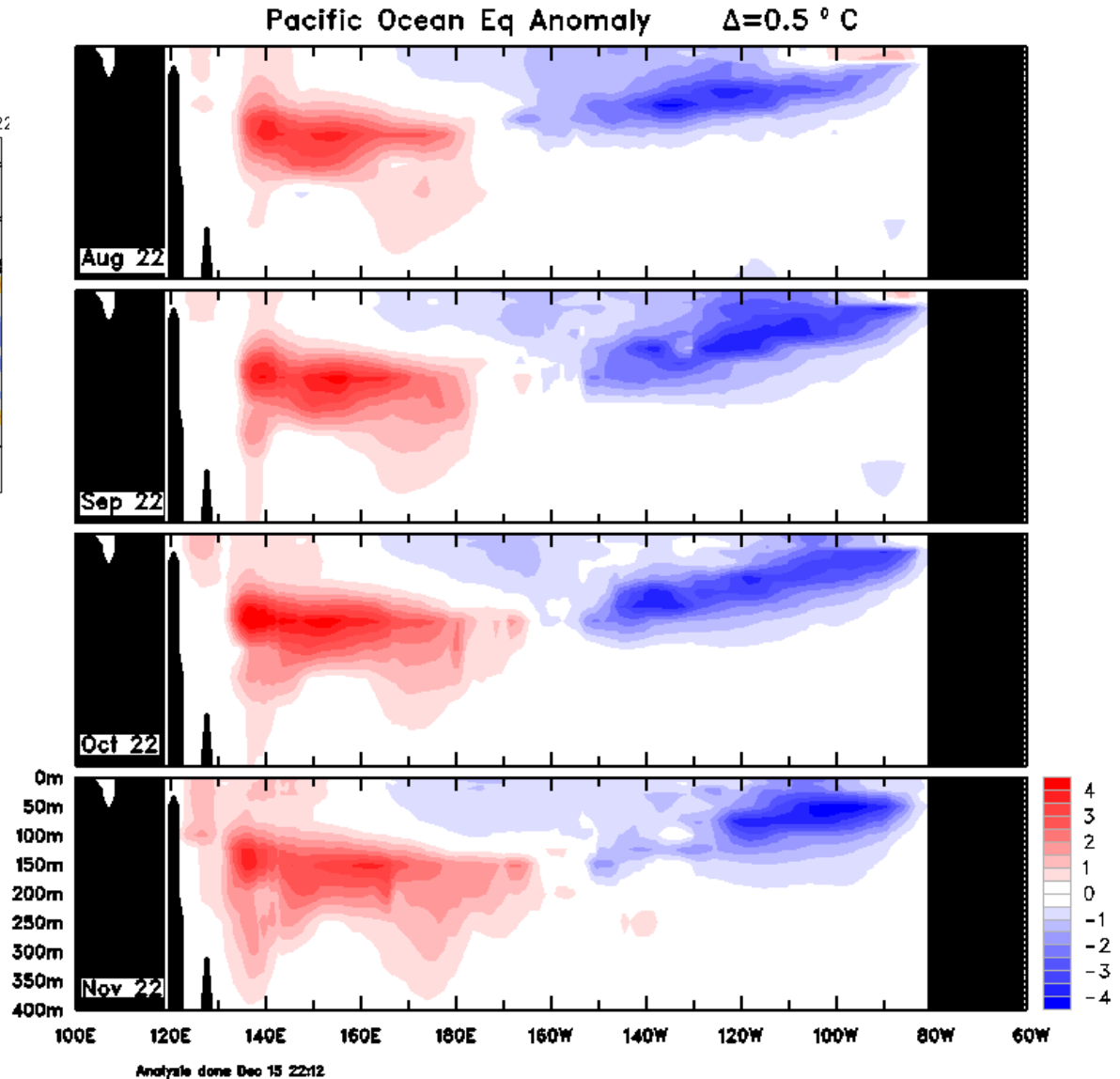
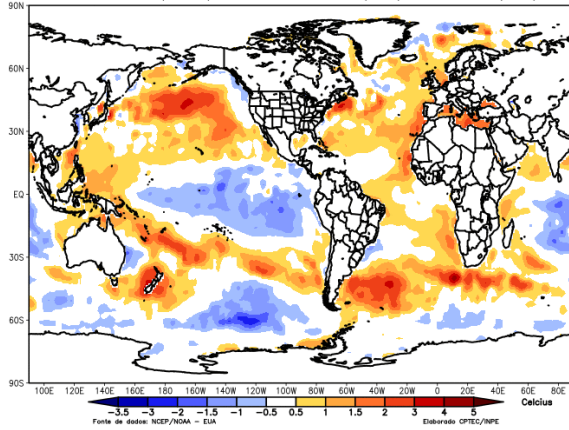


AAO Index: Observed & GEFS Forecasts



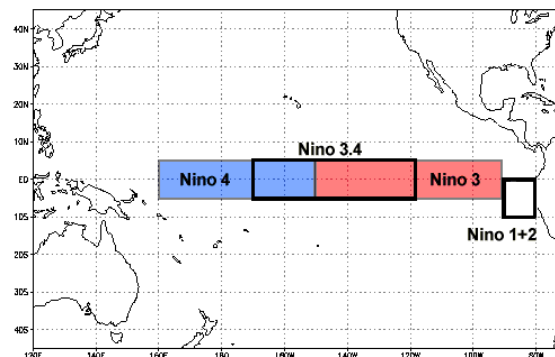
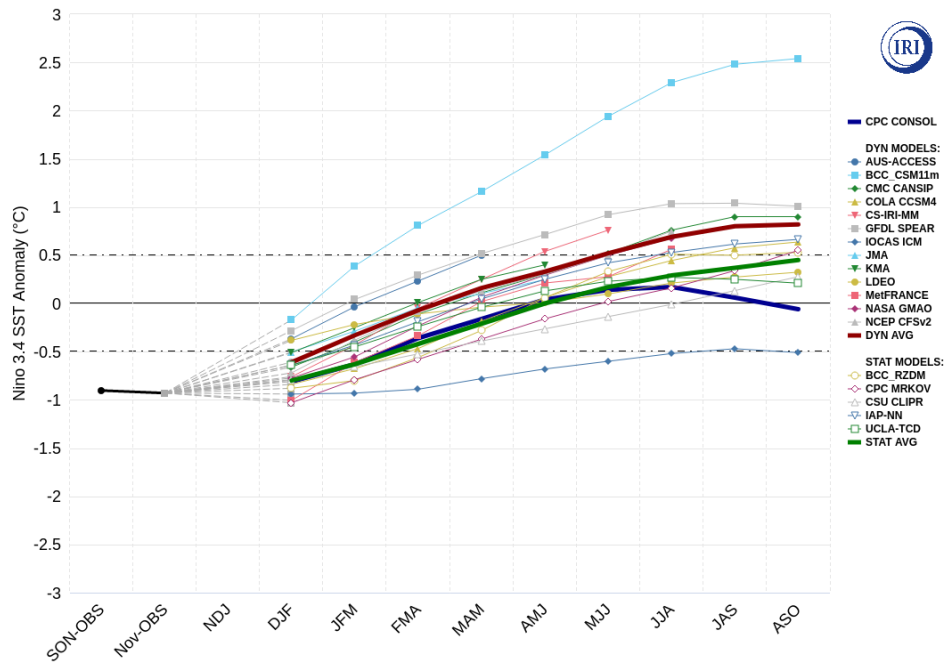
Condições oceânicas

Anomalia de Temp. Superfície do Mar 25/12/2022 a 31/12/2022



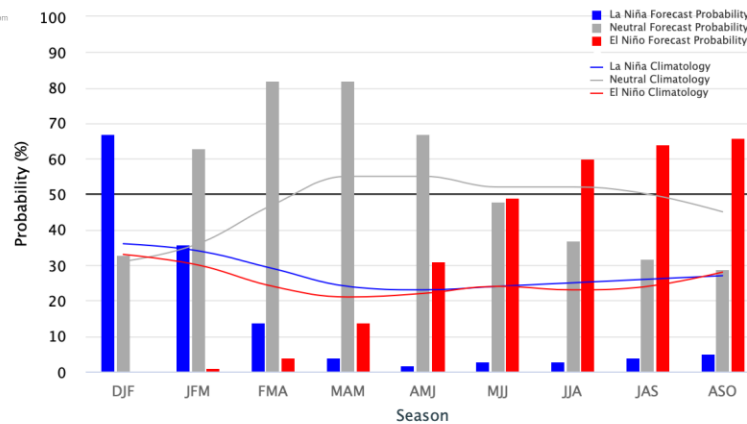
Previsões do ENOS

Model Predictions of ENSO from Dec 2022



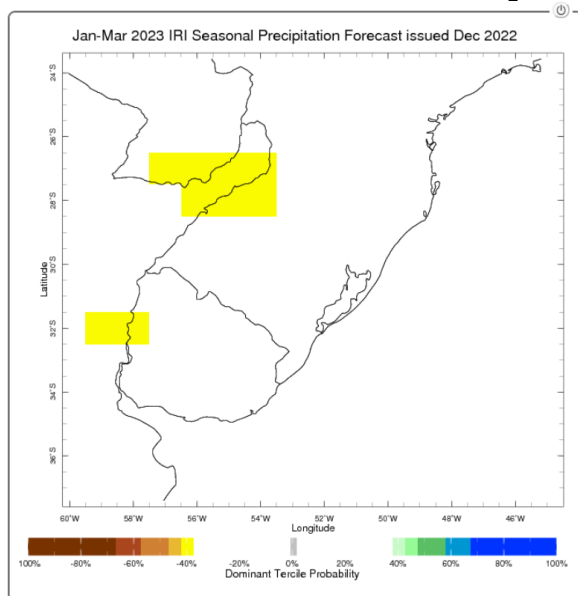
Mid-December 2022 IRI Model-Based Probabilistic ENSO Forecasts

ENSO state based on NINO3.4 SST Anomaly
Neutral ENSO: -0.5°C to 0.5°C

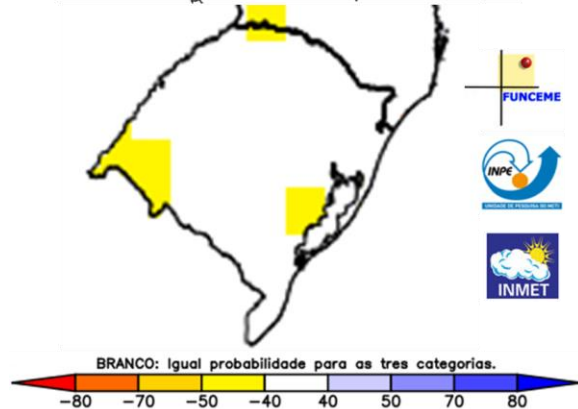


Previsões sazonais

Precipitação (probabilística)



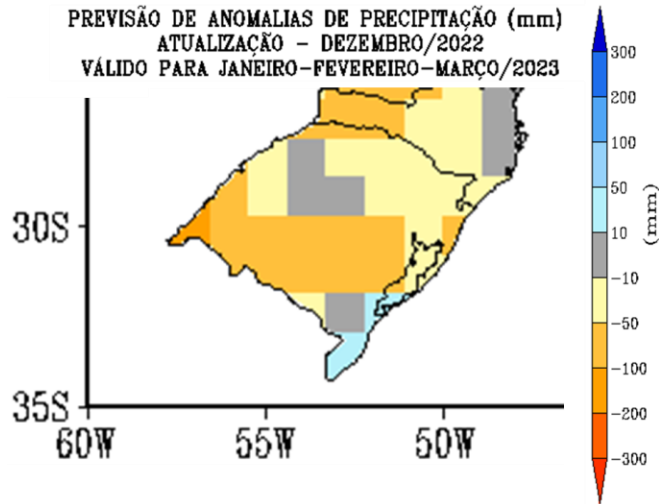
Multi-modelo CPTEC/INMET/FUNCEME
Probab. tercil mais provavel: Precip. (%)
Produzida: Dez 2022 Valida para JFM 2023



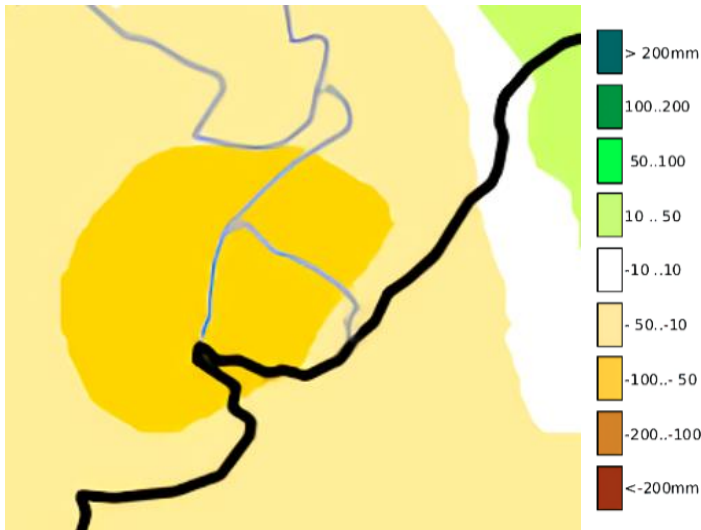
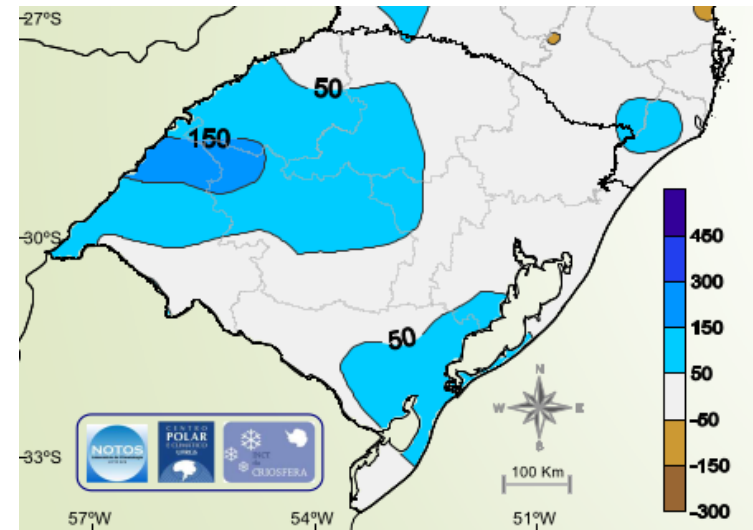
C3S

Previsões sazonais

Precipitação (mm)

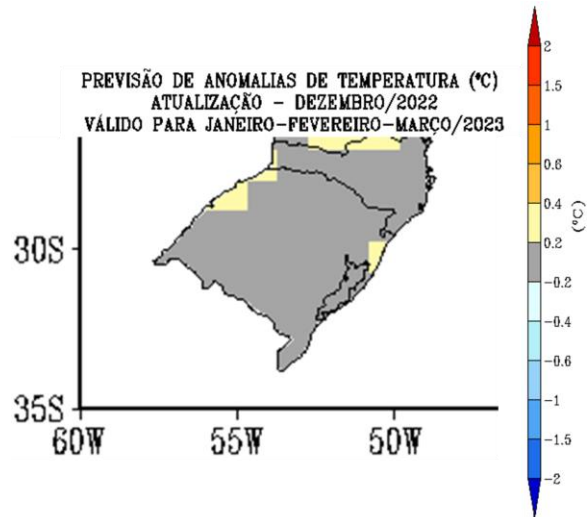


MoReClima-SUL

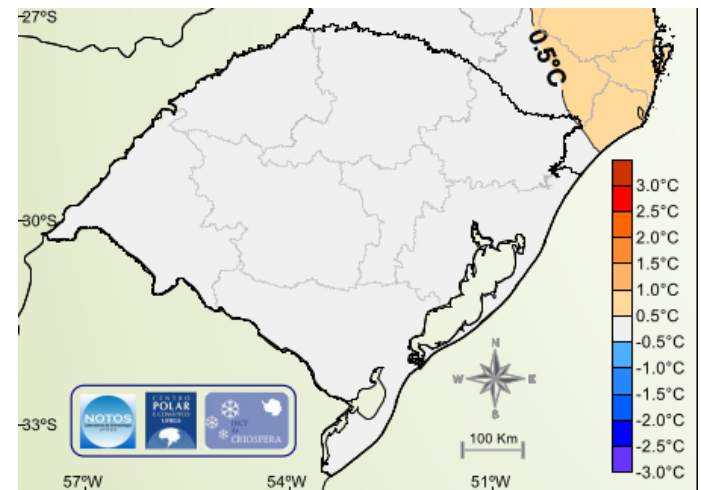


Previsões sazonais

Temperatura (°C)



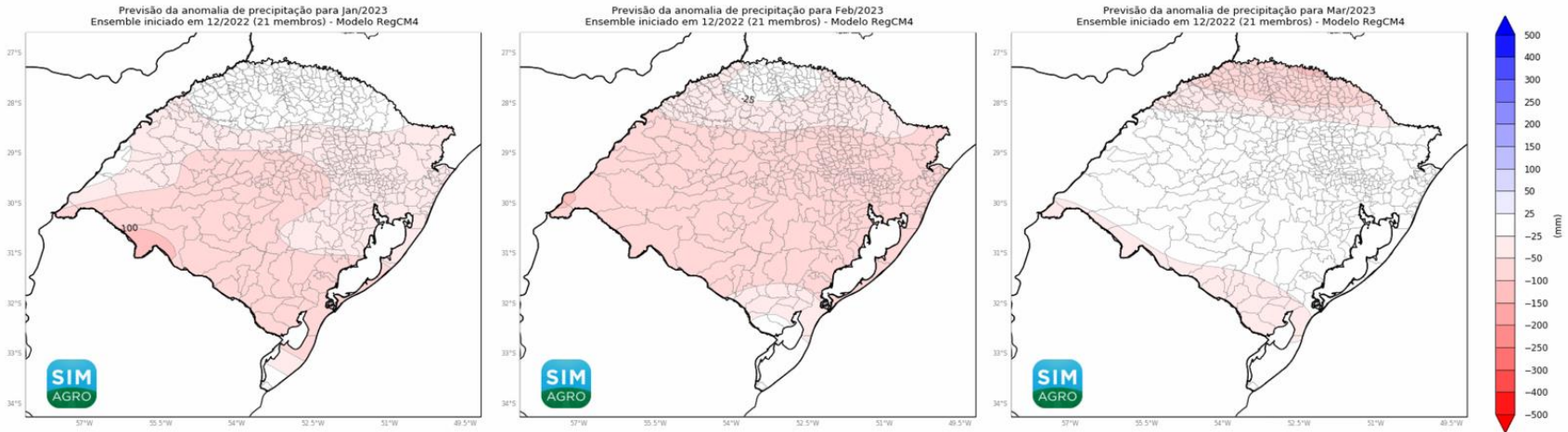
MoReClima-SUL



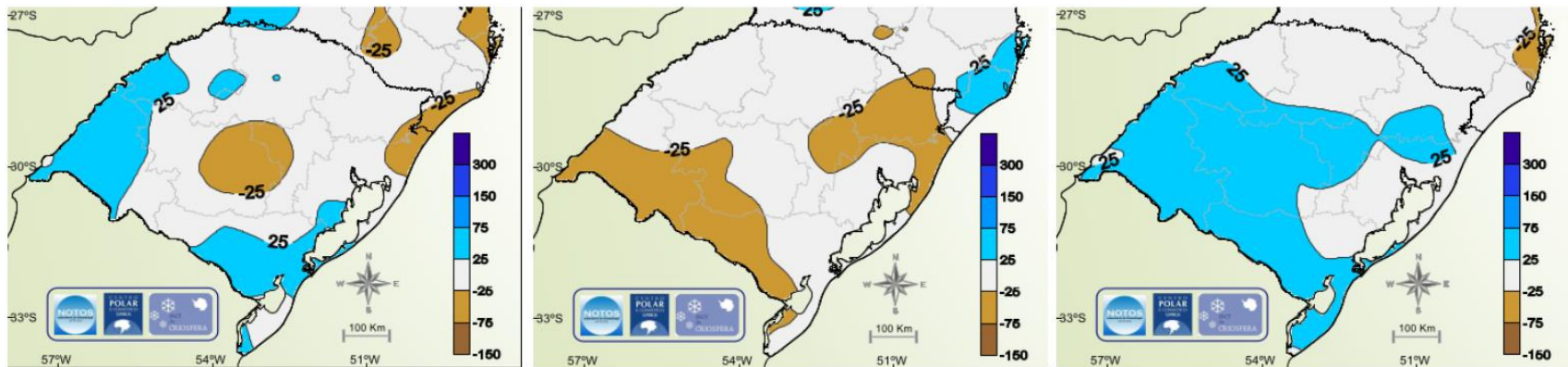
Previsões mensais

Precipitação (mm)

RegCM4

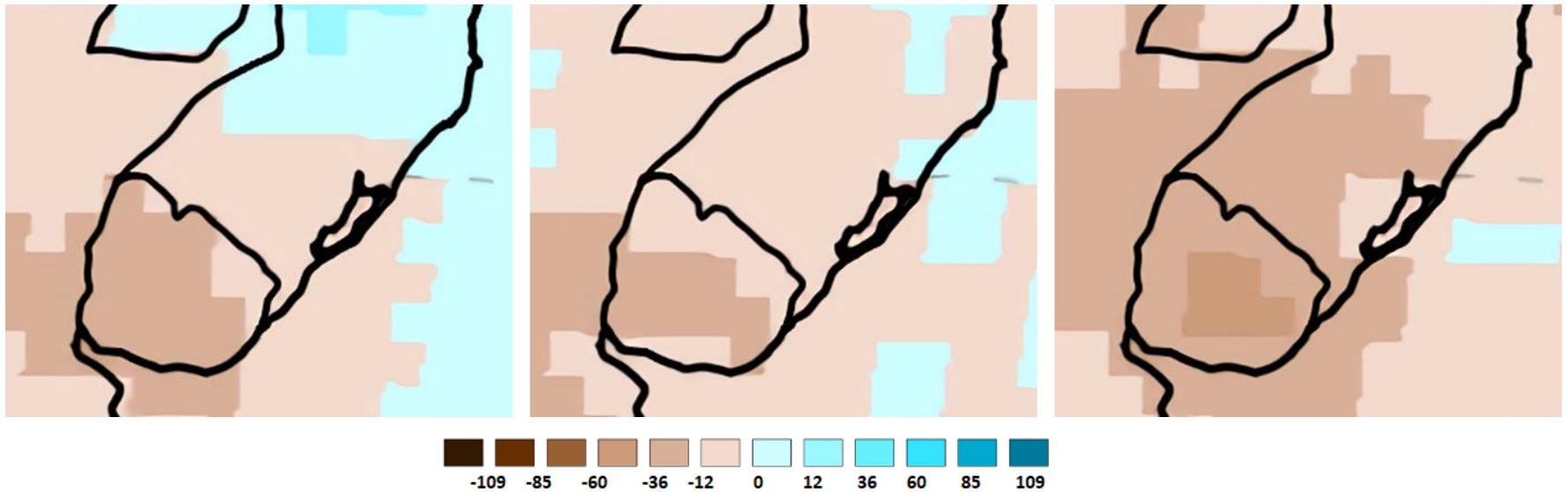


MoReClima-SUL



Previsões mensais- precipitação (mm)

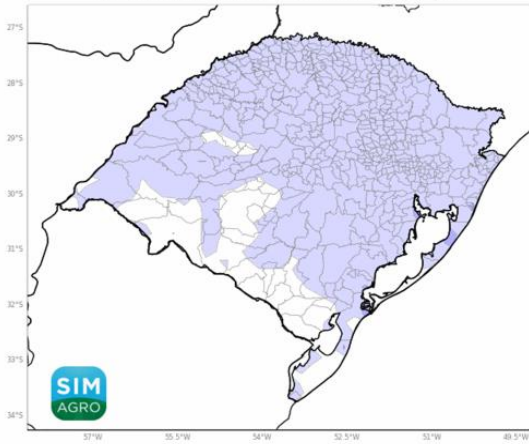
APCC



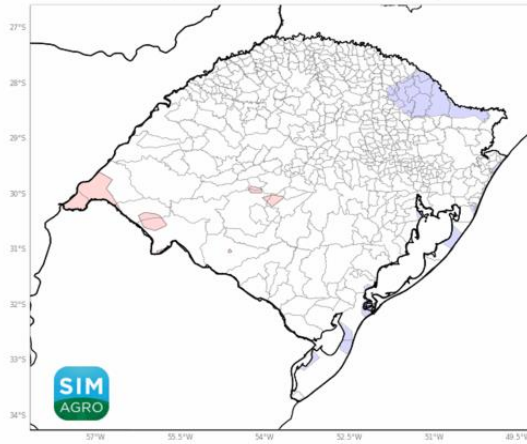
Previsões mensais – Temperatura (°C)

RegCM4

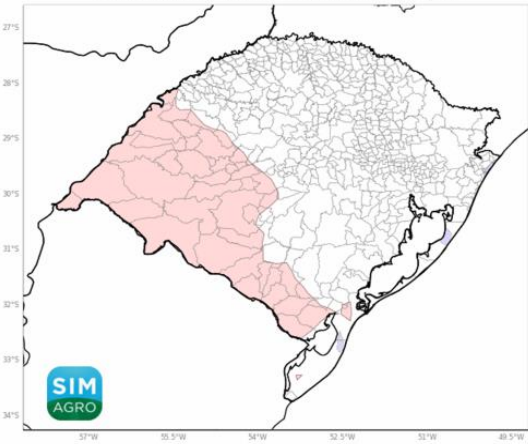
Previsão da anomalia de temperatura média do ar a 2m para Jan/2023
Ensemble iniciado em 12/2022 (26 membros) - Modelo RegCM4



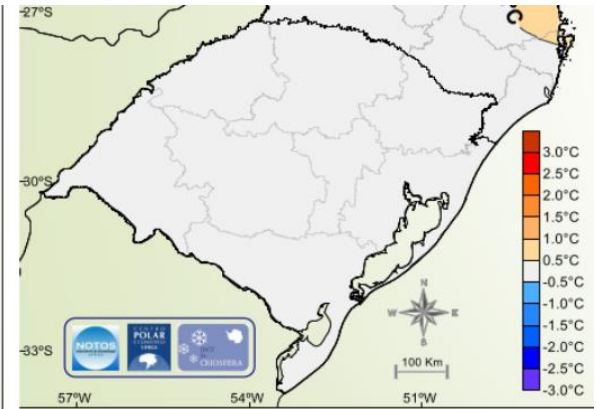
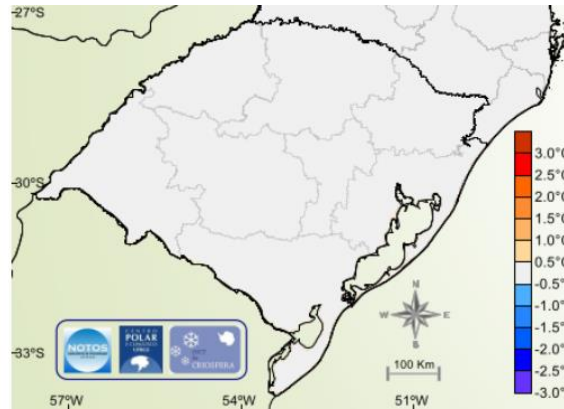
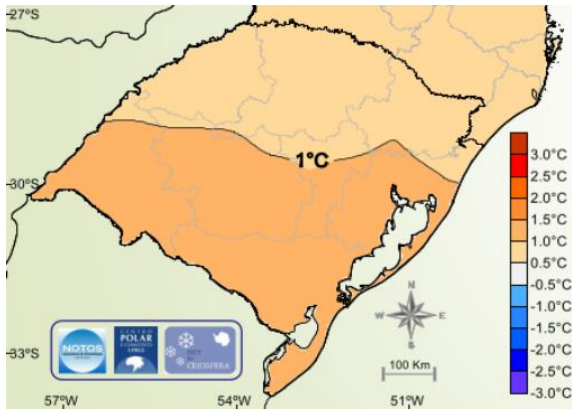
Previsão da anomalia de temperatura média do ar a 2m para Feb/2023
Ensemble iniciado em 12/2022 (26 membros) - Modelo RegCM4



Previsão da anomalia de temperatura média do ar a 2m para Mar/2023
Ensemble iniciado em 12/2022 (26 membros) - Modelo RegCM4

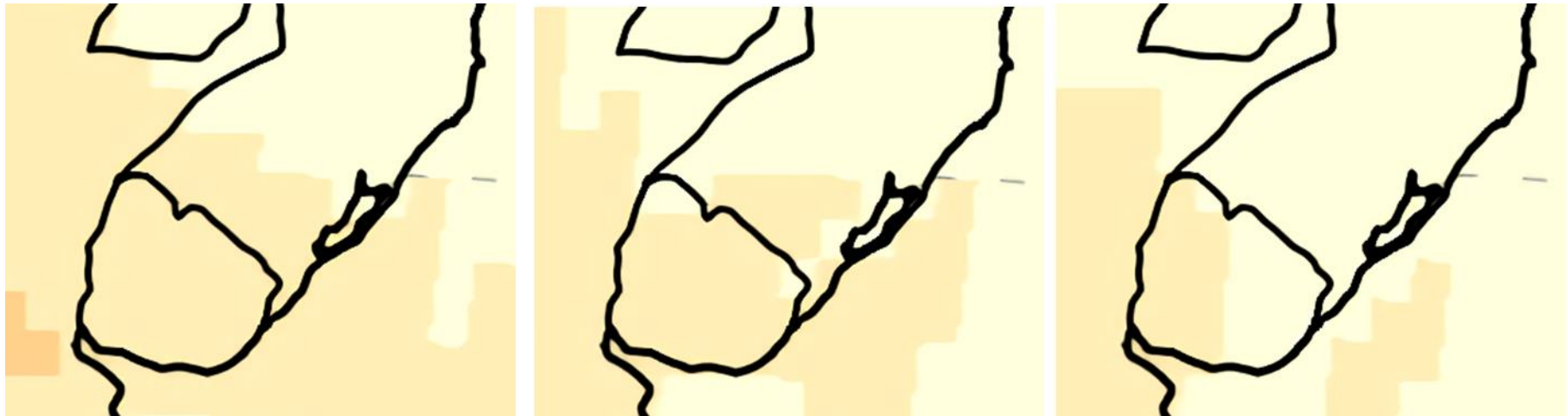


MoReClima-SUL



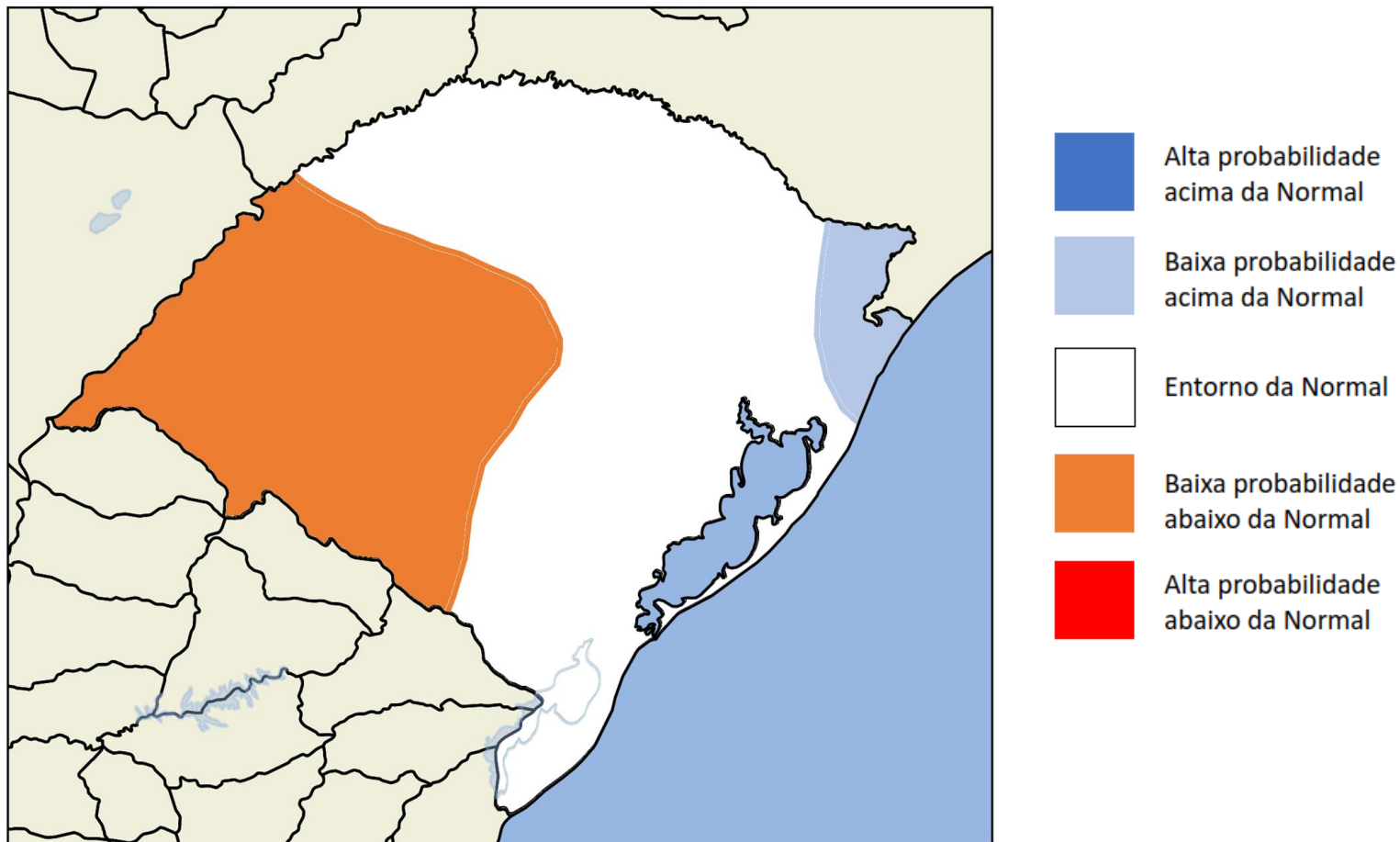
Previsões mensais – Temperatura (°C)

APCC



Previsão por consenso

Precipitação (JFM-2023)



Previsão por consenso

Temperatura (JFM-2023)

