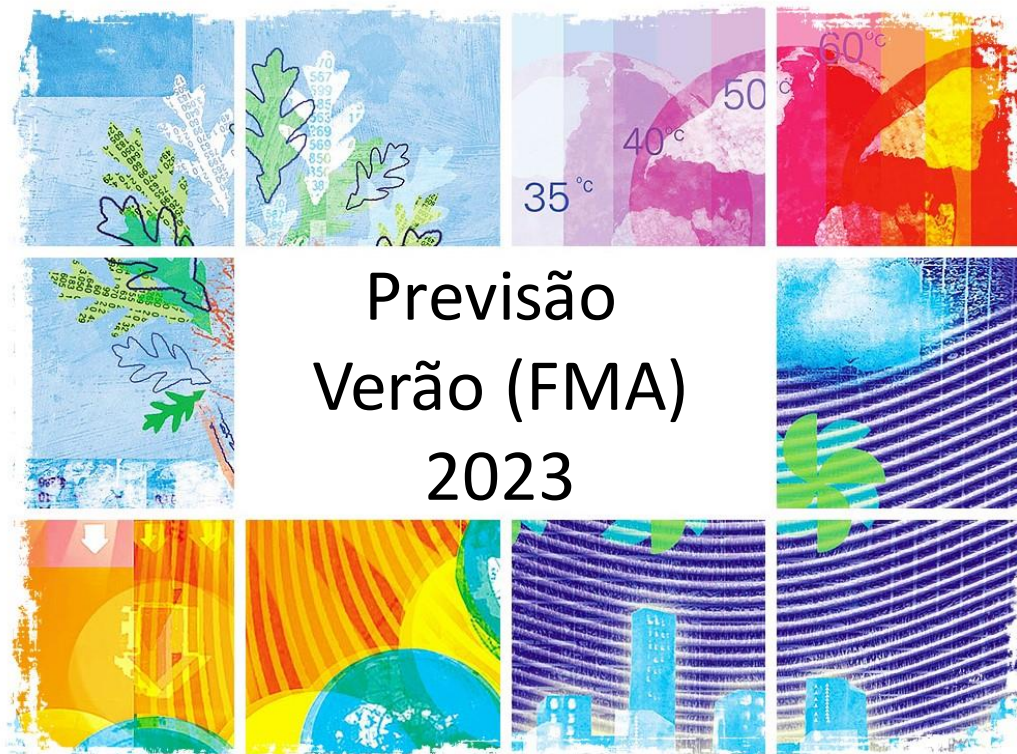


VI Reunião Climática Mensal

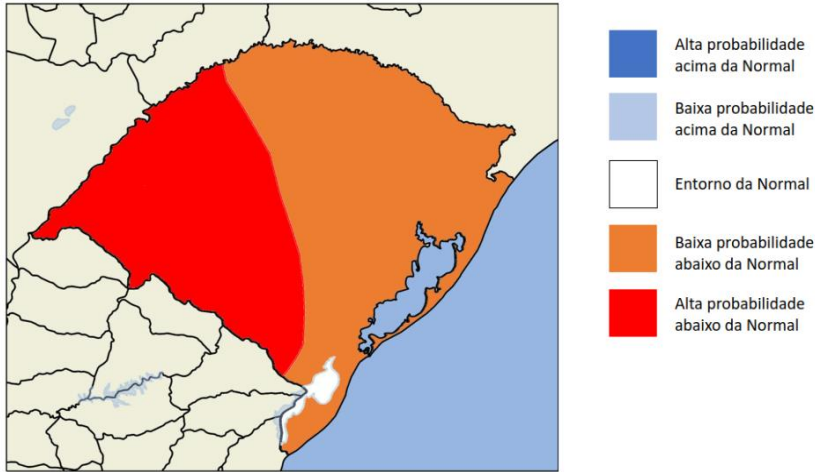


Verificação da previsão para NDJ

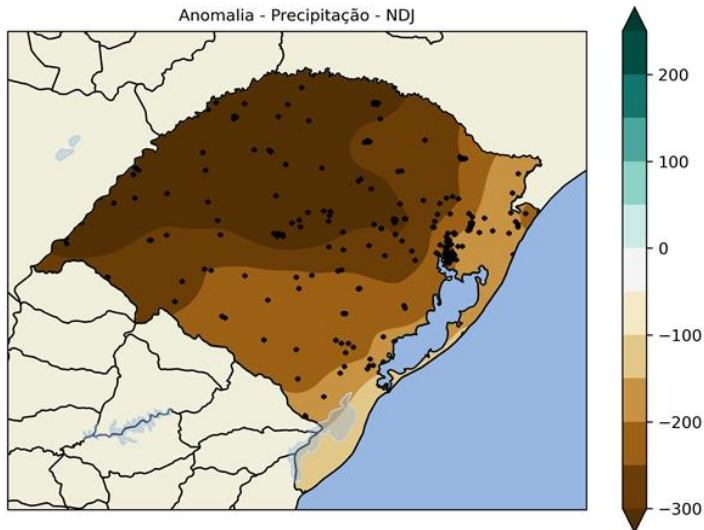
Previsão por consenso realizada em Outubro de 2022

Precipitação

Previsto:



Observado:

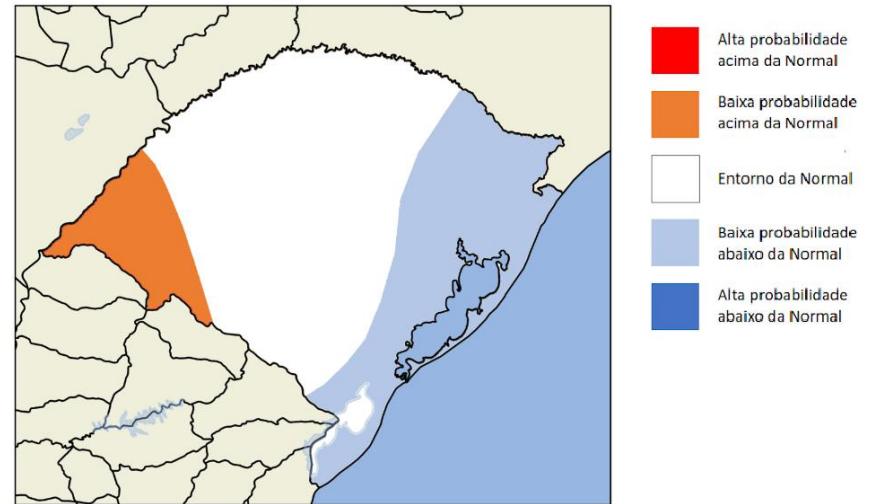


Verificação da previsão para NDJ

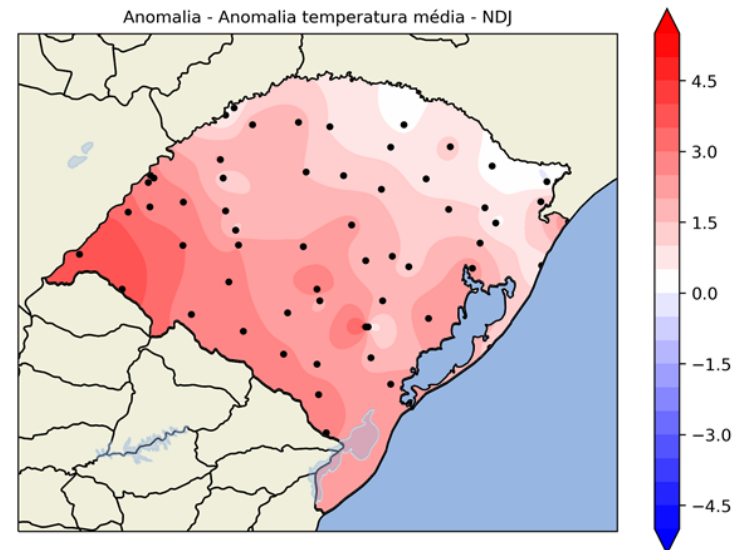
Previsão por consenso realizada em Setembro de 2022

Temperatura do ar

Previsto:



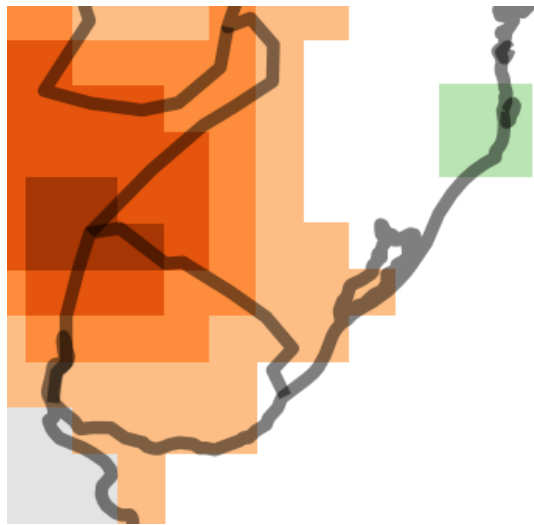
Observado:



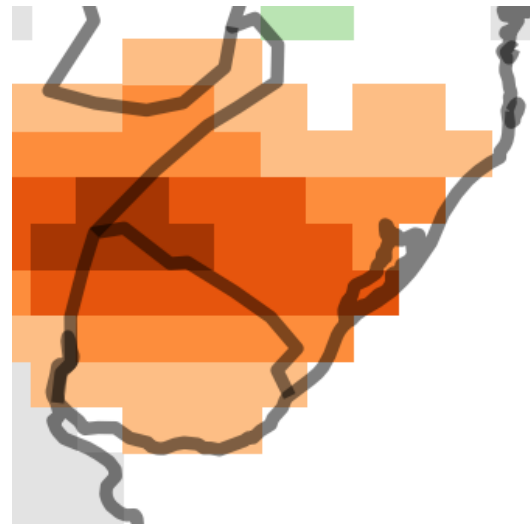
Verificação dos modelos por tempo de antecedência

Anomalia de Precipitação sazonal IRI-NMME (NDJ/2023)

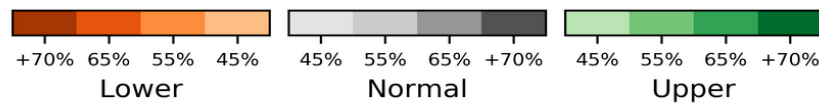
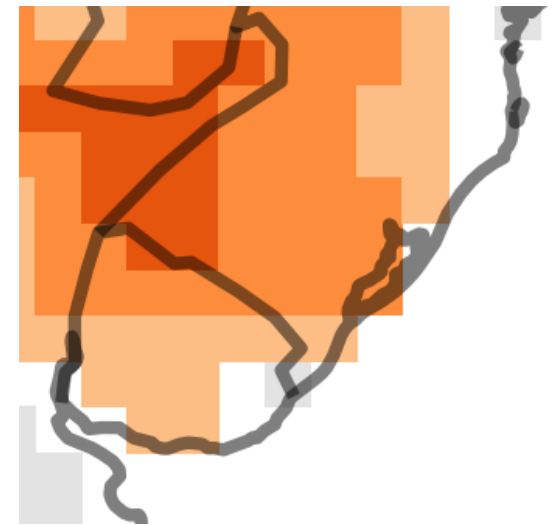
Iniciado em Agosto/2022



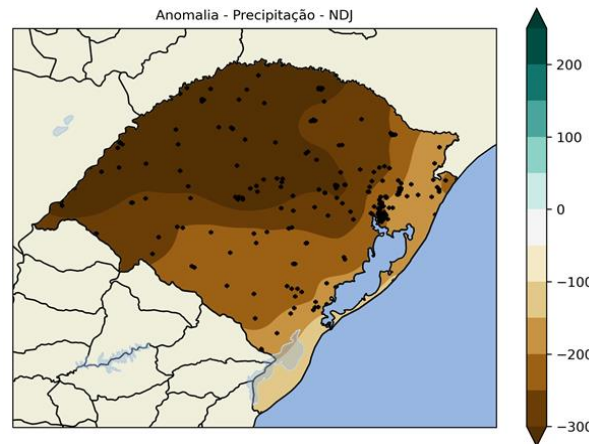
Iniciado em Setembro/2022



Iniciado em Outubro/2022



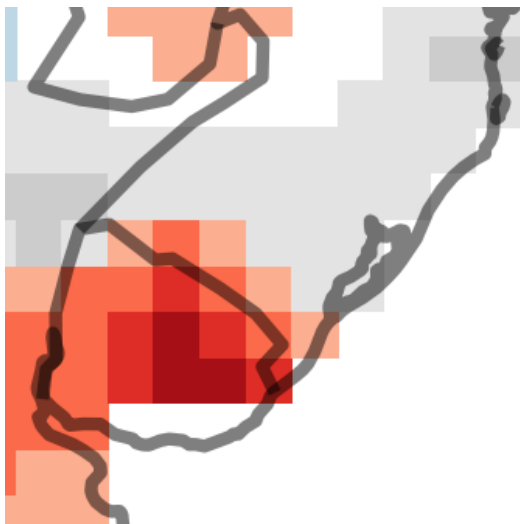
Observado:



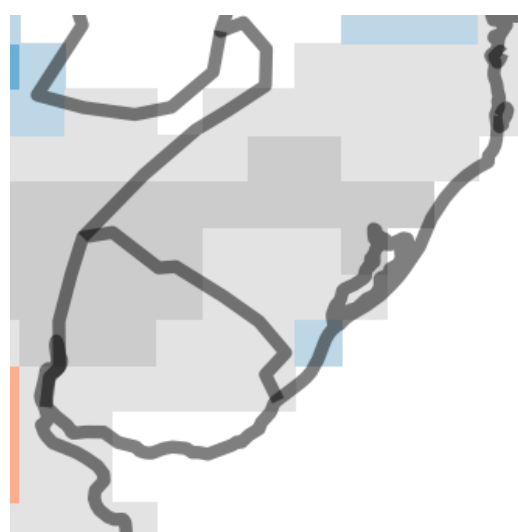
Verificação dos modelos por tempo de antecedência

Anomalia de Temperatura sazonal IRI-NMME (NDJ/2022)

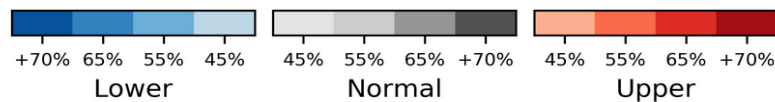
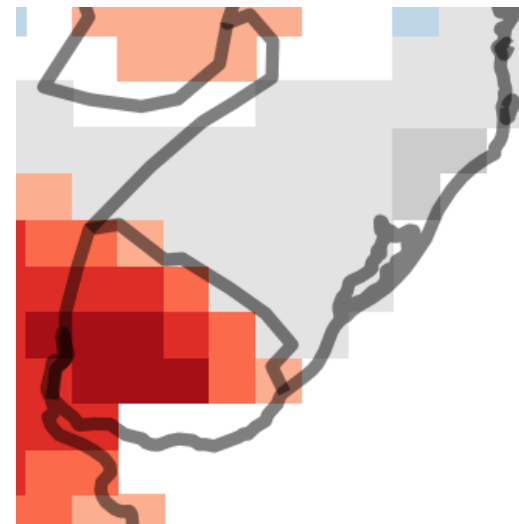
Iniciado em Agosto/2022



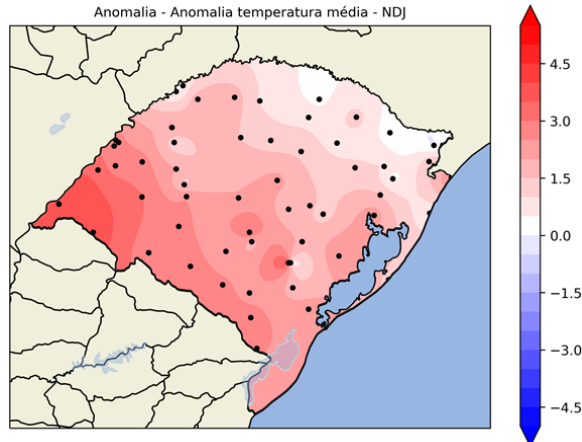
Iniciado em Setembro/2022



Iniciado em Outubro/2022



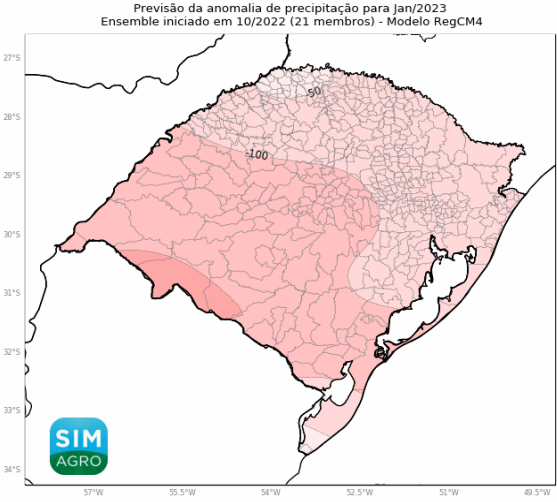
Observado:



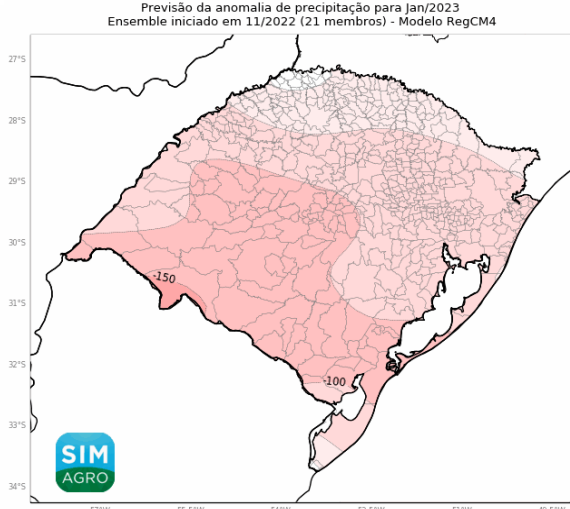
Verificação dos modelos por tempo de antecedência

Anomalia de Precipitação RegCM4 do SIMAGRO (Janeiro/2023)

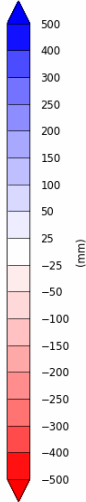
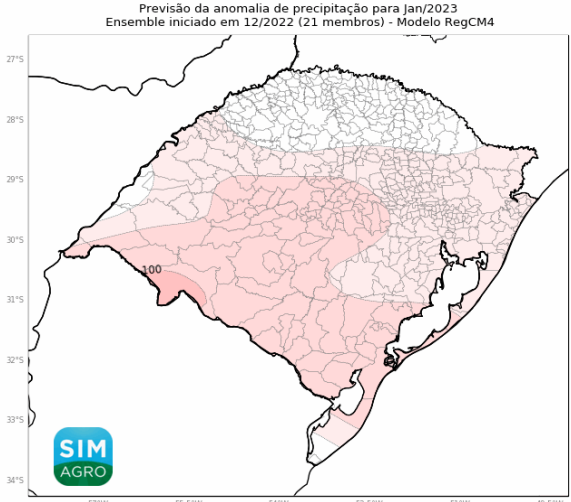
Iniciado em Outubro/2022



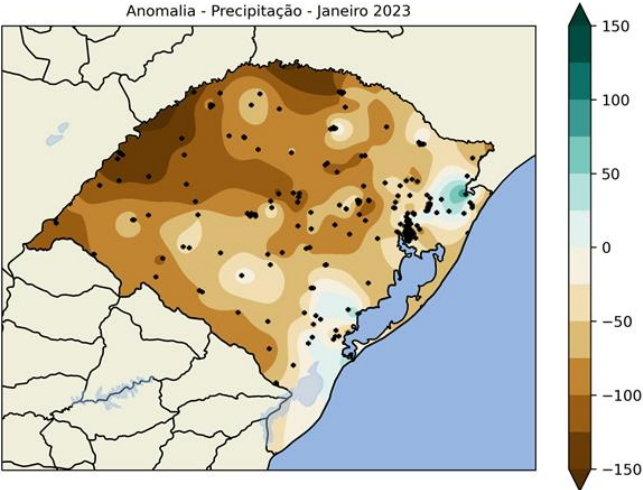
Iniciado em Novembro/2022



Iniciado em Dezembro/2022



Observado:

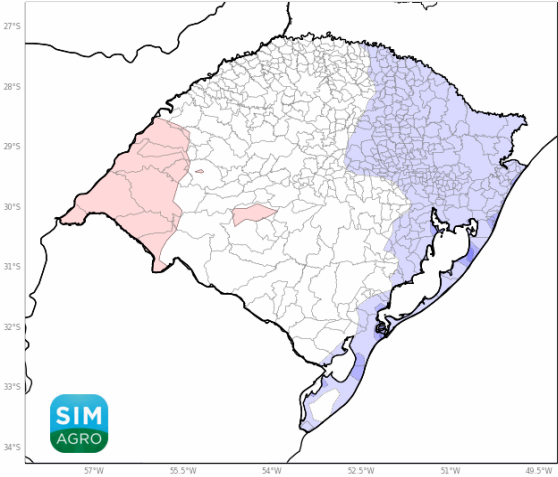


Verificação dos modelos por tempo de antecedência

Anomalia de Temperatura RegCM4 do SIMAGRO (Janeiro/2023)

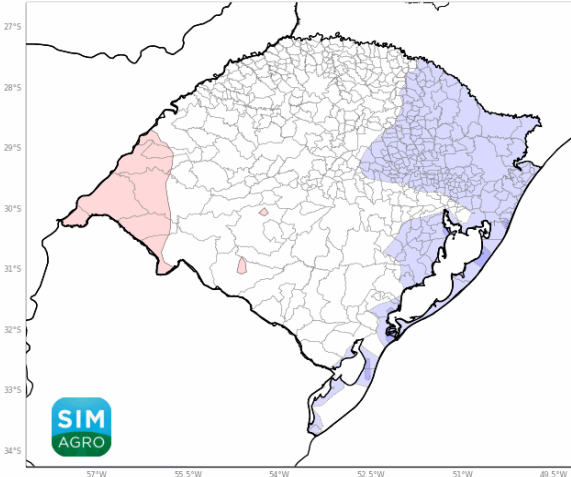
Iniciado em Outubro/2022

Previsão da anomalia de temperatura média do ar a 2m para Jan/2023
Ensemble iniciado em 10/2022 (26 membros) - Modelo RegCM4



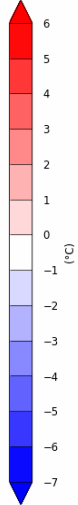
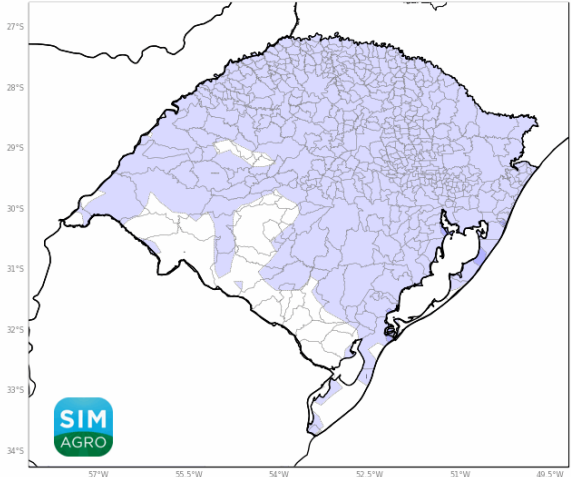
Iniciado em Novembro/2022

Previsão da anomalia de temperatura média do ar a 2m para Jan/2023
Ensemble iniciado em 11/2022 (26 membros) - Modelo RegCM4

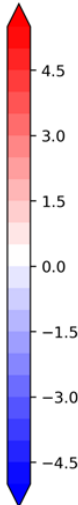
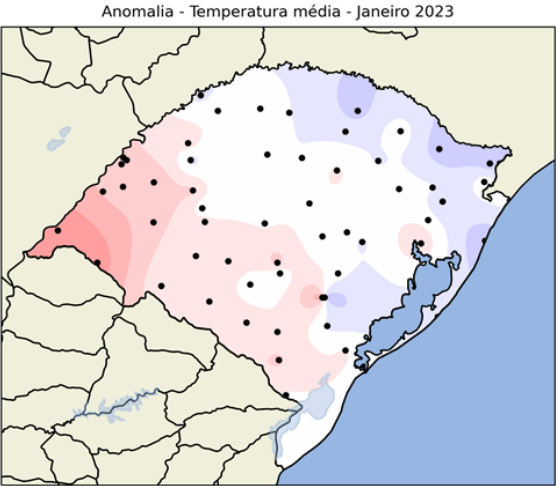


Iniciado em Dezembro/2022

Previsão da anomalia de temperatura média do ar a 2m para Jan/2023
Ensemble iniciado em 12/2022 (26 membros) - Modelo RegCM4



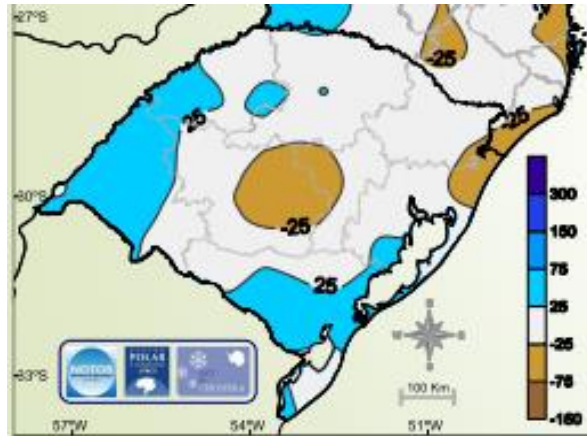
Observado:



Verificação dos modelos por tempo de antecedência

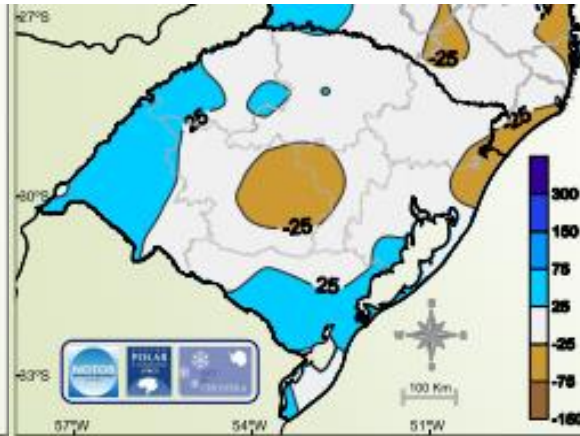
Anomalia de Precipitação MoReClima-SUL (Janeiro/2023)

Iniciado em Outubro/2022



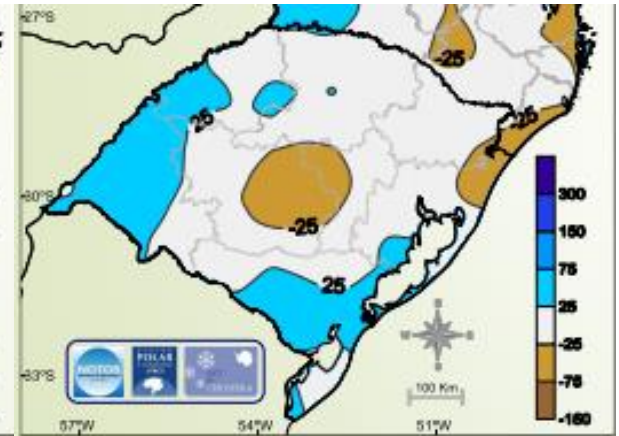
Desvio em milímetros (mm)
(Climatologia GPCC – 1981-2010)

Iniciado em Novembro/2022



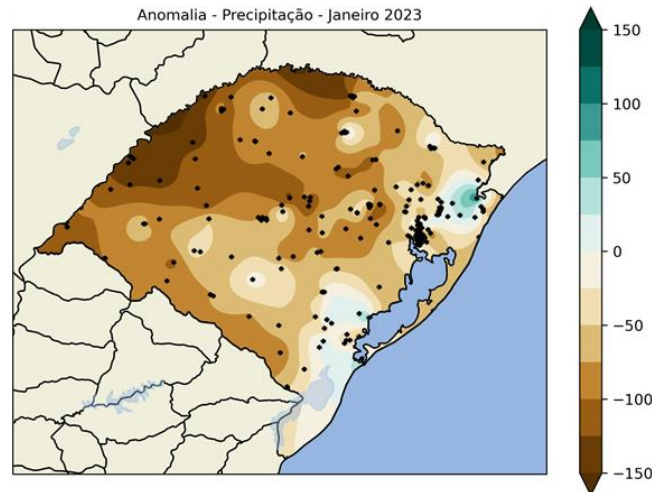
Desvio em milímetros (mm)
(Climatologia GPCC – 1981-2010)

Iniciado em Dezembro/2022



Desvio em milímetros (mm)
(Climatologia GPCC – 1981-2010)

Observado:



Verificação dos modelos por tempo de antecedência

Anomalia de Temperatura MoReClima-SUL (Janeiro/2023)

Iniciado em Outubro/2022



Desvio em graus Celsius (°C)
(Climatologia CRU - 1981-2010)

Iniciado em Novembro/2022



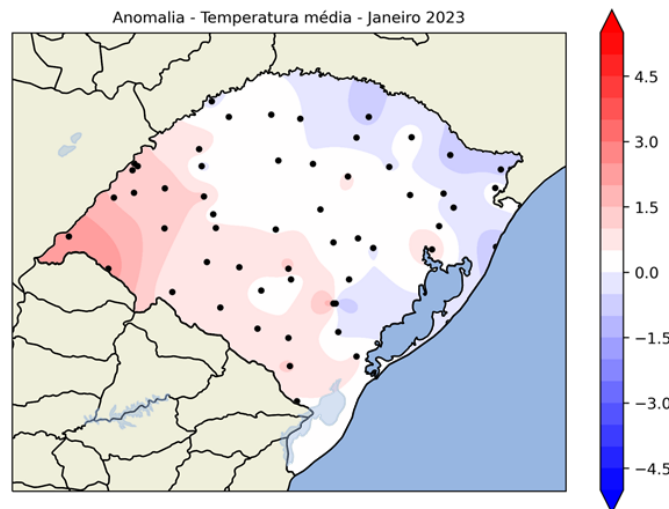
Desvio em graus Celsius (°C)
(Climatologia CRU - 1981-2010)

Iniciado em Dezembro/2022



Desvio em graus Celsius (°C)
(Climatologia CRU - 1981-2010)

Observado:



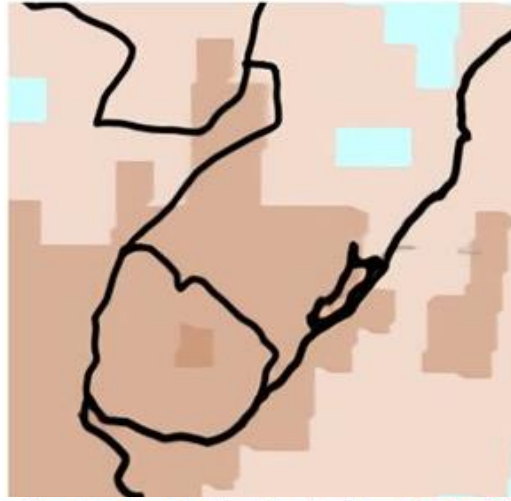
Verificação dos modelos por tempo de antecedência

Anomalia de Precipitação APCC (Janeiro/2023)

Iniciado em Outubro/2022



Iniciado em Novembro/2022

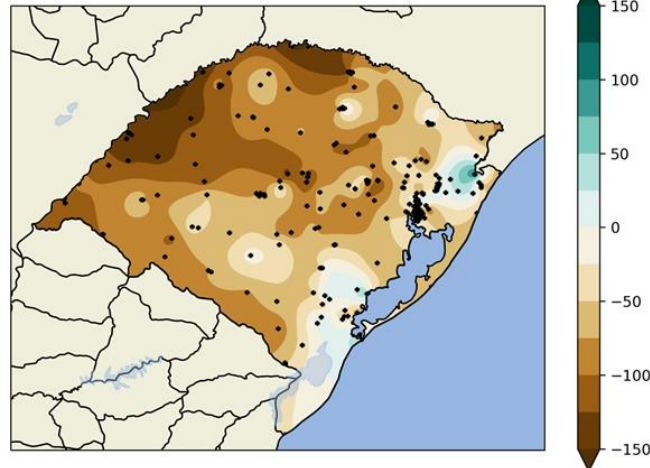


Iniciado em Dezembro/2022



Anomalia - Precipitação - Janeiro 2023

Observado:



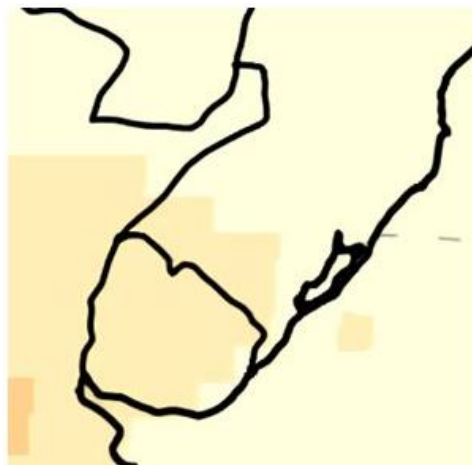
Verificação dos modelos por tempo de antecedência

Anomalia de Temperatura APCC (Janeiro/2023)

Iniciado em Outubro/2022



Iniciado em Novembro/2022

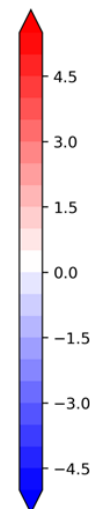
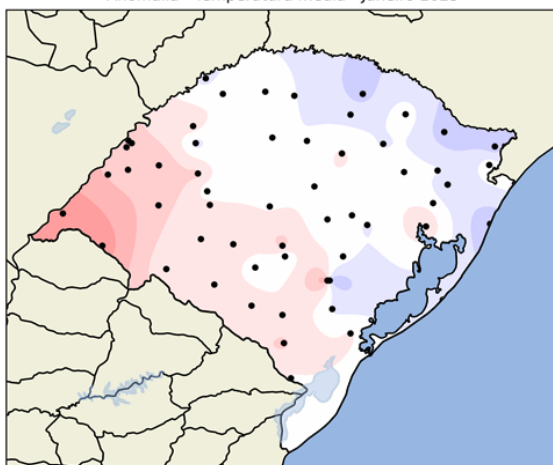


Iniciado em Dezembro/2022



Anomalia - Temperatura média - Janeiro 2023

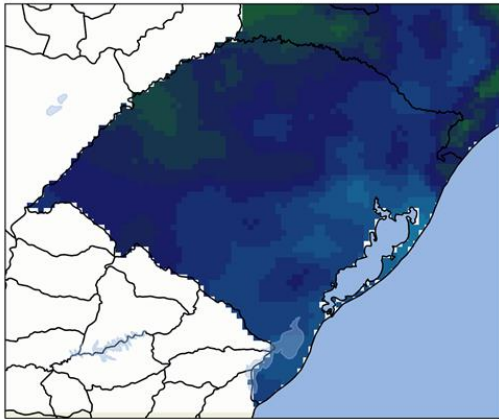
Observado:



Climatologia de FAM

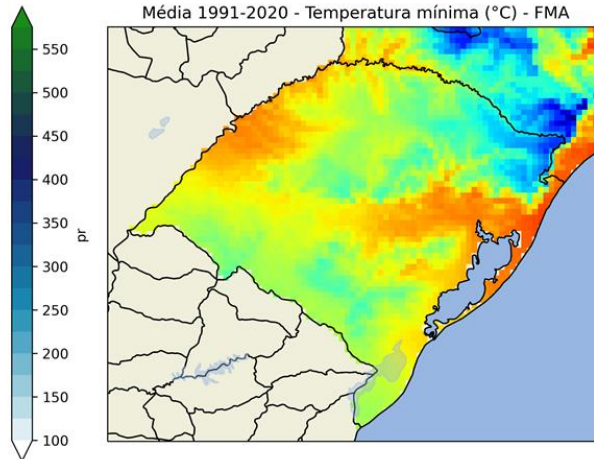
- O contraste de chuva meridional de chuva no RS é menos expressivo, sendo o oeste do RS a área com maiores acumulados no período (> 400mm).
- As médias de temperatura mínima e máxima são mais altas no noroeste do RS e na faixa central do estado até o litoral norte;

Média 1991-2020 - Precipitação - FMA



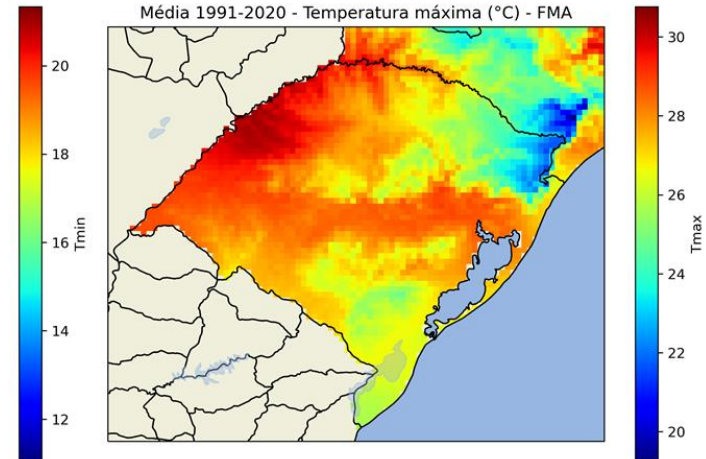
Precipitação

Média 1991-2020 - Temperatura mínima (°C) - FMA



Temperatura mínima

Média 1991-2020 - Temperatura máxima (°C) - FMA



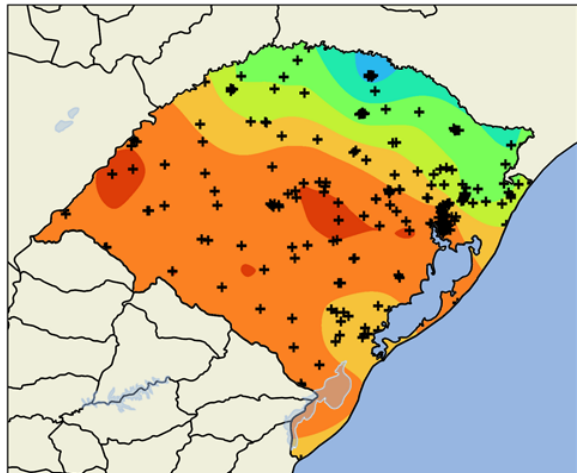
Temperatura máxima

Condições observadas em NDJ/2022-23

Valores absolutos

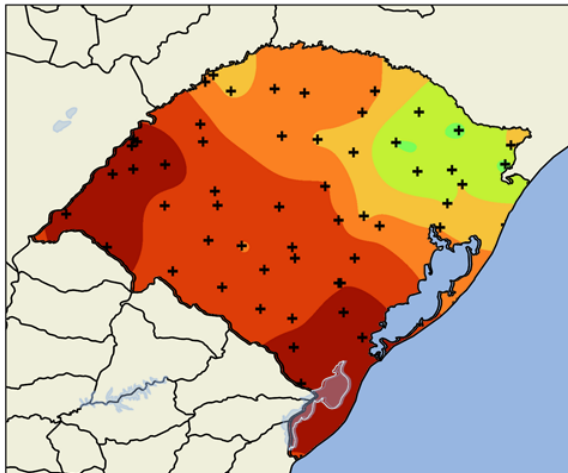
Novembro

Precipitação acumulada - NOVEMBRO 2022



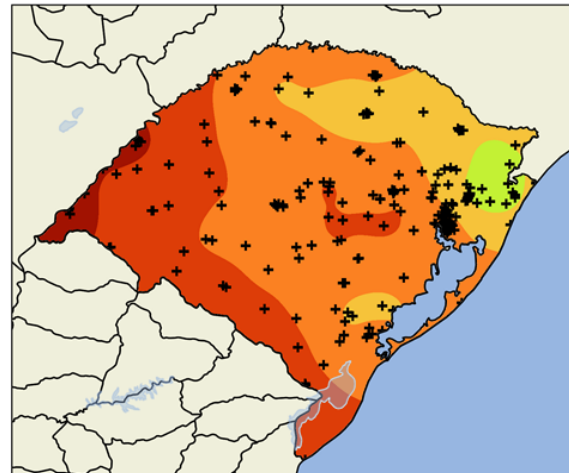
Dezembro

Precipitação acumulada - DEZEMBRO 2022



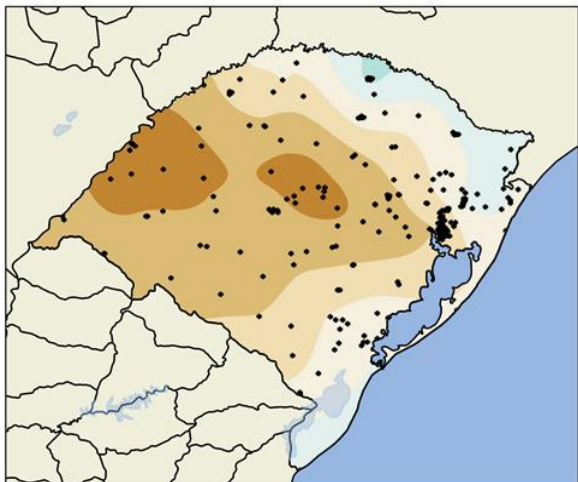
Janeiro

Precipitação acumulada - JANEIRO 2023

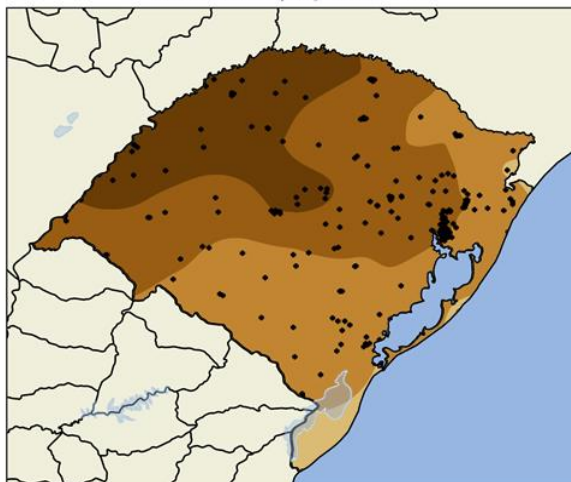


ANOMALIAS

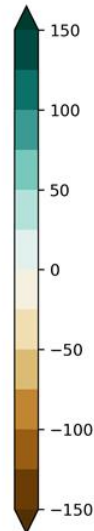
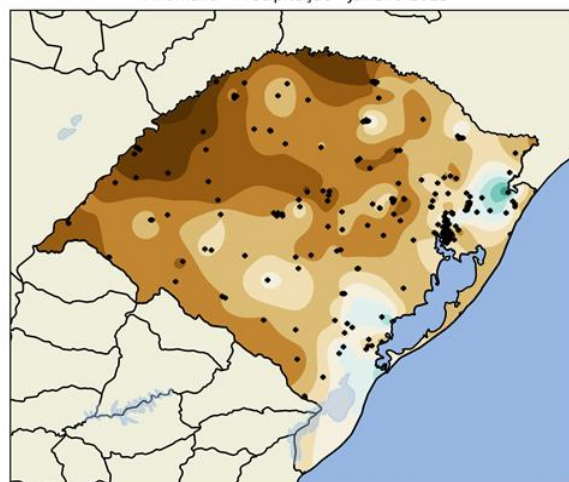
Anomalia - Precipitação - Novembro



Anomalia - Precipitação - Dezembro



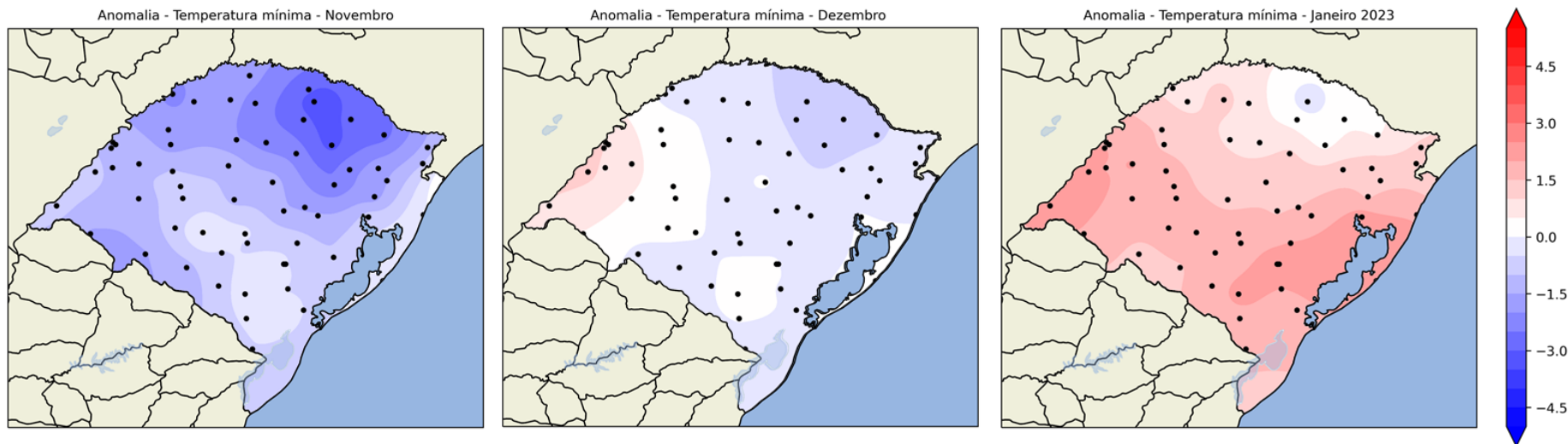
Anomalia - Precipitação - Janeiro 2023



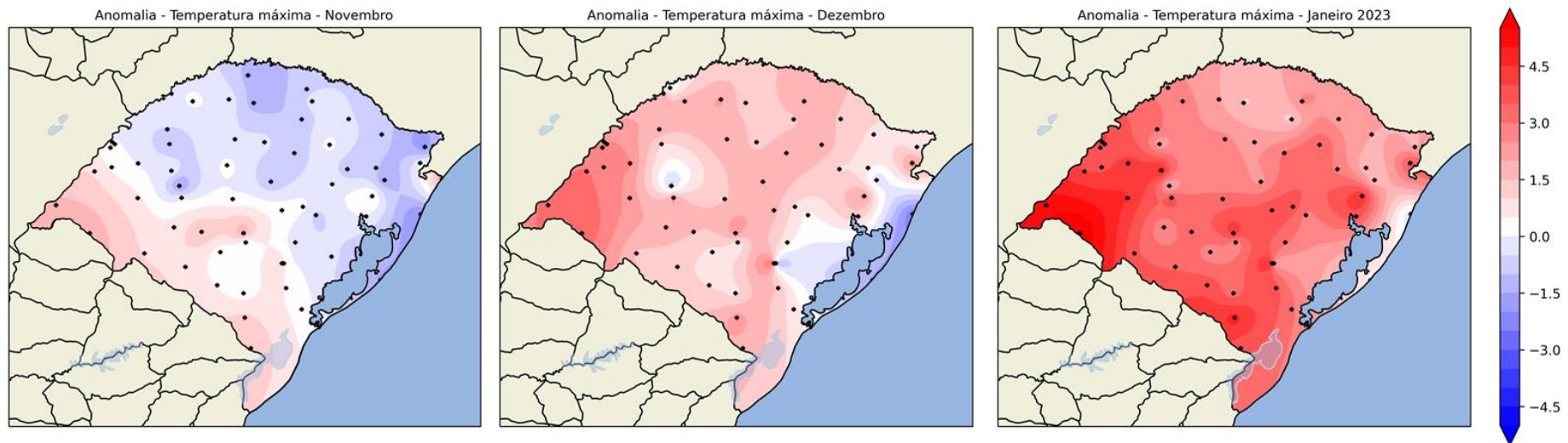
Condições observadas em NDJ/2022-23

Anomalias

Tmin



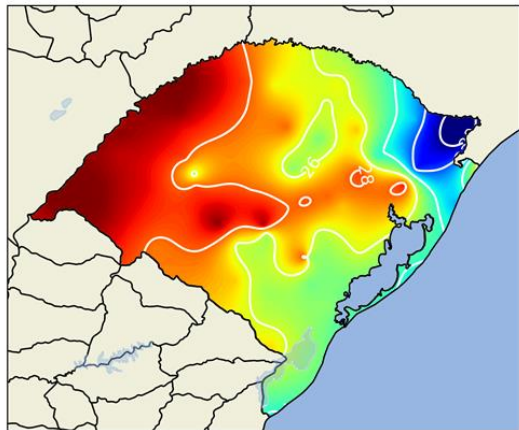
Tmax



Condições observadas em NDJ/2022-23

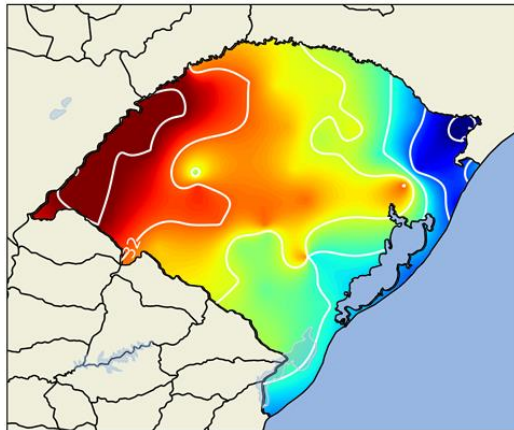
Novembro

Temperatura máxima - NOVEMBRO 2022



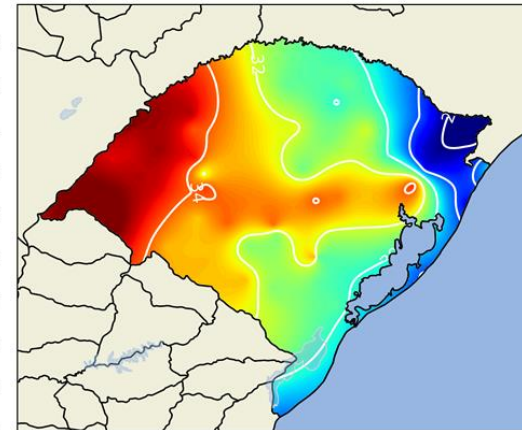
Dezembro

Temperatura máxima - DEZEMBRO 2022



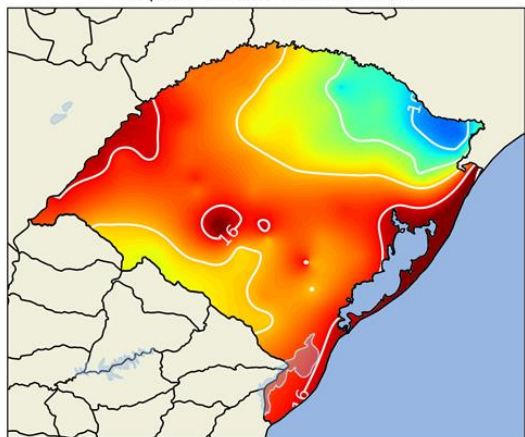
Janeiro

Temperatura máxima - JANEIRO 2023

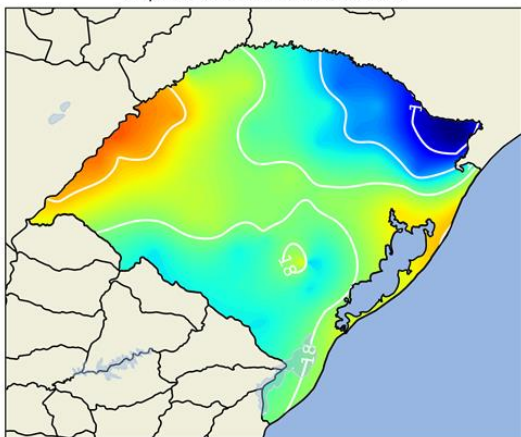


Tmax

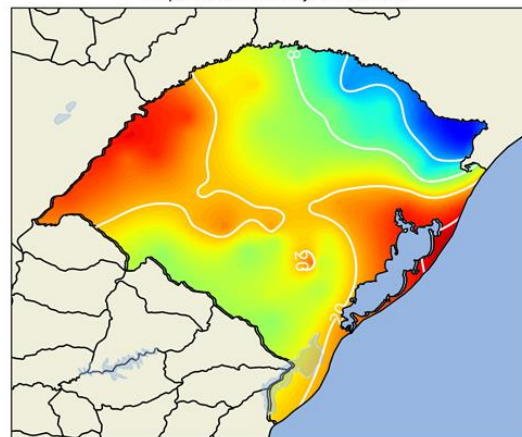
Temperatura mínima - NOVEMBRO 2022



Temperatura mínima - DEZEMBRO 2022

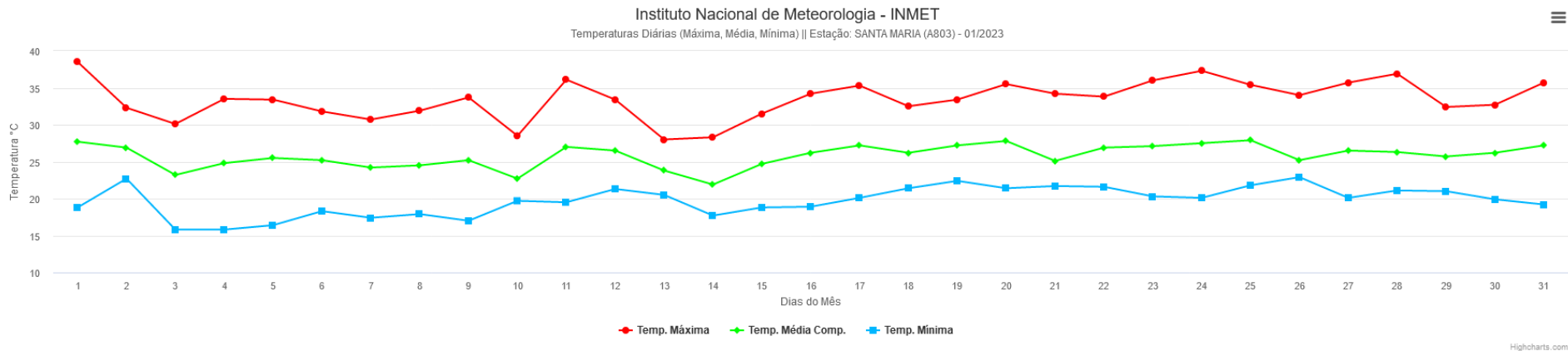


Temperatura mínima - JANEIRO 2023

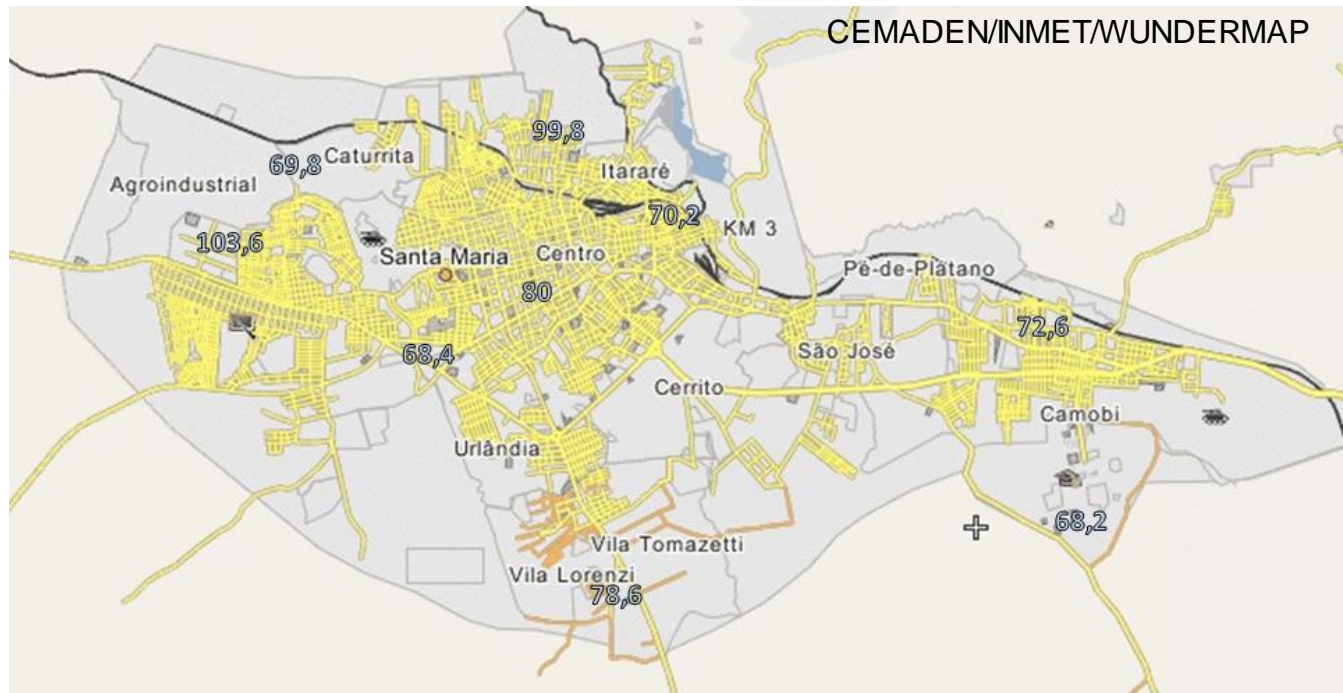


Tmin

Condições observadas em Jan/2022



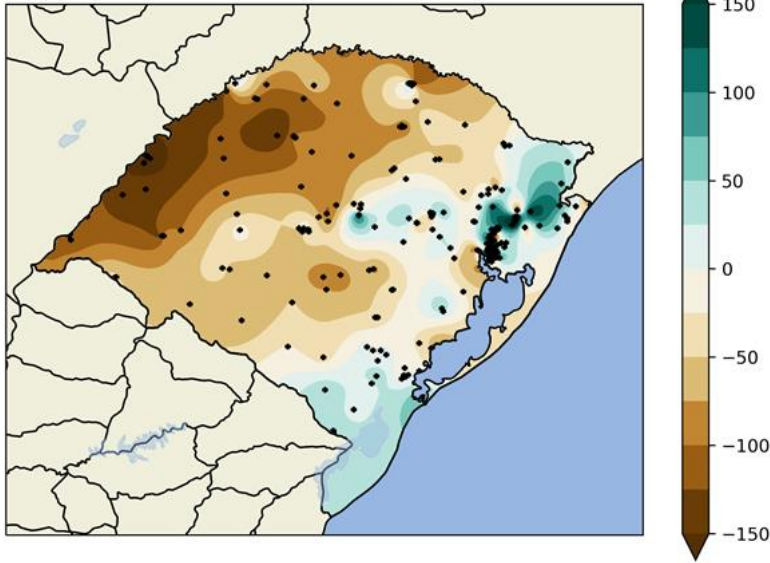
Precipitação mensal em Dezembro - Santa Maria



Condições observadas em 2022 vs 2023

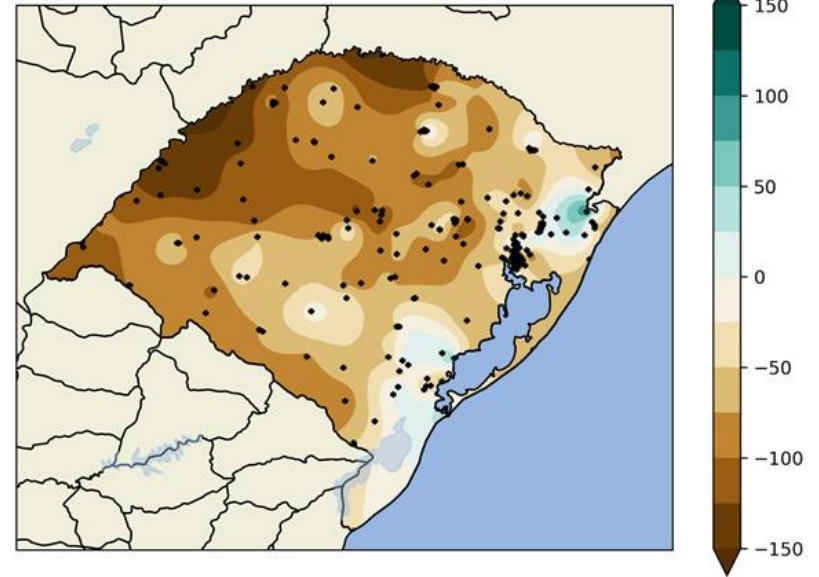
2022

Anomalia - Precipitação - Janeiro 2022

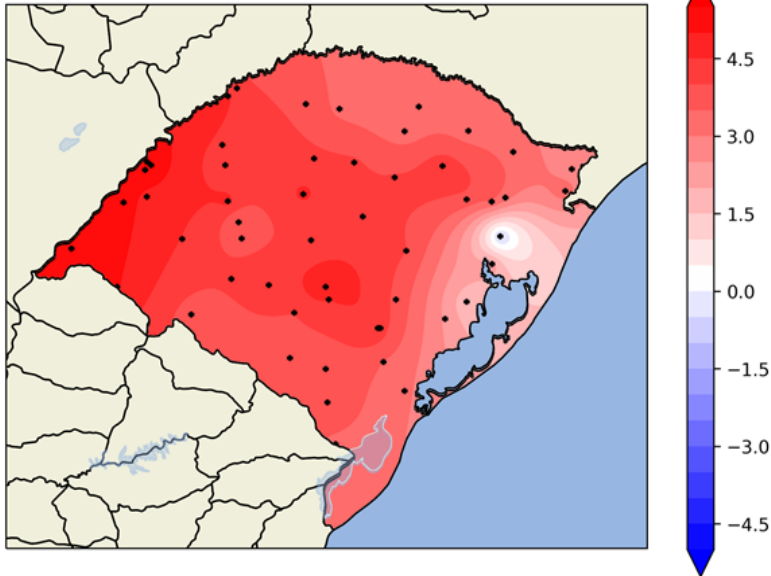


2023

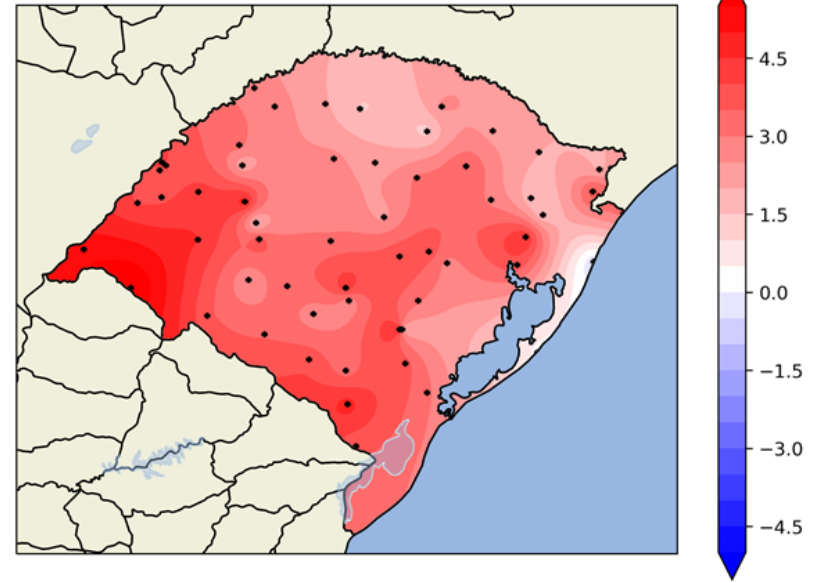
Anomalia - Precipitação - Janeiro 2023



Anomalia - Temperatura máxima - Janeiro 2022

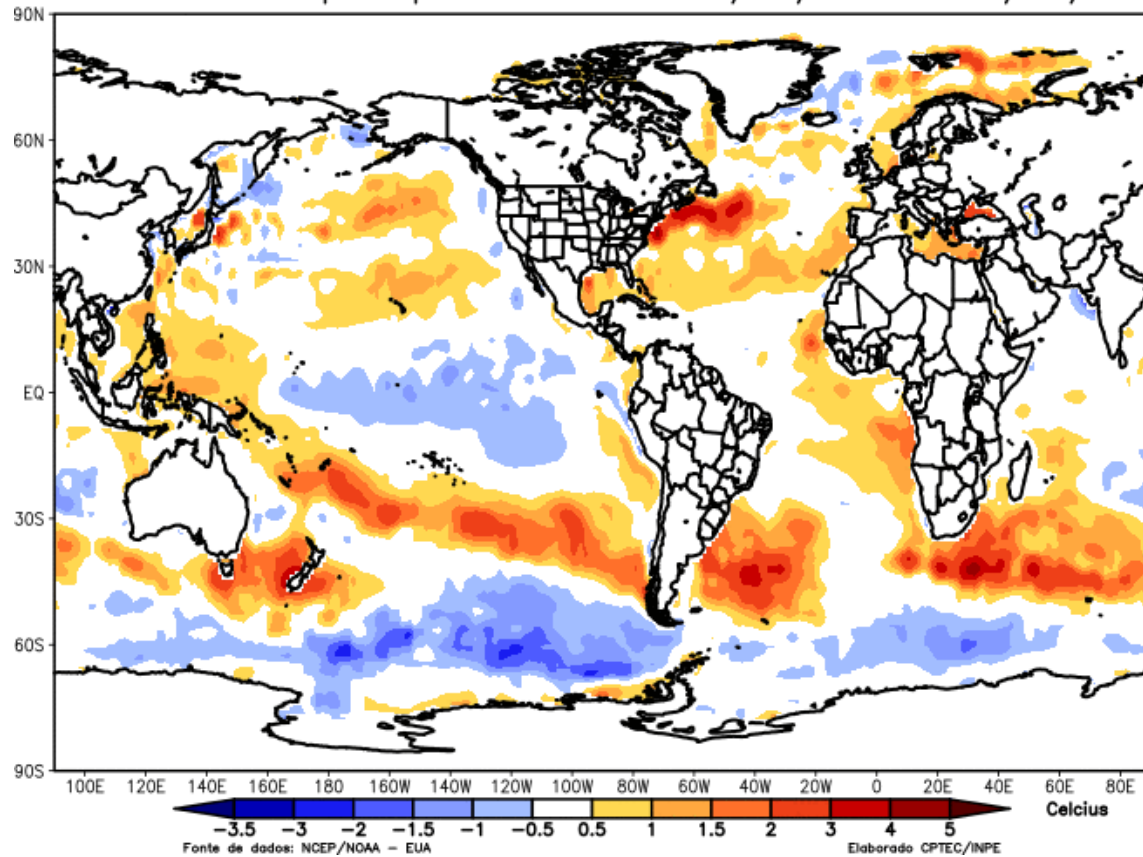


Anomalia - Temperatura máxima - Janeiro 2023



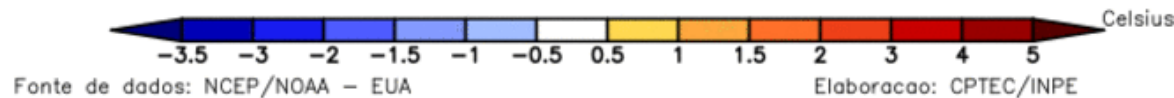
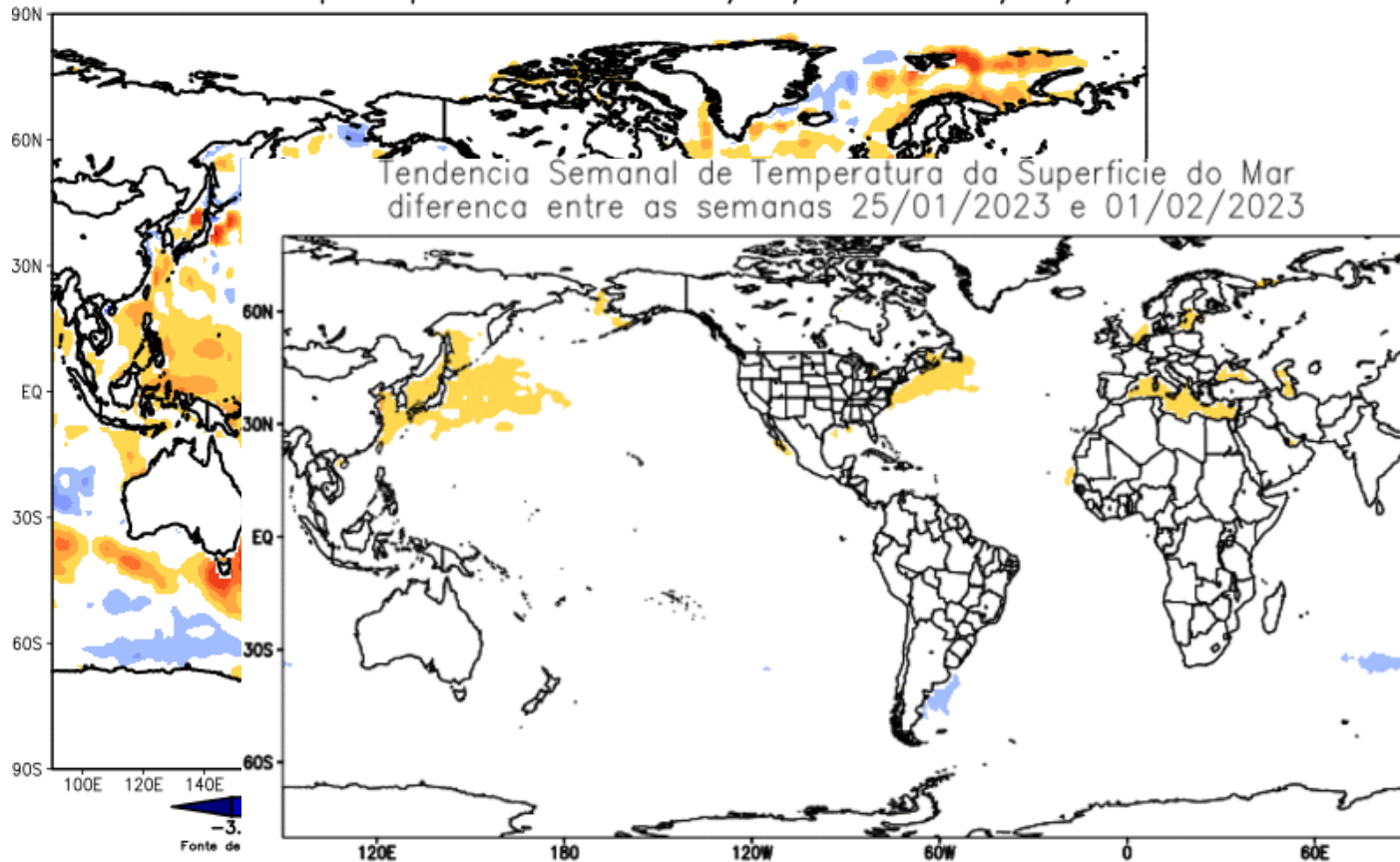
Condições oceânicas

Anomalia de Temp. Superfície do Mar 22/01/2023 a 28/01/2023



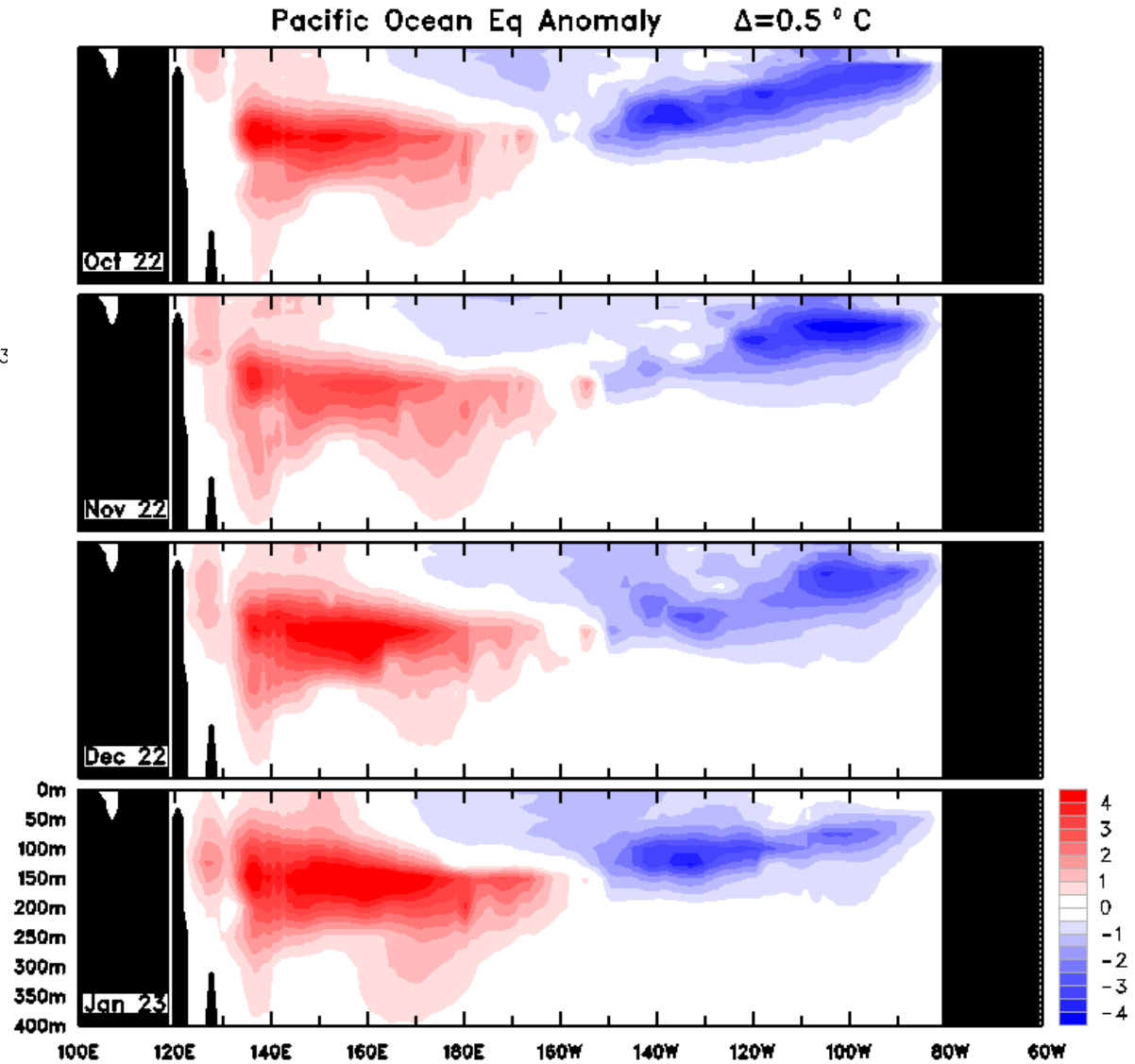
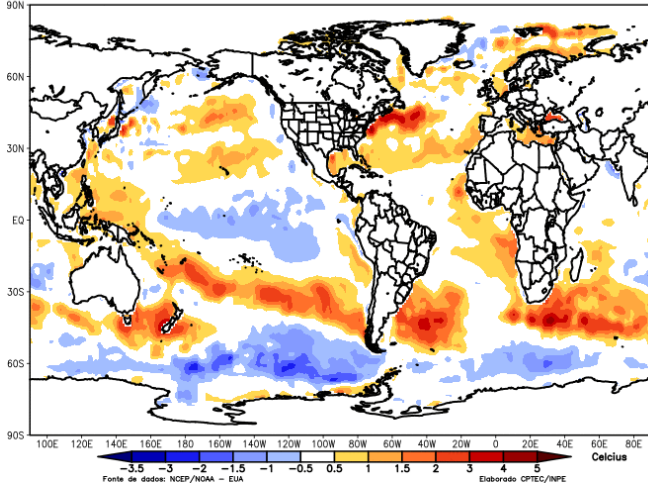
Condições oceânicas

Anomalia de Temp. Superfície do Mar 22/01/2023 a 28/01/2023



Condições oceânicas

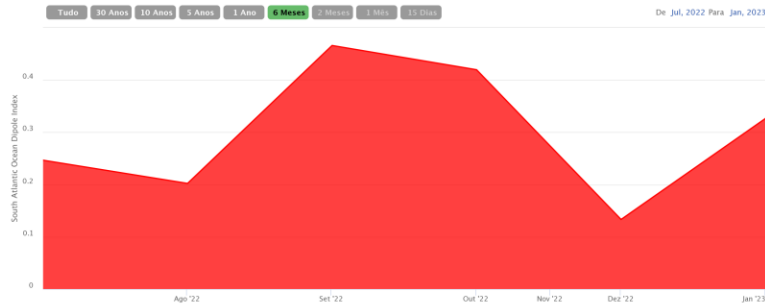
Anomalia de Temp. Superfície do Mar 22/01/2023 a 28/01/2023



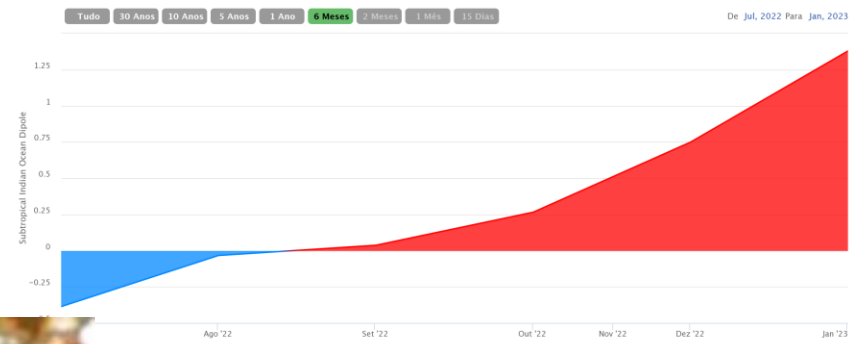
Analysis done Jan 26 22:17

Índices oceânicos

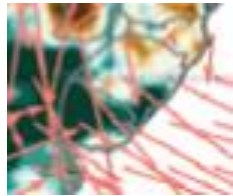
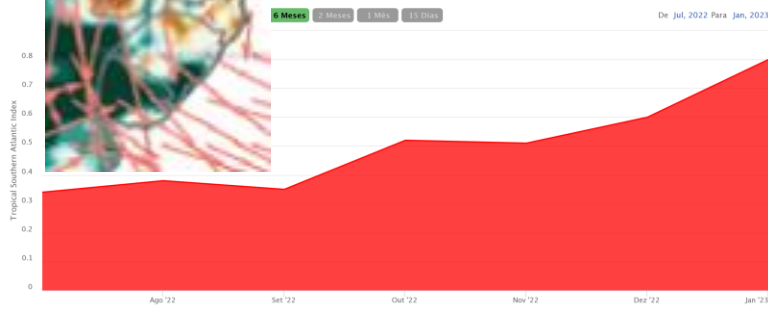
South Atlantic Ocean Dipole Index (SAODI) - Mensal



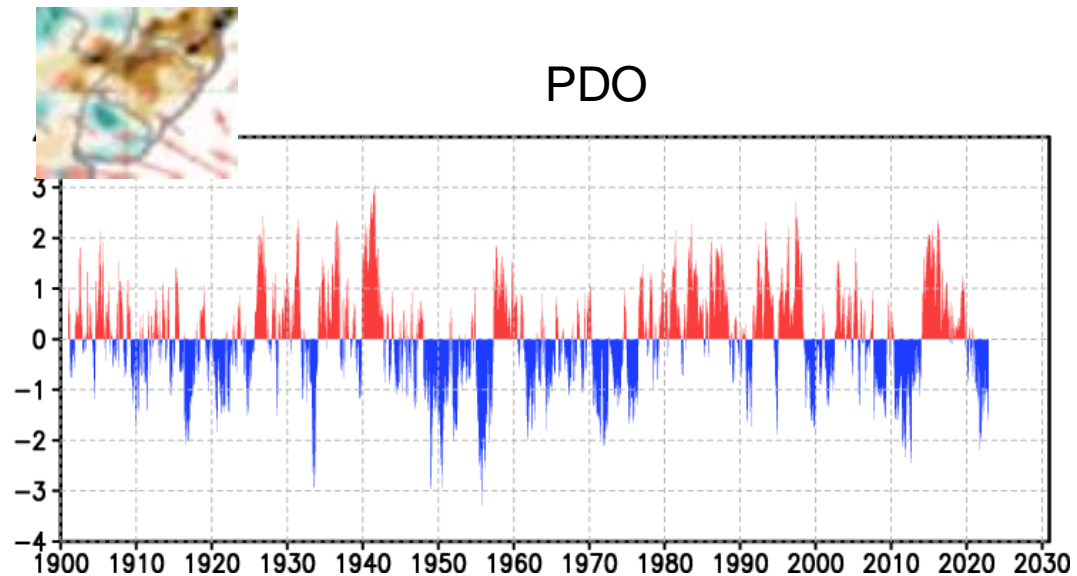
Subtropical Indian Ocean Dipole (SIOD) - Mensal



Tropical Southern Atlantic Index (TSA) - Mensal

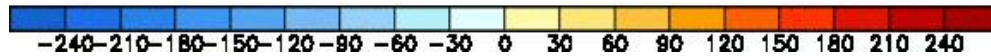
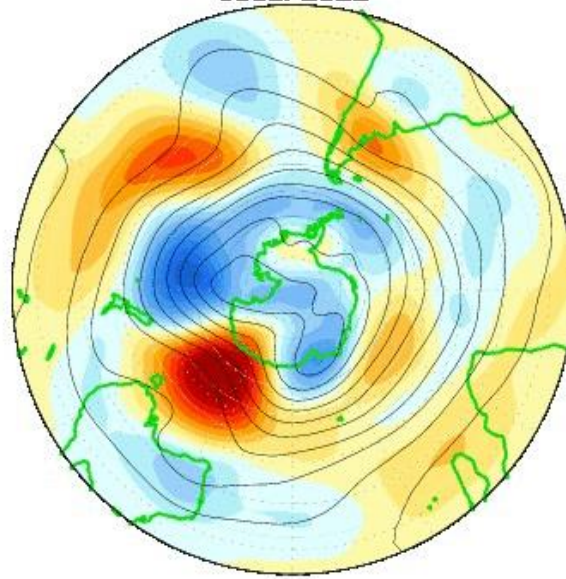


PDO

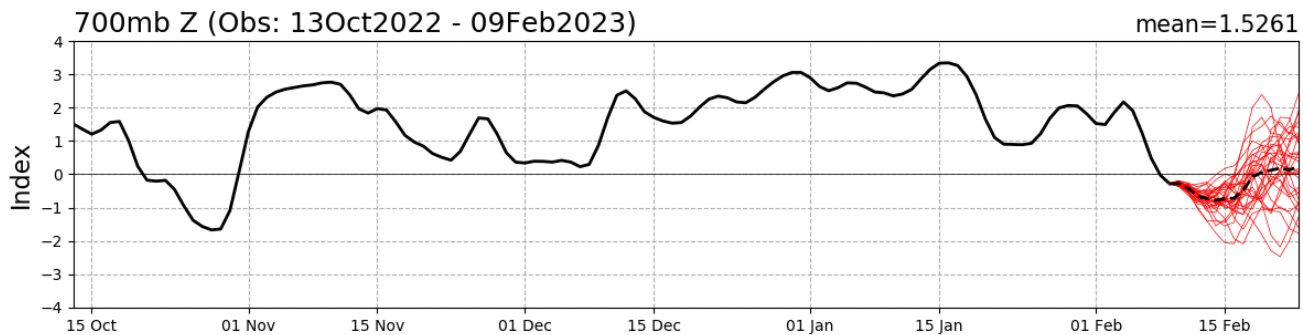


Índices atmosférico (AAO)

CDAS 500-hPa HT Anoms (5d rm)
05SEP2022

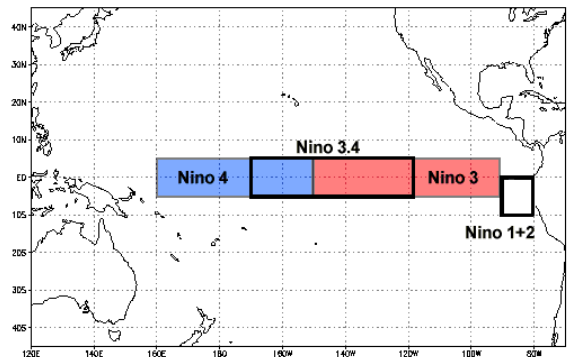
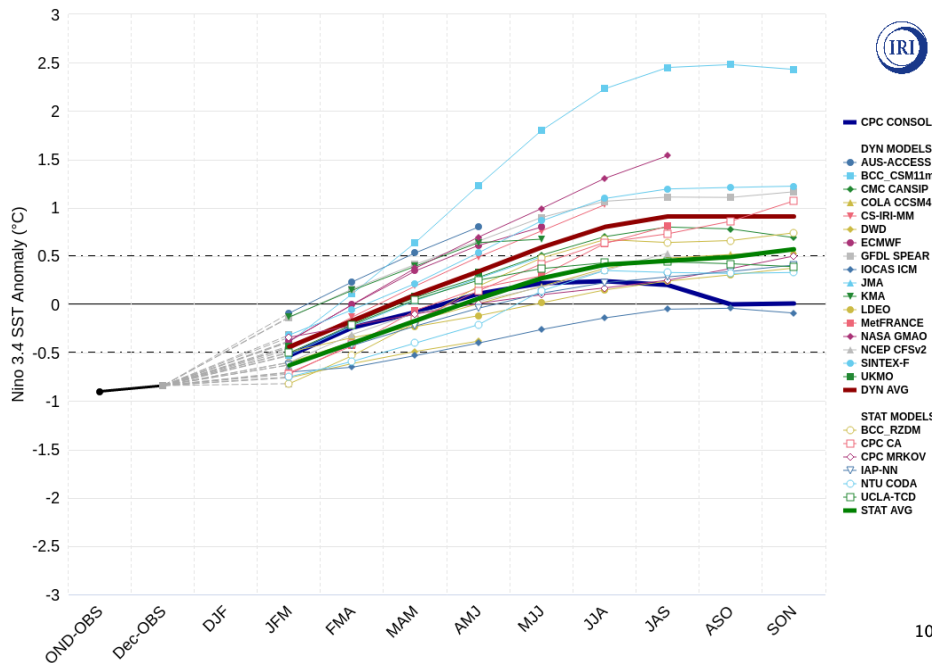


AAO Index: Observed & GEFS Forecasts



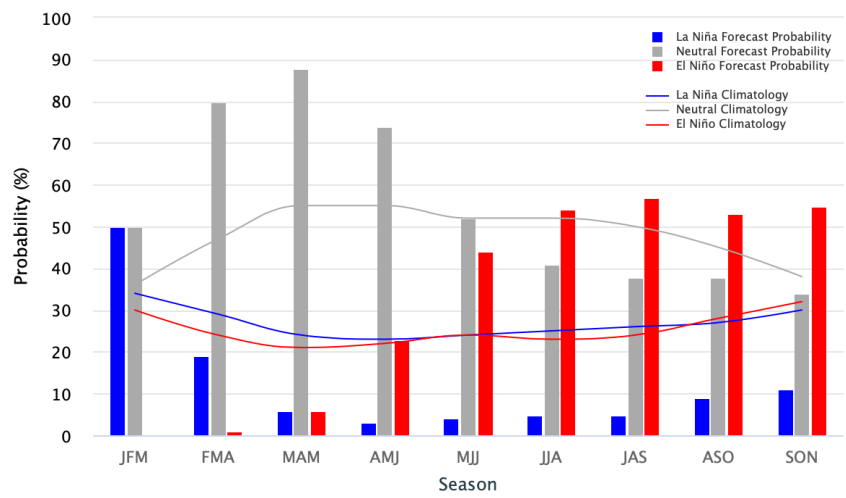
Previsões do ENOS

Model Predictions of ENSO from Jan 2023

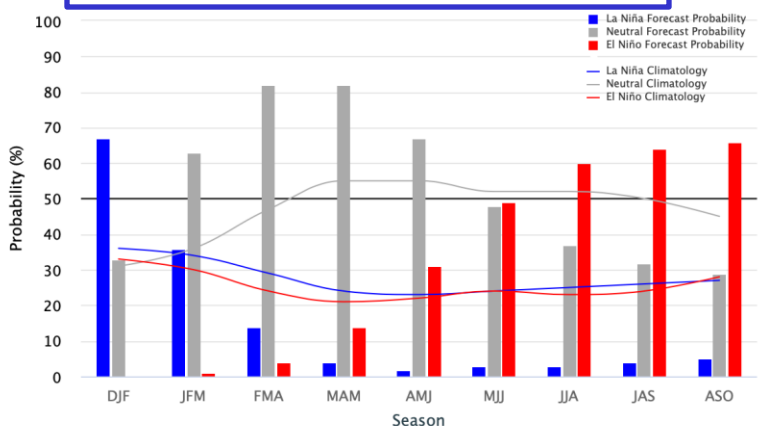


Mid-January 2023 IRI Model-Based Probabilistic ENSO Forecasts

ENSO state based on NINO3.4 SST Anomaly Neutral ENSO: -0.5 °C to 0.5 °C

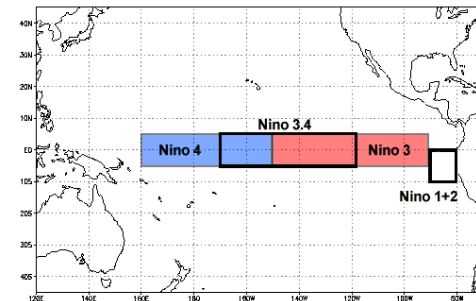
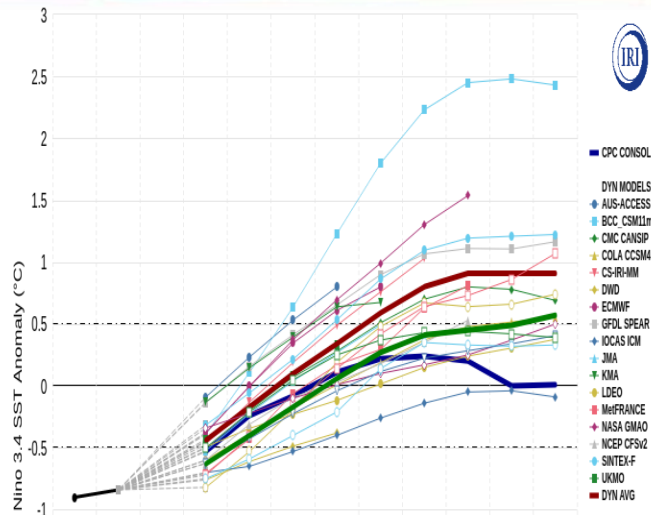


Previsão do mês passado

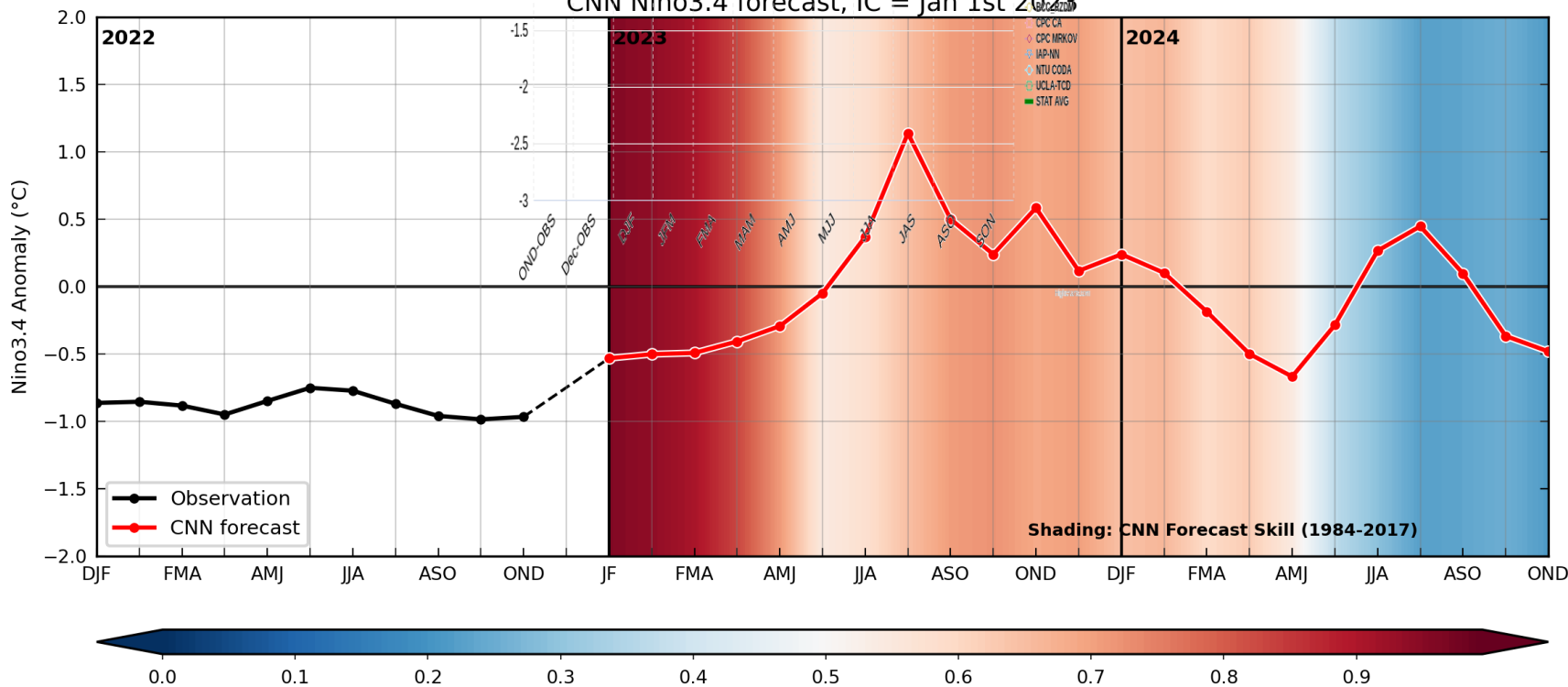


Previsões do ENOS

Model Predictions of ENSO from Jan 2023



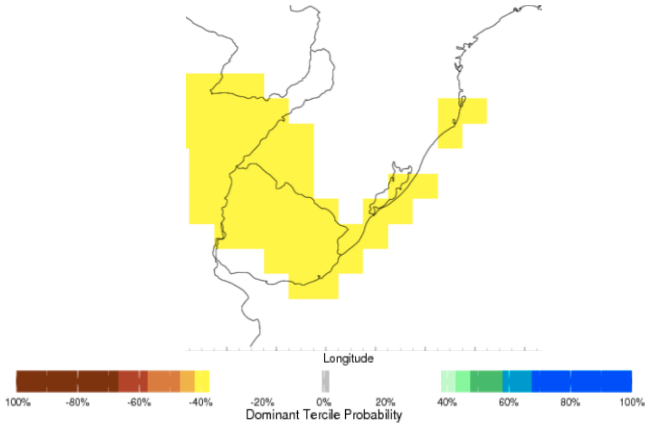
CNN Nino3.4 forecast, IC = Jan 1st 2023



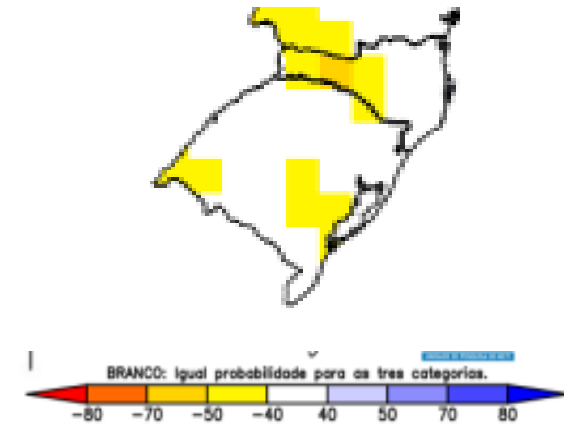
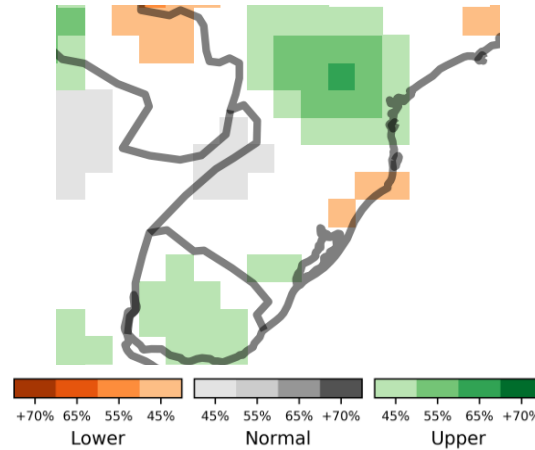
Previsões sazonais (FMA) - Precipitação (probabilística)

Multimodelo [CPTEC](#)/[INMET](#)/[FUNCEME](#)

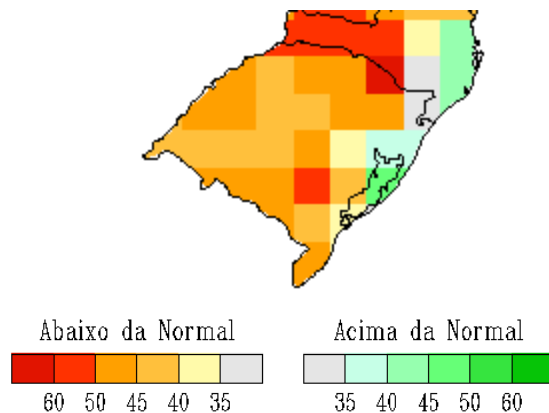
Multimodelo IRI



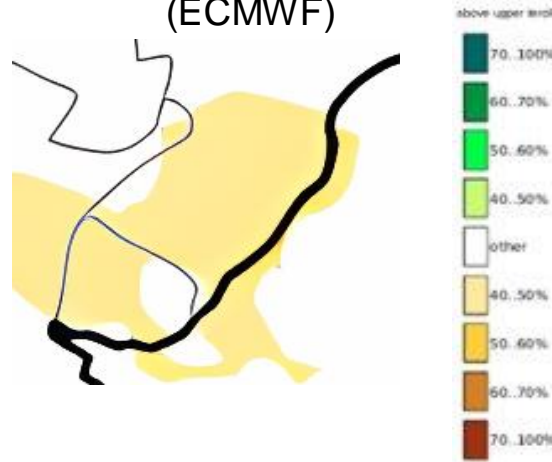
CIMA-CONICET-UBA



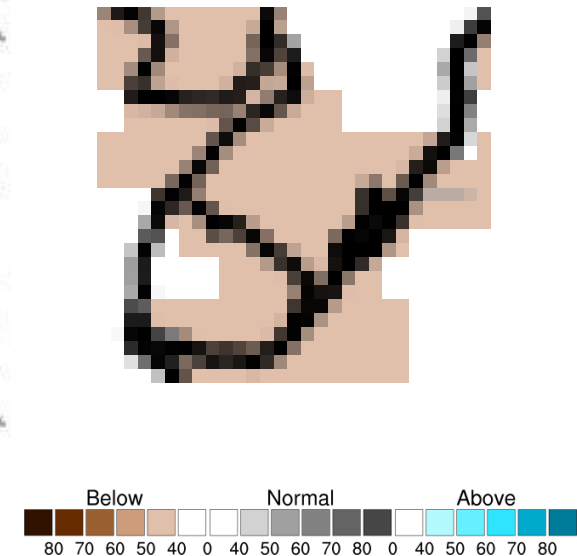
INMET



Multissistema C3S (ECMWF)



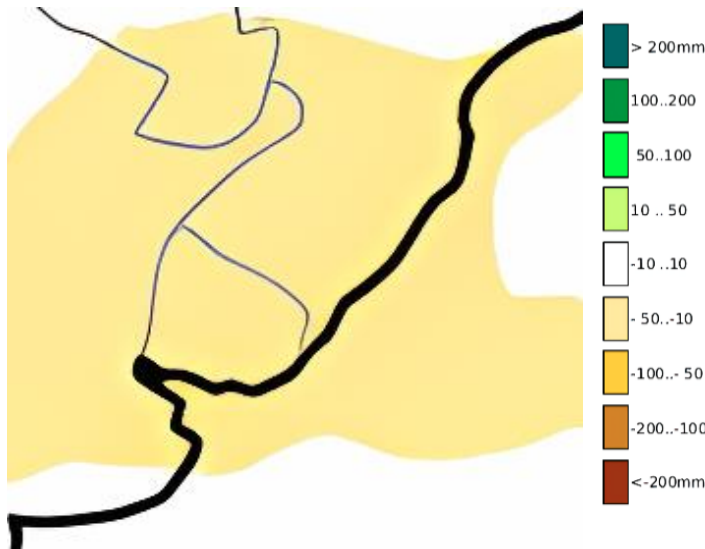
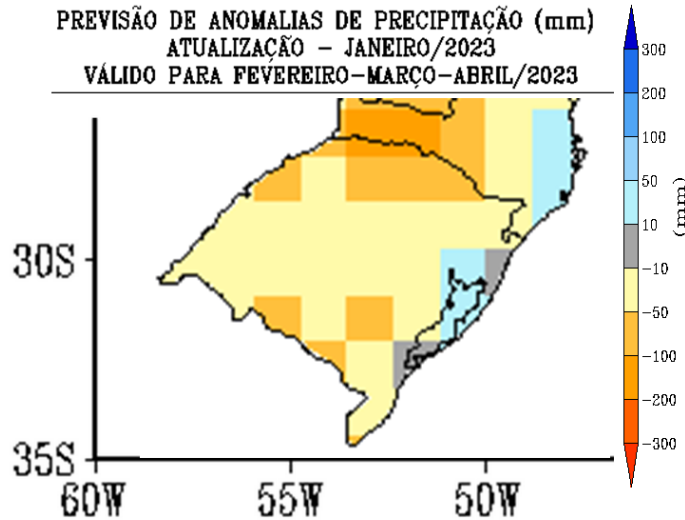
APCC



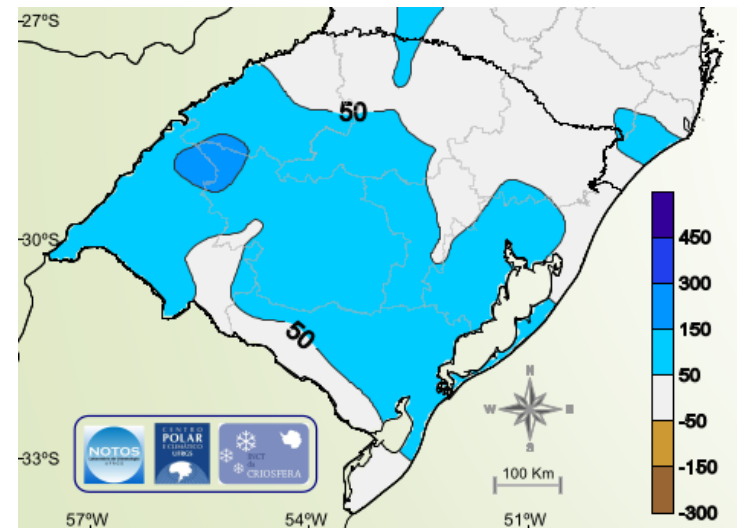
Previsões sazonais

Previsões sazonais (FMA) - Precipitação (anomalias)

PREVISÃO DE ANOMALIAS DE PRECIPITAÇÃO (mm)
ATUALIZAÇÃO - JANEIRO/2023
VÁLIDO PARA FEVEREIRO-MARÇO-ABRIL/2023

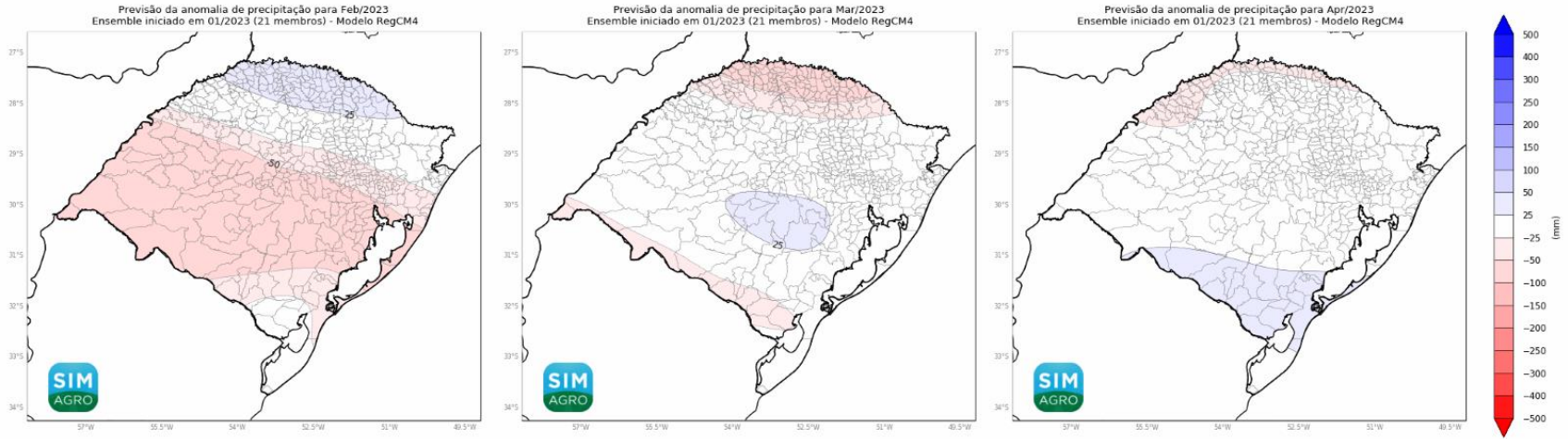


MoReClima-SUL

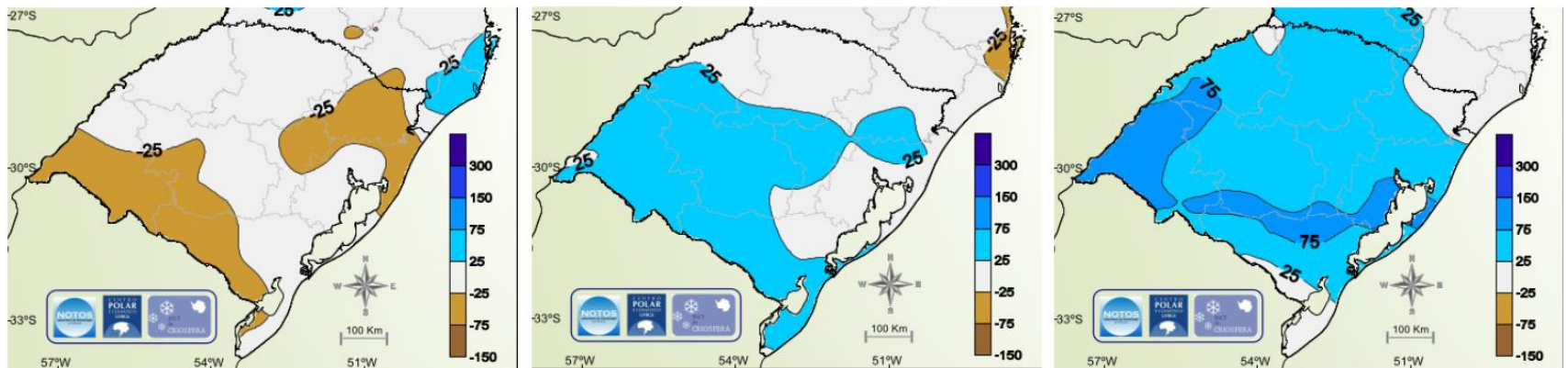


Previsões mensais

Precipitação (mm)

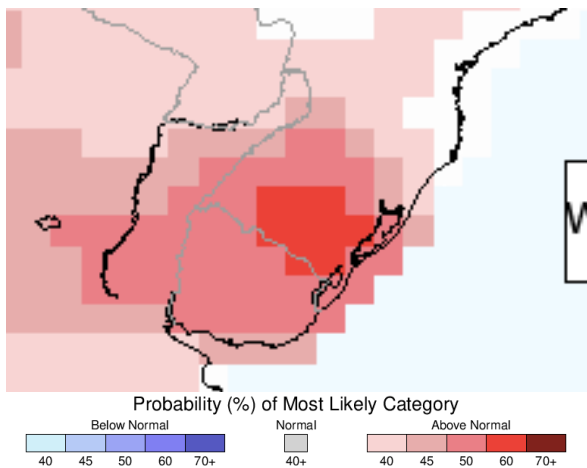


MoReClima-SUL

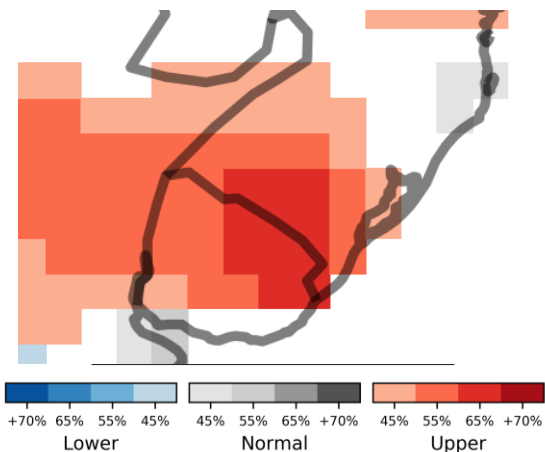


Previsões sazonais (FMA) - Temperatura (probabilística)

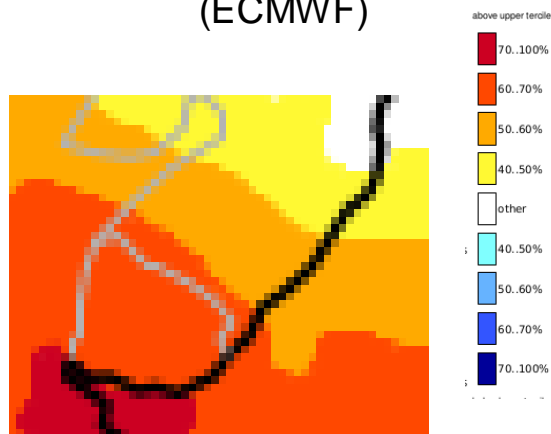
Multimodelo IRI



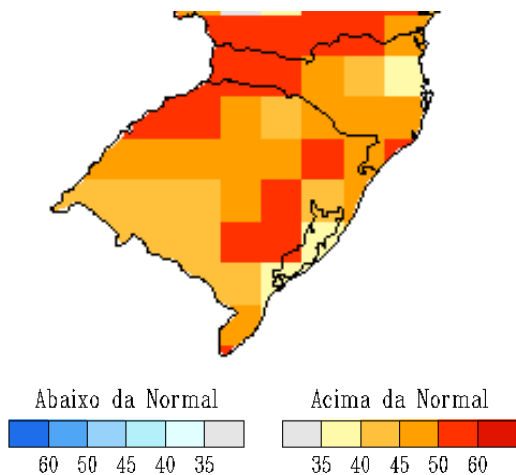
CIMA-CONICET-UBA



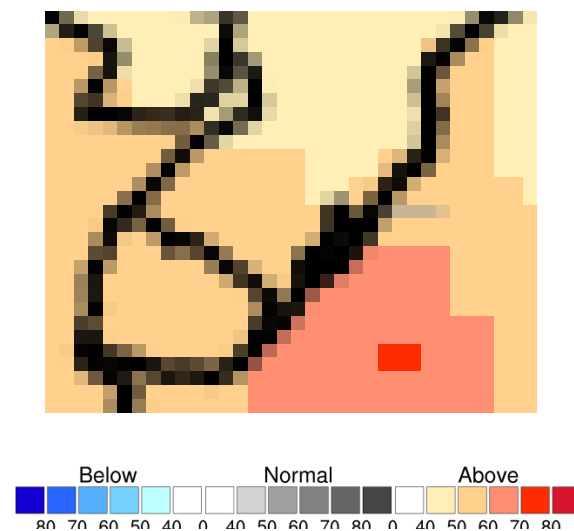
Multissistema C3S (ECMWF)



INMET



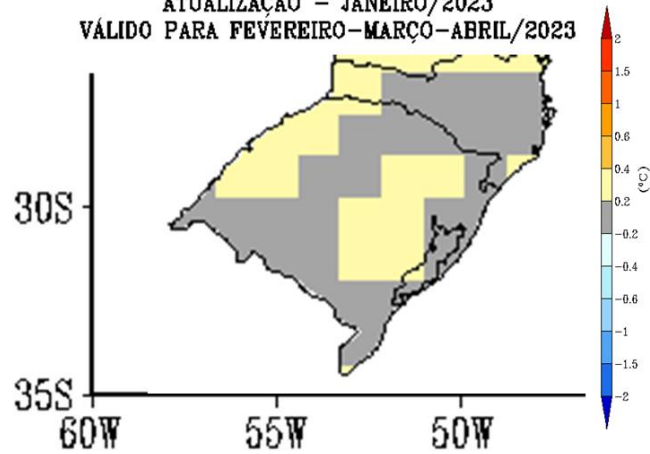
APCC



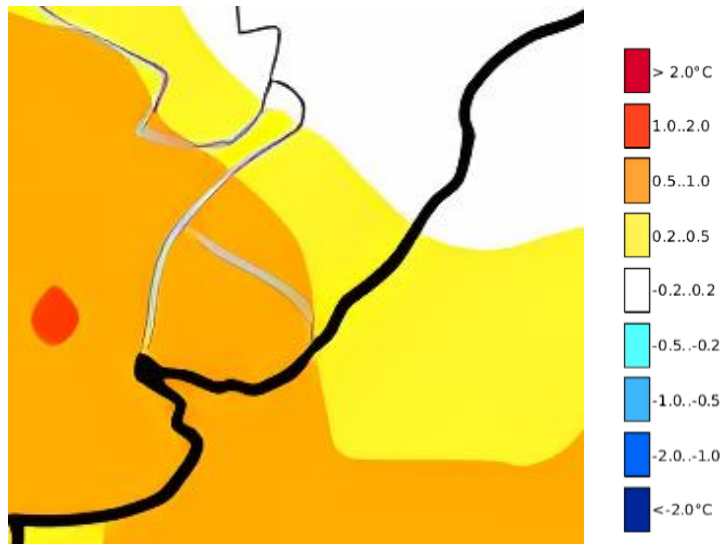
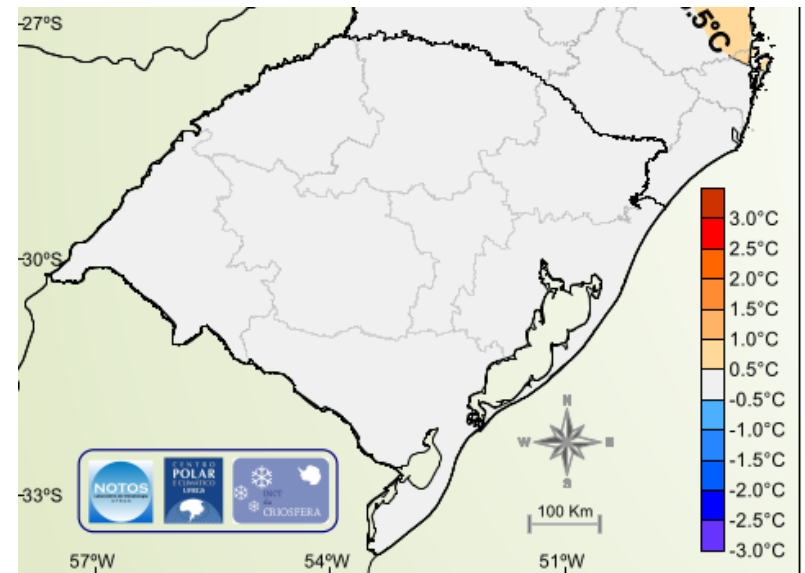
Previsões sazonais

Temperatura (°C)

PREVISÃO DE ANOMALIAS DE TEMPERATURA (°C)
ATUALIZAÇÃO - JANEIRO/2023
VÁLIDO PARA FEVEREIRO-MARÇO-ABRIL/2023



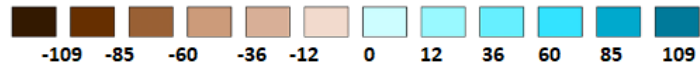
MoReClima-SUL



C3S

Previsões mensais- precipitação (mm)

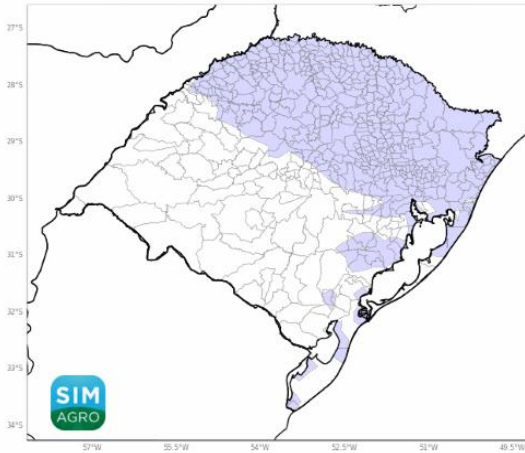
APCC



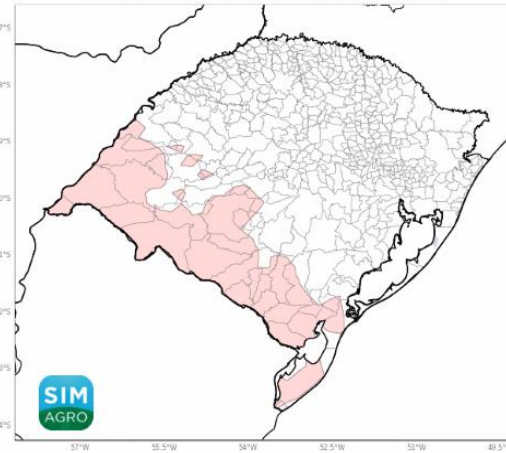
Previsões mensais – Temperatura (°C)

RegCM4

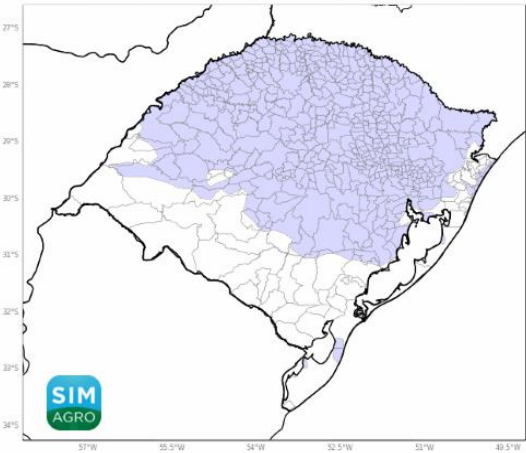
Previsão da anomalia de temperatura média do ar a 2m para Feb/2023
Ensemble iniciado em 01/2023 (26 membros) - Modelo RegCM4



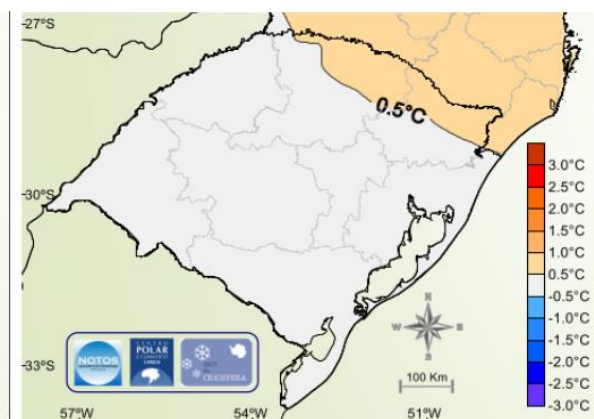
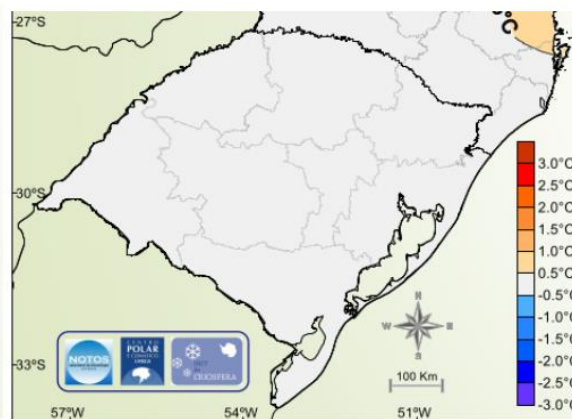
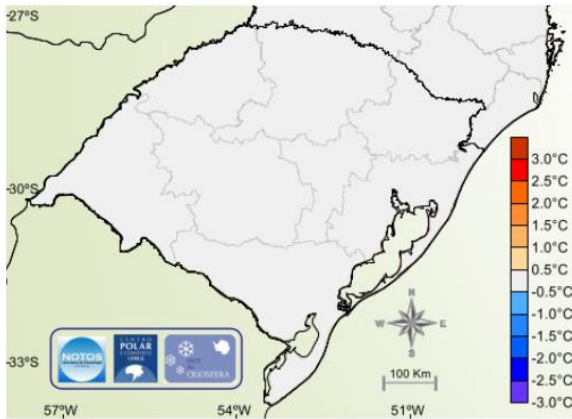
Previsão da anomalia de temperatura média do ar a 2m para Mar/2023
Ensemble iniciado em 01/2023 (26 membros) - Modelo RegCM4



Previsão da anomalia de temperatura média do ar a 2m para Apr/2023
Ensemble iniciado em 01/2023 (26 membros) - Modelo RegCM4

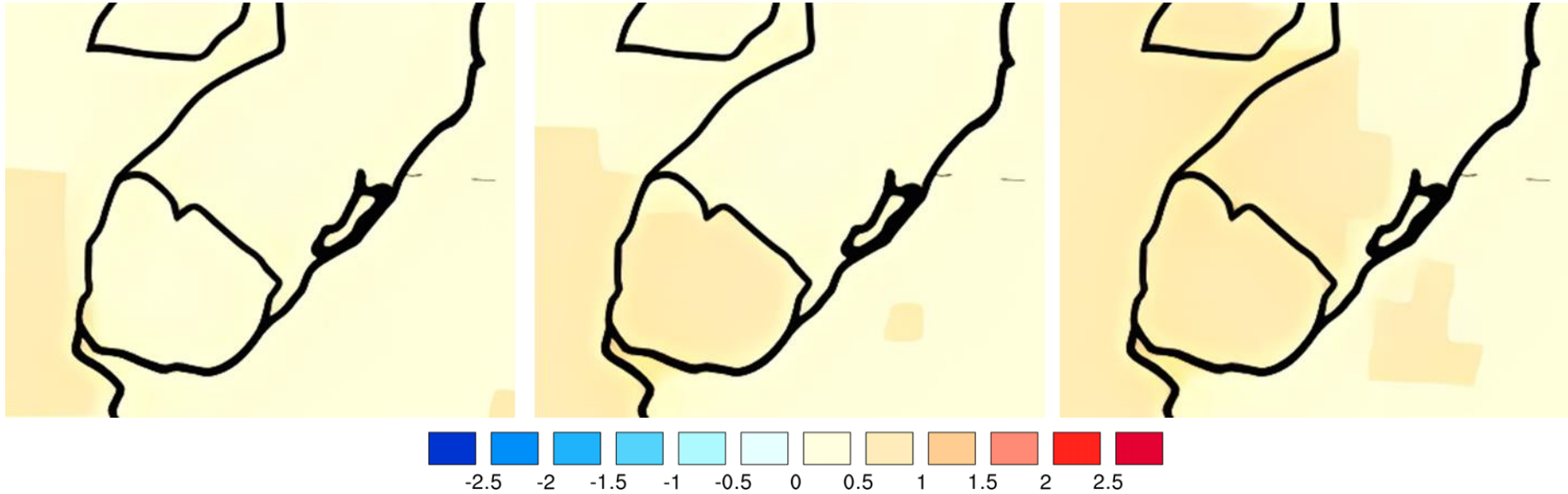


MoReClima-SUL



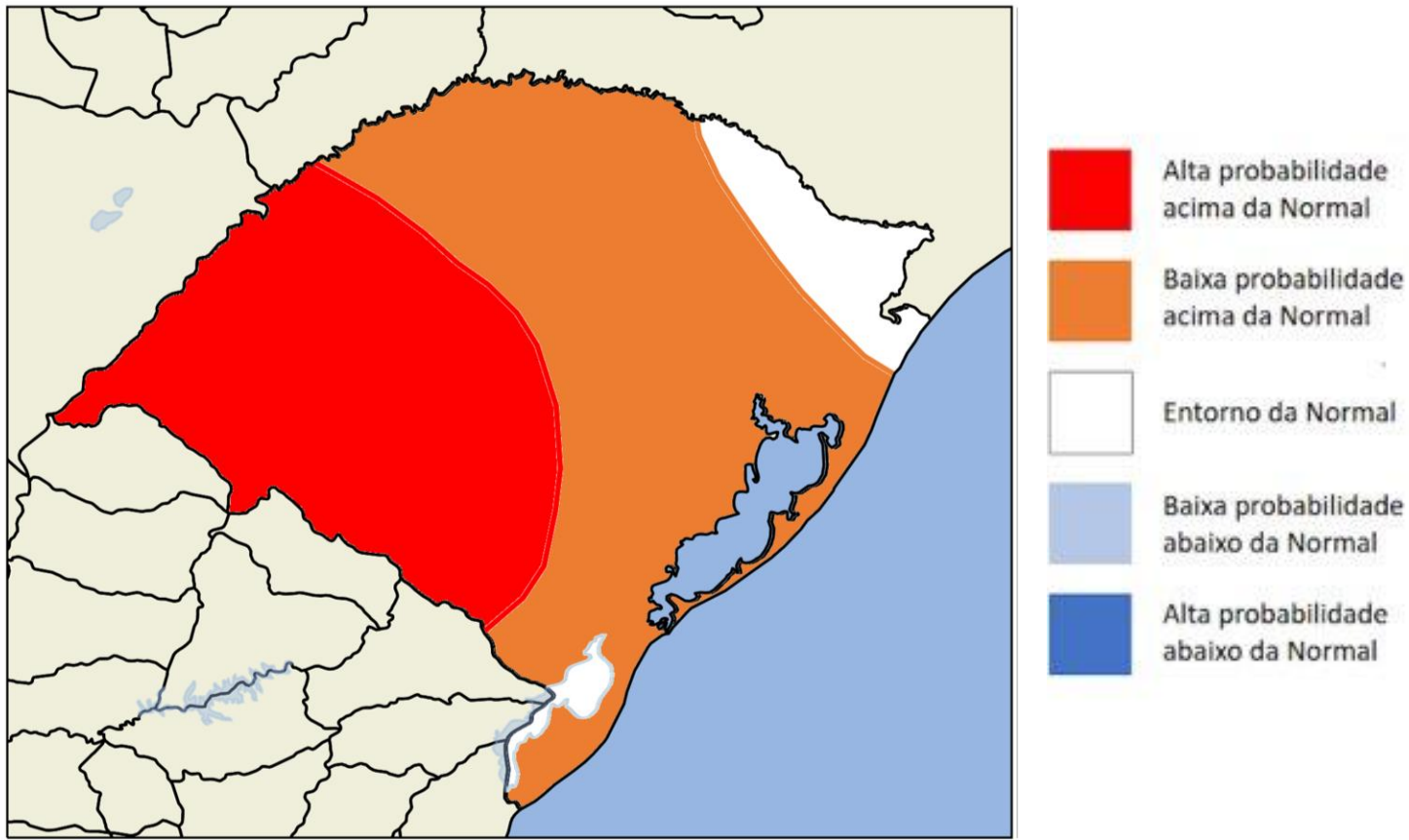
Previsões mensais – Temperatura (°C)

APCC



Previsão por consenso

Temperatura (FMA/2023)



Previsão por consenso

Precipitação (FMA/2023)

