

1 **Effects of storage on vis-NIR-SWIR reflectance spectra of Mombasa grass leaf**
2 **samples**

3 **Efeitos do armazenamento no espectro de reflectância vis-NIR-SWIR de amostras**
4 **foliares de capim Mombaça**

5
6 **Tiago Rodrigues Tavares¹ Peterson Ricardo Fiorio^{1*} Hugo Tameirão Seixas²**
7 **Amparo Cisneiros Garcia¹ Pedro Paulo da Silva Barros³**

8
9 **ABSTRACT**

10 Vis-NIR-SWIR reflectance spectra of leaf samples, collected in the laboratory, allow the
11 calibration of predictive models to quantify their physicochemical attributes in a practical
12 manner and without producing chemical residues. This technique should enable the
13 development of management strategies for intensification of pasture use. However, spectral
14 analysis performed in the laboratory may be affected by the deterioration of plant material
15 during transport from the field to the lab, so storage methods are necessary. This research
16 aimed to evaluate the effects of different storage methods on the spectral response of
17 Mombasa grass leaves. Three methods were evaluated: (i) artificially refrigerated
18 environment, (ii) humid environment, and (iii) without microenvironment control. These
19 methods were tested in five different storage times: 2 hours, 4 hours, 8 hours, 24 hours and 48
20 hours. The spectral behavior of the leaves still inserted in the plant was used as a quality
21 reference. Results showed notable changes at the earliest storage time for the treatment
22 without microenvironment control. Both methods with microenvironment control stabilized

^{1*}Universidade de São Paulo, Escola Superior de Agricultura “Luiz de Queiroz”, Departamento de Engenharia de Biosistemas, CEP 13418–900, Piracicaba, SP, Brasil. E-mail: fiorio@usp.br. Autor para correspondência.

²Instituto Nacional de Pesquisas Espaciais (INPE), Departamento de Sensoriamento Remoto, São José dos Campos, SP, Brasil.

³Universidade Federal de Uberlândia, Campus de Monte Carmelo, Monte Carmelo, Minas Gerais, Brasil.

1 the occurrence of spectral changes over 48 hours of the samples storage, thus both were
2 suggested for this species.

3 **Key words:** diffuse reflectance spectroscopy, hyperspectral sensors, forage, precision
4 agriculture.

5

6 **RESUMO**

7 Espectros de reflectância vis-NIR-SWIR de amostras foliares, coletados em laboratório,
8 permitem a calibração de modelos preditivos para quantificação de seus atributos físico-
9 químicos de maneira prática e sem produção de resíduos químicos. Esta técnica permite o
10 desenvolvimento de estratégias de manejo para a intensificação do uso de pastagens. Contudo,
11 análises espectrais realizadas em laboratório podem ser afetadas pela deterioração do material
12 vegetal durante o transporte do campo ao laboratório, fazendo-se necessário a utilização de
13 métodos de armazenamento. O presente trabalho objetivou avaliar o efeito de diferentes
14 métodos de armazenamento na resposta espectral de folhas de capim Mombaça. Avaliou-se
15 três métodos: (i) ambiente refrigerado artificialmente; (ii) ambiente úmido; e (iii) ao ar livre,
16 sem controle do microambiente; assim como, cinco diferentes tempos de armazenamento: 2
17 horas, 4 horas, 8 horas, 24 horas e 48 horas. O comportamento espectral das folhas ainda
18 inseridas na planta foi utilizado como referência de qualidade. Os resultados mostraram
19 alterações pronunciadas para o armazenamento ao ar livre já nos primeiros intervalos de
20 tempo. Ambos métodos com controle de microambiente permitiram estabilizar a ocorrência
21 de alterações espectrais ao longo das 48h de armazenamento das amostras, sendo ambos
22 sugeridos para esta espécie.

23 **Palavras-chave:** espectroscopia de reflectância difusa, sensores hiperespectrais, forragem,
24 agricultura de precisão.

25

1 INTRODUCTION

2 The Brazilian territory is occupied by 160 million hectares of pasture (PARENTE &
3 FERREIRA, 2018), which is mostly used in extensive livestock. This production system is
4 characterized by low land-use efficiency with low rates of stocking density (RESTLE et al.,
5 1998), which is estimated by 1.32 animals per hectare (IBGE, 2017; ABIEC, 2018). The
6 higher the animal stocking rate, the more efficient the production system is. This
7 intensification is made possible mainly by the use of adequate forage plants with a high
8 production capacity of dry matter and nutritional quality (DIAS-FILHO, 2014). The Panicum
9 maximum cv. Mombasa is one of the most used forages in livestock production systems in
10 Brazil (FREITAS et al., 2012; CARVALHO et al., 2017), which is characterized by high
11 potential productivity and quality (DE ALENCAR et al., 2010). In addition, Precision
12 Agriculture (PA) approaches to site-specific grazing had been suggested for optimized pasture
13 management (SCHELLBERG et al., 2008).

14 In the PA context, remote sensing techniques are applied as an alternative to
15 increasing the density of spatial information (MOLIN et al., 2015) allowing more detailed
16 mapping and thus avoiding extra costs with sample analyses in traditional laboratories.
17 Predicting physicochemical attributes of forages by diffuse reflectance sensors was proposed
18 as an alternative for mapping its agronomic attributes in a practical way (ZHAO et al., 2007;
19 PULLANAGARI et al., 2011, 2012). In this context, most researches that focused on
20 vegetation assessment via diffuse reflectance spectroscopy (DRS) used spectral information in
21 the visible region (vis: 350 a 700 nm), near-infrared (NIR: 700 a 1000 nm) and short-wave
22 infrared (SWIR: 1000 a 2500 nm) (THENKABAIL et al., 2000).

23 Using DRS to analyze leaves in laboratory conditions allows acquisition of spectra
24 without canopy effects, presenting better characterization of chemical constituents, such as
25 protein concentration, cellulose, lignin, starch, chlorophyll and others (ASNER et al., 1998;

1 NETO et al., 2017). Recent advances in spectrometers of DRS vis-NIR-SWIR expanded the
2 use of portable instruments with reduced weight and size (GAŁUSZKA et al., 2015). These
3 advances are popularizing the DRS as a complementary method to the traditional laboratory
4 analyses; some studies already mention its use associated with traditional methods, suggesting
5 the concept of hybrid laboratory (DEMATTE et al., 2019).

6 *In situ* spectral measurements of leaves are not always viable due to the difficulty of
7 controlling illumination conditions and lack of access with portable spectrometers (FOLEY et
8 al., 2006). Therefore, samples are collected in the field, stored and transported to a controlled
9 environment (spectral analysis laboratory) where measurements can be performed. The main
10 limitation of this approach is the possibility of leaf spectral response alteration. These
11 alterations can be caused by loss of water content, degradation of leaf structures, and
12 biochemical alterations (HUNT & ROCK, 1989; WONG & GAMON et al., 2015). Therefore,
13 it is important to adopt storage methods that preserve characteristics of the plant material
14 (LEE et al., 2014a), under the risk of compromising spectral measurements in case that this
15 procedure is overlooked. One of the main objectives of storage methods is to maintain the
16 water content of leaves (FOLEY et al., 2006). Thus, it is recommended to use methods that
17 maintain the microenvironment moist and thus reducing leaf dehydration (SOUSA et al.,
18 1996), or methods that artificially reduce the temperature of the microenvironment reducing
19 leaf transpiration and metabolism (DAUGHTRY & BIEHL, 1985; SIMS & GAMON, 2003;
20 LEE et al. 2014b).

21 Researches that analyzed the spectral response of leaves along time (SANCHES et
22 al. 2003, SCHUH et al. 2016) and in different storage procedures (DAUGHTRY & BIEHL
23 1985, SOUSA et al. 1996, FOLEY et al. 2006, LEE et al. 2014b) presented distinct results
24 based on plant species and adopted methodology. These researches indicated the need to
25 conduct new experiments for different plant species. It should also be noted that, so far, no

1 studies have been developed for *Panicum maximum* cv. Mombasa leaves; thus, it is necessary
2 to extrapolate information generated for other species, which may not be compatible. Besides
3 that, the adoption of PA techniques in Brazil has recently increased (MOLIN, 2017), and is
4 expected to expand to pasture management (BOGREKCI & LEE, 2005; PULLANAGARI et
5 al., 2012; ZHAO et al., 2007).

6 Given the potential for application of sensing techniques in tropical forages and the
7 lack of consensus over a standard method for storing leaf samples for spectral measurements,
8 this research aimed to (i) define the most suited methodology to minimize time effects when
9 storing Mombasa leaf samples, and (ii) estimate the maximum storage time in which the
10 spectral response of the collected sample will not alter significantly.

11

12 **MATERIALS AND METHODS**

13 The fieldwork started with selecting 15 leaves of *Panicum maximum* (cv. Mombasa)
14 in three experimental plots with homogeneous conditions of soil, fertilizer, management, and
15 irrigation. The sampling was made by extracting the medium third of the leaf “+1”, which is
16 the first leaf presenting a visible intersection between the leaf blade and the leaf sheath. The
17 leaf spectra were measured before extracting the leaves showing no symptoms of stress. This
18 first spectral measurement (T0) was used as a reference for comparison with other
19 measurements obtained along the storage procedures. The field experiments were performed
20 between 8 and 9 AM with air temperature and humidity of 23 °C and 82.9 %, respectively.

21 Shortly after the first spectral measurement, the leaves were detached and submitted
22 to three different storage methods; the samples of the same experimental plot were assigned to
23 a given storage method. The storage methods were: (i) storage in translucent plastic bags kept
24 open and stored in a thermal box with ice, keeping the leaves out of direct contact with ice
25 (G) (LEE et al., 2014a); (ii) storage in sealed translucent plastic bags with moist cotton

1 fragments and stored in a thermal box (A) (SOUSA et al., 1996); and (iii) samples kept in
2 open-air condition throughout the experiment without any microenvironmental control (AL).
3 In the laboratory, the spectra of each sample were measured after five different storage
4 periods using the moment of leaf abscission as a reference. The storage periods were: 2 hours
5 (T2), 4 hours (T4), 8 hours (T8), 24 hours (T24) e 48 hours (T48). The T2 interval was
6 defined as the minimum time required for sample collection and transport to the laboratory for
7 spectral analysis.

8

9 *Spectral measurements*

10 The measurements were taken using the spectroradiometer FieldSpec 3® (ASD -
11 Analytical Spectral Devices, Boulder, EUA) (Figure 1A) coupled with the peripheral device
12 LeafClip (Figure 1B). The LeafClip is a contact probe used specifically for vegetation
13 analysis, using a halogen lamp as a source of electromagnetic radiation and enabling spectral
14 analysis in field and laboratory environments. The FieldSpec 3 is a hyperspectral sensor that
15 measures radiance in the vis-NIR-SWIR regions. It presents a spectral resolution of 3 nm in
16 the region from 350 to 1000 nm and of 10 nm between 1000 and 2500 nm.

17 Sensor calibration was performed at the beginning of each data collection and
18 repeated every 30 leaves. For this procedure, the reflectance standard Spectralon® (Labsphere
19 Inc, North Sutton, EUA) was used as a reference; it is coupled to LeafClip, providing a
20 diffuse reflectance close to 100% for the analyzed spectral region. The reflectance curve of
21 each sample was obtained by averaging 30 measurements taken automatically by the sensor.

22

23 *Data analysis*

24 The reflectance curves were qualitatively evaluated by descriptive analysis following
25 a methodology adapted from DEMATTÊ et al. (2014). The descriptive analysis evaluates the

1 spectra at its intensity, shape and absorption features. Principal component analysis (PCA)
2 was also applied to reduce data dimensionality, allowing to evaluate the treatment effects
3 more clearly (VISCARRA ROSSEL & BEHRENS, 2010; DEMATTÊ et al., 2016). This
4 technique helps to reduce the high collinearity present in the spectral data, which provides an
5 excessive amount of redundant information (VISCARRA ROSSEL & BEHRENS, 2010).

6 In spectral data, the PCA allows identifying possible groupings or classes of samples
7 according to their spectral similarity. This is evaluated by the proximity between scores of the
8 generated components (DEMATTÊ et al., 2016). Analyses were applied separately for each
9 spectral range (vis, NIR, and SWIR) and for the entire spectrum using Unscrambler 9.7
10 software (CAMO AS, Trondheim, Norway). Data from 350 to 419 nm were excluded from
11 analysis due to the presence of noise.

12 The storage methods were evaluated by observing the reflectance deviation in
13 relation to the T0 spectrum. The deviation was calculated to compensate for the effect of the
14 experimental plots on the storage method. This was essential since even with the rigorous
15 selection of homogeneous plots, as well as the calibration and spectral data collection
16 procedures, there still was a significant difference between the T0 spectra of the different
17 plots (Table 1).

18 After this compensation, the effect of the treatments was evaluated in seven different
19 spectral bands (SOUSA et al., 1996). These spectral bands were centered at the main spectral
20 features of vegetation (CURRAN, 1989). Three bands were positioned in the visible region
21 (centered at 480, 550 and 670 nm), related to the absorption of electromagnetic radiation by
22 leaf pigments: two in the NIR region (centered at 740 and 910 nm), related to cell structure;
23 and two in the SWIR region (centered at 1450 and 1940 nm), related to absorption due to leaf
24 water content (FOLEY, et al. 2006; JENSEN, 2009). We used a range from ± 10 nm in
25 relation to the central wavelength. Variance analysis, Tukey test and regression analysis

1 (linear and quadratic models) were applied to the data; p-value less than 5% was considered
2 significant.

3

4 **RESULTS AND DISCUSSION**

5 The descriptive analysis of the spectra showed that treatments G and A (Figure 2A
6 and B, respectively) presented less dispersion of the reflectance values over time compared to
7 those of the AL treatment (Figure 3C). The dispersion observed in the AL treatment is evident
8 for the NIR (mainly after 740 nm) and SWIR region, which showed an increasing albedo as
9 the storage time rises. All spectra of the G and A treatments, as well as the visible region (up
10 to 700 nm) of the AL treatment, showed greater spectral stability over time. Only slight
11 variations can be observed in these spectra; however, they are presented in a random way,
12 without presenting any relation with the storage time.

13 The spectral behavior of the AL treatment (Figure 3C), characterized by progressive
14 increases in reflectance intensity as a function of the storage period, can be attributed to leaf
15 water loss during sample storage (HUNT & ROCK, 1989; FOLEY et al., 2006). The water
16 has the property to absorb the radiation. The radiation absorption caused by the leaf water
17 content increases as the wavelength increases, being smoother in the visible region, and
18 intensifying in the NIR and the SWIR regions (WOOLLEY, 1971; CARTER, 1991).

19 In addition to the effect on the albedo, the spectra obtained after 24 and 48 hours in
20 the open-air storage condition (T24 and T48 of Figure 2C) were distinguished from the others
21 by the presence of new spectral features. This more complex shape happens due to the
22 attenuation of water absorption bands, located near 1190, 1450 and 2300 nm (SIMS &
23 GAMON, 2003; FOLEY et al., 2006), which masked the features related to the protein,
24 nitrogen and cellulose content, near 2020, 2220 and 2395 nm (CURRAN, 1989). In these
25 same spectra, as illustrated by the red arrows in Figure 3C, it was observed that the angle

1 formed between the inflection range (740 nm) and the beginning of the near-infrared (910
2 nm) increase. The spectral range from 740 to 800 nm is a region related to the emission of
3 fluorescence by photosynthesizing agents for dissipation the excess of absorbed energy
4 (GAMON & SURFUS, 1999). Changes in fluorescence characteristics over time are related to
5 changes in the leaf photochemical activity (FOLEY, et al. 2006). According to GHOBADI et
6 al. (2013) plants under water stress are also affected by secondary damage caused by
7 oxidative stresses, which is harmful to lipids, proteins, and nucleic acids, leading to harmful
8 effects such as chlorophyll degradation. The interpretation of vis-NIR-SWIR spectra is
9 dynamic since their features are characterized by being broad, subtle and with some overlaps
10 of absorptions (e.g., water feature attenuating and masking features of proteins, cellulose,
11 among others) (WOOLLEY, 1971). Besides that, the leaf degradation, which generally alters
12 the leaf constituents, is easily observed by qualitative evaluations of the spectrum.

13 The comparative results between the storage methods of the seven selected spectral
14 bands are presented in Table 2. The visible ranges (480, 550 and 670 nm) and the first NIR
15 range (740 nm), which are less influenced by the water content, showed a greater similarity
16 between the three methods for all different storage periods. In general, only observing the
17 range of 910 nm (NIR) and the SWIR ranges (1450 and 1940 nm), it is possible to verify a
18 distinction of the AL treatment in relation to the others, with significant deviations of
19 reflectance, mainly after 24 hours of storage. However, among the G and A treatments, it is
20 not possible to observe a clear statistical behavior that differentiates the performance of both,
21 which, in turn, would allow defining the best storage method. Corroborating with this
22 analysis, neither of these two methods presented regression analyses with significant
23 behavior, showing the absence of the time effect on the reflectance. Conversely, the
24 regression analyses were significant for the AL method in the bands centered at 910, 1450 and
25 1940 nm, wavelengths that clearly showed gain of reflectance over the storage periods.

1 Concerning the principal components analysis, PC1 and 2 were responsible for
2 explaining more than 90% of the total data variance. The scatter plots of the scores of these
3 two components allowed grouping similar treatments based on their spectral similarity
4 (Figure 3 A, B, C, and D); and this analysis confirms what was observed in the individual
5 evaluation of the bands. The visible region did not show clusters between the different
6 treatments (Figure 3B), indicating the low spectral variability in this region. Conversely,
7 when evaluating the scores generated for the entire spectrum and for the NIR and SWIR
8 regions (Figure 3A, C and D, respectively), the separation of the AL treatment from T2 is
9 clear, with an emphasis on T24 and T48 (indicated by red ellipses - Figure 3A, B and C). This
10 behavior highlights the greater sensitivity of the NIR and SWIR regions for the treatments
11 applied, and a reduced sensitivity of the visible region. This also highlights the spectral
12 degradation of the AL treatment, as well as the spectral similarity of the G and A treatments
13 for all storage periods.

14 Regarding the maximum storage time, the Tukey test between the reflectance of T0 and
15 T2 (Table 3) shows that changes in reflectance values were already observed on T2, the first
16 spectral measurement after in situ data collection. This result showed that spectral changes in
17 Mombasa grass leaf samples occurred within the first two hours of storage.

18 Although, a significant change in reflectance values was observed in the first two
19 hours of storage, treatments G and A did not present drastic changes, as occurred in AL. For
20 the samples stored using microenvironment control (G and A), the greatest variations
21 occurred in the first 4 hours of storage, with a tendency to stabilize the reflectance after 8
22 hours of storage (Table 2).

23 The maximum storage period varies between methods and species. LEE et al.
24 (2014b) observed that cotton and soybean leaves stored using ice had their integrity
25 prolonged; however, at 30 minutes after their cutting there was a slight mischaracterization of

1 the spectral response. Analyzing birch leaves, DAUGHTRY & BIEHL (1985) concluded that
2 such leaves could be stored in a cold environment for several days without compromising the
3 spectrum since they presented variations of less than 5% in relation to their initial state. In
4 turn, SOUSA et al. (1996), analyzing eucalyptus leaves, observed the first significant changes
5 in their spectral response, stored together with wet cotton, occurred after 6 hours.

6 It is believed that the maximum storage time for leaf samples of Mombasa grass
7 should be within the first two hours after leaf abscission. However, collecting, storing,
8 transporting and analyzing within this interval of time is, in practice, not feasible. Thus,
9 approaches that involve the calibration of predictive models in green leaves of Mombasa
10 grass, with spectral acquisition performed in the laboratory, should take into account this
11 storage effect. To reduce the random error due to the transport of foliar samples from the field
12 to the laboratory, we suggest standardizing the method and the period of storage. Although,
13 both methods with microenvironment control (G and A) did not allow preserving the spectral
14 characteristics of the leaf still inserted in the plant, they stabilized these changes over 48 hours
15 of storage, for all spectral regions.

16

17 **CONCLUSION**

18 In order to transport leaf samples of *Panicum maximum* (cv. Mombasa) for spectral
19 analysis, two methods with microenvironment control were tested and reported equally
20 efficient and superior to open-air storage, allowing to stabilize reflectance values up to 48
21 hours.

22 In all storage methods tested, we observed slight spectral changes immediately after the
23 first interval of time evaluated (2 hours after leaf abscission); this did not allow determining
24 the maximum storage time for leaf samples in which the Mombasa grass would maintain its
25 original spectral characteristics.

1 **ACKNOWLEDGEMENTS (required)**

2 The T.R.T. was partial funded by the Brazilian Federal Agencies: “Coordenação de
3 Aperfeiçoamento de Pessoal de Nível Superior” (CAPES), Brazil – Finance Code 001, and by
4 the “Conselho Nacional de Desenvolvimento Científico e Tecnológico” (CNPq), Brazil. We
5 would also like to thank the “Fundação de Amparo e Pesquisa do Estado de São Paulo”
6 (FAPESP), for funding the research project no. 2013/22435-9, which this research is part of.

7

8 **DECLARATION OF CONFLICT OF INTEREST (required)**

9 The authors declare no conflict of interest. The founding sponsors had no role in the design of
10 the study; in the collection, analyses, or interpretation of data; in the writing of the
11 manuscript, and in the decision to publish the results.

12 **Other options:**

13 *We have no conflict of interest to declare.*

14 *We have a competing interest to declare (please fill in).*

15

16 **AUTHORS' CONTRIBUTIONS (required)**

17 All authors contributed equally for the conception and writing of the manuscript. All authors
18 critically revised the manuscript and approved of the final version.

19

20 **BIOETHICS AND BIOSSECURITY COMMITTEE APPROVAL (Required when
21 animals and genetically modified organisms are involved)**

22

23 **REFERENCES**

24 **Standard Journal Article**

25 **Author should add the URL to the reference and the number of identification DOI (Digital
26 Object Identifier) as the example below:**

1 MEWIS, I.; ULRICH, CH. Action of amorphous diatomaceous earth against different stages of
2 the stored product pests *Tribolium confusum* (Coleoptera: Tenebrionidae), *Tenebrio*
3 *molitor* (Coleoptera: Tenebrionidae), *Sitophilus granarius* (Coleoptera: Curculionidae)
4 and *Plodia interpunctella* (Lepidoptera: Pyralidae). **Journal of Stored Product Research**,
5 Amsterdam (City optional), v.37, p.153-164, 2001. Available from:
6 <[http://dx.doi.org/10.1016/S0022-474X\(00\)00016-3](http://dx.doi.org/10.1016/S0022-474X(00)00016-3)>. Accessed: nov. 20, 2008. doi:
7 10.1016/S0022-474X(00)00016-3.

8

10 PINTO JUNIOR, A.R. et al (Two authors or more). Response of *Sitophilus*
11 *oryzae* (L.), *Cryptolestes ferrugineus* (Stephens) and *Oryzaephilus surinamensis* (L.) to
12 different concentrations of diatomaceous earth in bulk stored wheat. **Ciência Rural**, Santa
13 Maria (City optional), v. 38, n. 8, p.2103-2108, nov. 2008 . Available from:
14 <[http://www.scielo.br/scielo.php?script=sci_arttext&pid=S0103-](http://www.scielo.br/scielo.php?script=sci_arttext&pid=S0103-84782008000800002&lng=pt&nrm=iso)
15 [84782008000800002&lng=pt&nrm=iso](http://www.scielo.br/scielo.php?script=sci_arttext&pid=S0103-84782008000800002&lng=pt&nrm=iso)>. Accessed: nov 12, 2008. doi: 10.1590/S0103-
16 84782008000800002.

17

18
19 SENA, D. A. et al. Vigor tests to evaluate the physiological quality of corn seeds cv.
20 'Sertanejo'. **Ciência Rural**, Santa Maria , v. 47, n. 3, e20150705, 2017 . Available from:
21 <[http://www.scielo.br/scielo.php?script=sci_arttext&pid=S0103-](http://www.scielo.br/scielo.php?script=sci_arttext&pid=S0103-84782017000300151&lng=pt&nrm=iso)
22 [84782017000300151&lng=pt&nrm=iso](http://www.scielo.br/scielo.php?script=sci_arttext&pid=S0103-84782017000300151&lng=pt&nrm=iso)>. Accessed: Mar. 18, 2017. Epub 15-Dez-2016. doi:
23 10.1590/0103-8478cr20150705. (Electronic publication).

24

25 ASNER, G. P. Biophysical and biochemical sources of variability in canopy reflectance.
26 **Remote sensing of Environment**, v. 64, n. 3, p. 234-253, 1998. Available from:
27 <[https://doi.org/10.1016/S0034-4257\(98\)00014-5](https://doi.org/10.1016/S0034-4257(98)00014-5)>. Accessed: jul 10, 2019. doi:
28 10.1016/S0034-4257(98)00014-5.

29 ASSOCIAÇÃO BRASILEIRA DAS INDÚSTRIAS EXPORTADORAS DE CARNE
30 (ABIEC). Perfil da pecuária no Brasil, 2018. Available from:
31 <<http://www.abiec.com.br/control/uploads/arquivos/sumario2019portugues.pdf>>. Accessed:
32 Oct. 24, 2019.

33 BOGREKCI, I.; LEE, W. S. Spectral phosphorus mapping using diffuse reflectance of soils
34 and grass. **Biosystems Engineering**, v. 91, n. 3, p. 305-312, 2005. Available from:
35 <<https://doi.org/10.1016/j.biosystemseng.2005.04.015>>. Accessed: Jul. 10, 2019. doi:
36 10.1016/j.biosystemseng.2005.04.015.

1 CARTER, Gregory A. Primary and secondary effects of water content on the spectral
2 reflectance of leaves. **American Journal of Botany**, v. 78, n. 7, p. 916-924, 1991. Available
3 from: <<https://doi.org/10.1002/j.1537-2197.1991.tb14495>>. Accessed: Jul. 10, 2019.
4 doi:10.1002/j.1537-2197.1991.tb14495.

5 CARVALHO, A. L. S. et al. Production and quality of Mombaça grass forage under different
6 residual heights. **Acta Scientiarum. Animal Science**, v. 39, n. 2, p. 143-148, 2017. Available
7 from: <<http://dx.doi.org/10.4025/actascianimsci.v39i2.34599>>. Accessed: Jul. 10, 2019. doi:
8 10.4025/actascianimsci.v39i2.34599.

9 CURRAN, P. J. Remote sensing of foliar chemistry. **Remote sensing of environment**, v. 30,
10 n. 3, p. 271-278, 1989. Available from: <[https://doi.org/10.1016/0034-4257\(89\)90069-2](https://doi.org/10.1016/0034-4257(89)90069-2)>.
11 Accessed: Jul. 10, 2019. doi: 10.1016/0034-4257(89)90069-2.

12 DAUGHTRY, C. S. T.; BIEHL, L. L. Changes in spectral properties of detached birch leaves.
13 **Remote Sensing of Environment**, v. 17, n. 3, p. 281-289, 1985. Available from:
14 <[https://doi.org/10.1016/0034-4257\(85\)90100-2](https://doi.org/10.1016/0034-4257(85)90100-2)>. Accessed: Jul. 10, 2019. doi:
15 10.1016/0034-4257(85)90100-2.

16 DE ALENCAR, C. A. B. et al. Grass height and soil cover under nitrogen fertilization,
17 irrigation and grazing during the seasons of the year. **Acta Scientiarum. Agronomy**, v. 32, n.
18 1, p. 21-27, 2010. Available from:
19 <<http://dx.doi.org/10.4025/actasciagron.v32i1.31910.4025/actasciagron.v32i1.319>>.
20 Accessed: Jul. 10, 2019. doi: 10.4025/actasciagron.v32i1.319.

21 DEMATTÊ, J. A. M. et al. Morphological Interpretation of Reflectance Spectrum (MIRS)
22 using libraries looking towards soil classification. **Scientia Agricola**, v. 71, n. 6, p. 509-520,
23 2014. Available from: <<http://dx.doi.org/10.1590/0103-9016-2013-0365>>. Accessed: Jul. 10,
24 2019. doi: 10.1590/0103-9016-2013-0365.

1 DEMATTÊ, J. A. M. et al. Soil chemical alteration due to slaughterhouse waste application as
2 identified by spectral reflectance in São Paulo State, Brazil: an environmental monitoring
3 useful tool. **Environmental Earth Sciences**, v. 75, n. 18, p. 1277, 2016. Available from:
4 <<http://dx.doi.org/10.1590/0103-9016-2013-0365>>. Accessed: Jul. 10, 2019. doi:
5 10.1590/0103-9016-2013-0365.

6 DEMATTÊ, J. A. M. et al. Soil analytical quality control by traditional and spectroscopy
7 techniques: Constructing the future of a hybrid laboratory for low environmental impact.
8 **Geoderma**, v. 337, p. 111-121, 2019. Available from:
9 <<https://doi.org/10.1016/j.geoderma.2018.09.010>>. Accessed: Jul. 10, 2019. doi:
10 10.1016/j.geoderma.2018.09.010.

11 DIAS-FILHO, M. B. Diagnóstico das pastagens no Brasil. **Embrapa Amazônia Oriental-**
12 **Documentos**, 2014. Available from:
13 <<https://www.infoteca.cnptia.embrapa.br/bitstream/doc/986147/1/DOC402.pdf>>. Accessed:
14 Jul. 28, 2019.

15 IBGE - Instituto Brasileiro de Geografia e Estatística. Censo agropecuário 2017. Resultados
16 preliminares. **Censo agropec.**, Rio de Janeiro, v. 7, p.1-108, 2017. Available from:
17 <<https://censos.ibge.gov.br/agro/2017>>. Accessed: Jul. 28, 2019.

18 FOLEY, S. et al. Foliar spectral properties following leaf clipping and implications for
19 handling techniques. **Remote Sensing of Environment**, v. 103, n. 3, p. 265-275, 2006.
20 Available from: <<https://doi.org/10.1016/j.rse.2005.06.014>>. Accessed: Jul. 10, 2019. doi:
21 10.1016/j.rse.2005.06.014.

22 FREITAS, F. P., et al. Forage yield and nutritive value of Tanzania grass under nitrogen
23 supplies and plant densities. **Revista Brasileira de Zootecnia**, v. 41, n. 4, p. 864-872, 2012.
24 Available from: <<http://dx.doi.org/10.1590/S1516-35982012000400006>>. Accessed: Jul. 10,

1 2019. doi: 10.1590/S1516-35982012000400006.

2 GAŁUSZKA, A., et al. Moving your laboratories to the field—Advantages and limitations of
3 the use of field portable instruments in environmental sample analysis. **Environmental**
4 **research**, v. 140, p. 593-603, 2015. Available from:
5 <<https://doi.org/10.1016/j.envres.2015.05.017>>. Accessed: Jul. 10, 2019. doi:
6 10.1016/j.envres.2015.05.017.

7 GAMON, J. A.; SURFUS, J. S. Assessing leaf pigment content and activity with a
8 reflectometer. **The New Phytologist**, v. 143, n. 1, p. 105-117, 1999. Available from:
9 <<https://doi.org/10.1046/j.1469-8137.1999.00424.x>>. Accessed: Jul. 10, 2019. doi:
10 10.1046/j.1469-8137.1999.00424.x.

11 GHOBADI, M., et al. Antioxidant capacity, photosynthetic characteristics and water relations
12 of sunflower (*Helianthus annuus* L.) cultivars in response to drought stress. **Industrial Crops**
13 **and Products**, v. 50, p. 29-38, 2013. Available from:
14 <<https://doi.org/10.1016/j.indcrop.2013.07.009>>. Accessed: Jul. 10, 2019. doi:
15 10.1016/j.indcrop.2013.07.009.

16 HUNT JR, E. R.; ROCK, Barrett N. Detection of changes in leaf water content using near-and
17 middle-infrared reflectances. **Remote sensing of environment**, v. 30, n. 1, p. 43-54, 1989.
18 Available from: <[https://doi.org/10.1016/0034-4257\(89\)90046-1](https://doi.org/10.1016/0034-4257(89)90046-1)>. Accessed: Jul. 10, 2019.
19 doi: 10.1016/0034-4257(89)90046-1.

20 JENSEN, J. R. Remote sensing of the environment: An earth resource perspective. Pearson
21 Education India, 2009.

22 LEE, M. A., et al. Effects of sample storage on spectral reflectance changes in corn leaves
23 excised from the field. **Journal of Agricultural Science**, v. 6, n. 8, p. 214, 2014a. Available
24 from: <<http://dx.doi.org/10.5539/jas.v6n8p214>>. Accessed: Jul. 10, 2019. doi:

1 10.5539/jas.v6n8p214.

2 LEE, M. A., et al. Determining the effects of storage on cotton and soybean leaf samples for
3 hyperspectral analysis. **IEEE Journal of Selected Topics in Applied Earth Observations**
4 **and Remote Sensing**, v. 7, n. 6, p. 2562-2570, 2014b. Available from:
5 <<https://ieeexplore.ieee.org/document/6866126>>. Accessed: Jul. 10, 2019. doi:
6 10.1109/JSTARS.2014.2330521.

7 MOLIN J. P., et al. Agricultura de precisão. São Paulo, Oficina de Textos, 2015. 238p.

8 MOLIN J. P., Agricultura de precisão: números do mercado brasileiro. Boletim Técnico 03.
9 2017. Available from: <http://www.agriculturadeprecisao.org.br/upimg/publicacoes/pub_-
10 [boletim-tecnico-03---agricultura-de-precisao-numeros-do-mercado-brasileiro-11-04-](http://www.agriculturadeprecisao.org.br/upimg/publicacoes/pub_-boletim-tecnico-03---agricultura-de-precisao-numeros-do-mercado-brasileiro-11-04-2017.pdf)
11 [2017.pdf](http://www.agriculturadeprecisao.org.br/upimg/publicacoes/pub_-boletim-tecnico-03---agricultura-de-precisao-numeros-do-mercado-brasileiro-11-04-2017.pdf)>. Accessed: Jul. 28, 2019.

12 NETO, A. J. S. et al., Vis/NIR spectroscopy and chemometrics for non-destructive estimation
13 of water and chlorophyll status in sunflower leaves. **Biosystems engineering**, v. 155, p. 124-
14 133, 2017. Available from: <<https://doi.org/10.1016/j.biosystemseng.2016.12.008>>.
15 Accessed: Jul. 10, 2019. doi: 10.1016/j.biosystemseng.2016.12.008.

16 PARENTE, L.; FERREIRA, L. Assessing the spatial and occupation dynamics of the
17 Brazilian pasturelands based on the automated classification of MODIS Images from 2000 to
18 2016. **Remote Sensing**, v. 10, p. 1-14, 2018. Available from:
19 <<https://doi.org/10.3390/rs10040606>>. Accessed: Jul. 10, 2019. doi: 10.3390/rs10040606.

20 PULLANAGARI, R. R., et al. The use of optical sensors to estimate pasture quality.
21 **International Journal on Smart Sensing and Intelligent Systems**, v. 4, n. 1, p. 125-137,
22 2011. Available from: <<https://doi.org/10.21307/ijssis-2017-430>>. Accessed: Jul. 10, 2019.
23 doi: 10.21307/ijssis-2017-430.

24 PULLANAGARI, R. R., et al. In-field hyperspectral proximal sensing for estimating quality

1 parameters of mixed pasture. **Precision Agriculture**, v. 13, n. 3, p. 351-369, 2012. Available
2 from: <<https://doi.org/10.1007/s11119-011-9251-4>>. Accessed: Jul. 10, 2019. doi:
3 10.1007/s11119-011-9251-4.

4 RESTLE, J., et al. Efficiency and performance of categories of beef cattle in cultivated
5 pasture. **Revista Brasileira de Zootecnia**, v. 27, n. 2, p. 397-404, 1998. Available from:
6 <<http://www.sbz.org.br/revista/artigos/2090.pdf>>. Accessed: Jul. 10, 2019.

7 SANCHES, I. D., et al. Influência do tempo após a coleta de folhas na reflectância e
8 transmitância. In: Simpósio Brasileiro de Sensoriamento Remoto (SBSR), Belo Horizonte,
9 Brasil, abril, 2003. **Anais...** p. 2605-2612, 2003. Available from:
10 <http://marte.sid.inpe.br/col/ltid.inpe.br/sbsr/2002/10.18.15.17/doc/18_019.pdf>. Accessed:
11 Jul. 10, 2019.

12 SCHELLBERG, J., et al. Precision agriculture on grassland: Applications, perspectives and
13 constraints. **European Journal of Agronomy**, v. 29, n. 2-3, p. 59-71, 2008. Available from:
14 <<https://doi.org/10.1016/j.eja.2008.05.005>>. Accessed: Jul. 10, 2019. doi:
15 10.1016/j.eja.2008.05.005.

16 SCHUH, M. S., et al. Análise temporal do vigor vegetativo por meio de espectrorradiometria.
17 **Revista Brasileira de Geografia Física**, v. 9, n. 6, p. 1888–1894, 2016. Available from:
18 <<https://periodicos.ufpe.br/revistas/rbgfe/article/download/233868/27370>>. Accessed: Jul. 10,
19 2019. doi: 10.26848/rbgf.v9.6.p1888-1894.

20 SIMS, D. A.; GAMON, J. A. Estimation of vegetation water content and photosynthetic
21 tissue area from spectral reflectance: a comparison of indices based on liquid water and
22 chlorophyll absorption features. **Remote sensing of environment**, v. 84, n. 4, p. 526-537,
23 2003. Available from: <[https://doi.org/10.1016/S0034-4257\(02\)00151-7](https://doi.org/10.1016/S0034-4257(02)00151-7)>. Accessed: Jul. 10,
24 2019. doi: 10.1016/S0034-4257(02)00151-7.

1 SOUSA, C. L., de et al. Influence of time and type of storage on the spectral reflectance of
2 *Eucalyptus grandis* detached leaves. **Revista Árvore**, v. 20, n. 2, p. 255-265, 1996. Available
3 from: <http://mtc->
4 [m12.sid.inpe.br/col/sid.inpe.br/iris@1912/2005/07.20.06.59/doc/INPE%206155.pdf](http://mtc-m12.sid.inpe.br/col/sid.inpe.br/iris@1912/2005/07.20.06.59/doc/INPE%206155.pdf).
5 Accessed: Jul. 10, 2019.

6 THENKABAIL, P. S., et al. Hyperspectral vegetation indices and their relationships with
7 agricultural crop characteristics. **Remote sensing of Environment**, v. 71, n. 2, p. 158-182,
8 2000. Available from: [https://doi.org/10.1016/S0034-4257\(99\)00067-X](https://doi.org/10.1016/S0034-4257(99)00067-X). Accessed: Jul. 10,
9 2019. doi: 10.1016/S0034-4257(99)00067-X.

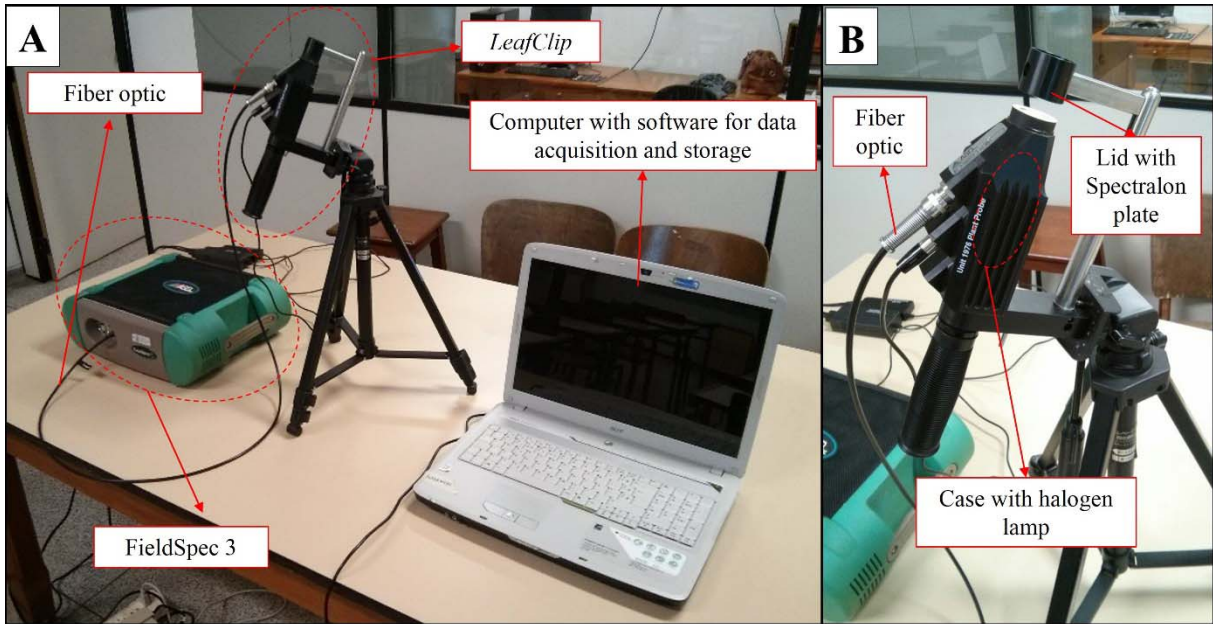
10 VISCARRA ROSSEL, R. A.; BEHRENS, T. Using data mining to model and interpret soil
11 diffuse reflectance spectra. **Geoderma**, v. 158, n. 1-2, p. 46-54, 2010. Available from:
12 <https://doi.org/10.1016/j.geoderma.2009.12.025>. Accessed: Jul. 10, 2019. doi:
13 10.1016/j.geoderma.2009.12.025.

14 WONG, C. Y. S; GAMON, J. A. Three causes of variation in the photochemical reflectance
15 index (PRI) in evergreen conifers. **New Phytologist**, v. 206, n. 1, p. 187-195, 2015. Available
16 from: <https://doi.org/10.1111/nph.13159>. Accessed: Jul. 10, 2019. doi: 10.1111/nph.13159.

17 WOOLLEY, J. T. Reflectance and transmittance of light by leaves. **Plant physiology**, v. 47,
18 n. 5, p. 656-662, 1971 Available from: <https://doi.org/10.1104/pp.47.5.656>. Accessed: Jul.
19 10, 2019. doi: 10.1104/pp.47.5.656.

20 ZHAO, D. et al. Assessment of forage biomass and quality parameters of bermudagrass using
21 proximal sensing of pasture canopy reflectance. **Grassland Science**, v. 53, n. 1, p. 39-49,
22 2007. Available from: <https://doi.org/10.1111/j.1744-697X.2007.00072.x>. Accessed: Jul.
23 10, 2019. doi: 10.1111/j.1744-697X.2007.00072.x.

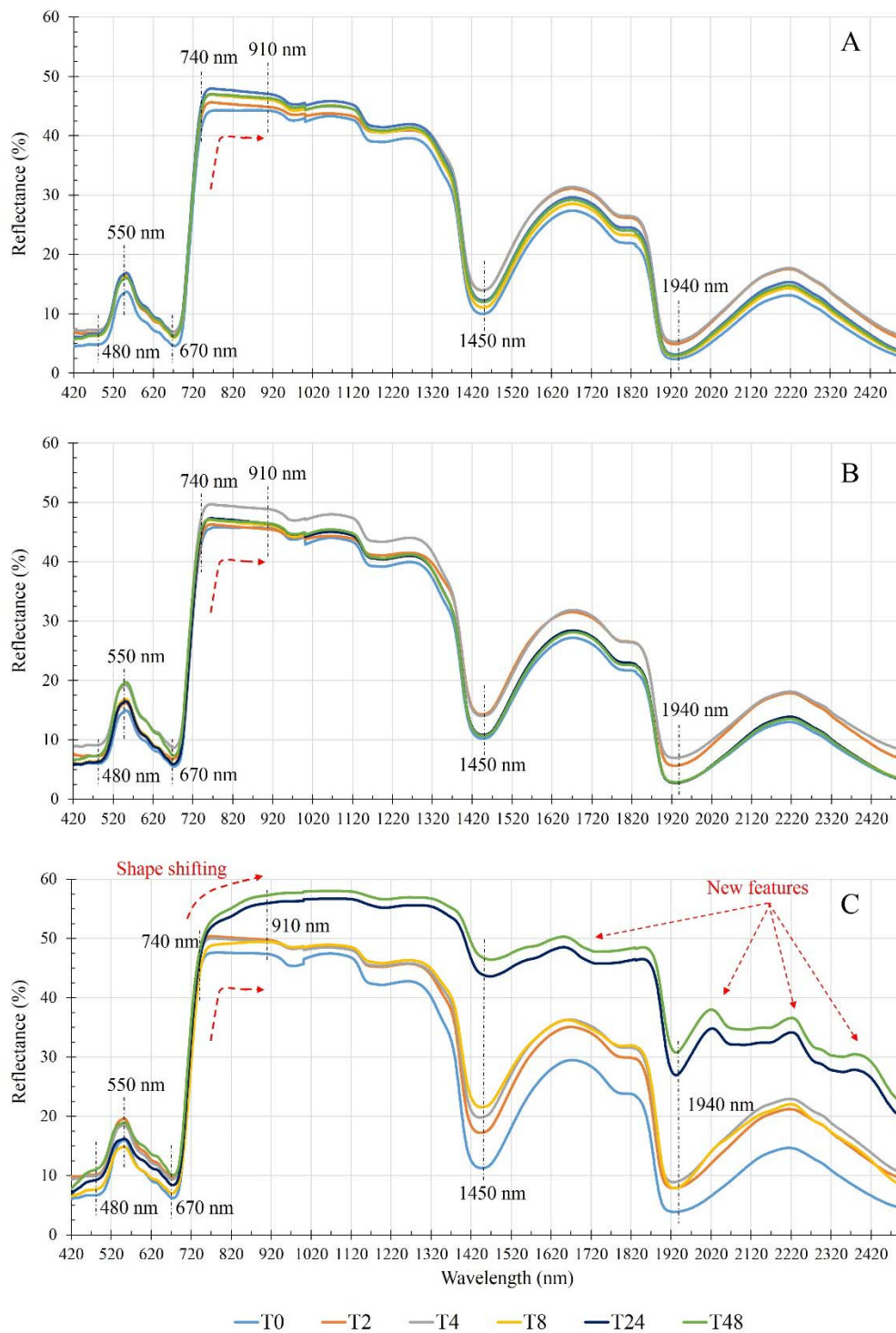
1



2

3 Figure 1 - (A) Set of equipment used: FieldSpec 3, computer and LeafClip; (B) LeafClip in
4 detail.

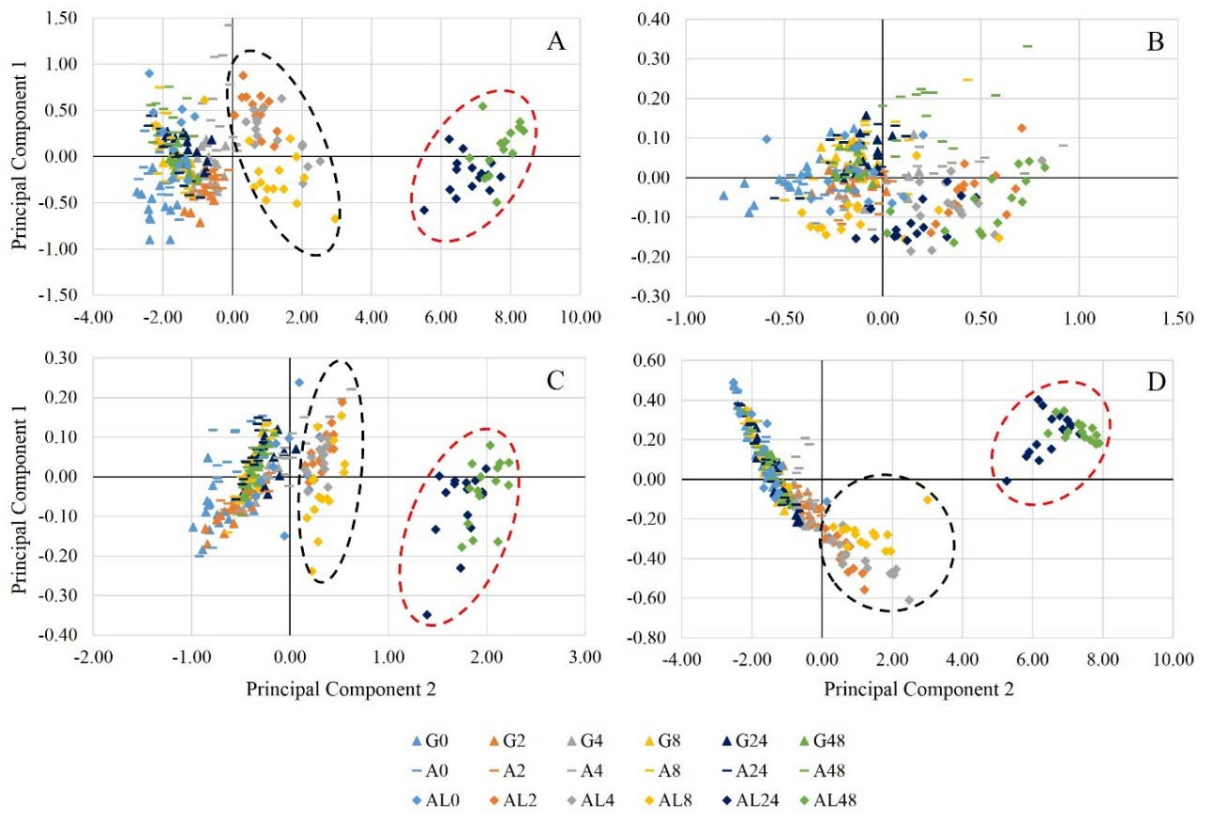
5



1

2 Figure 2 - Spectral curve of the leaf sample still inserted in the plant (T0) and after different
 3 storage period (T2, T4, T8, T24 and T48); this behavior was presented for the three storage
 4 methods evaluated: using ice (A), using wet cotton (B) and open-air, without any
 5 microenvironment control (C).

6



1

2 Figure 3 - Scatter plots of the PC 1 and 2 scores for each treatment. Scatter plots using the
 3 entire spectrum from 420 to 2500 nm (A) and fragmenting the spectrum in the visible region
 4 from 420 to 700 nm (B), in the NIR region from 700 to 1000 nm and in the SWIR region
 5 from 1000 to 2500 nm (D). The ellipses showed groupings of similar spectra.

6

1 Table 1 - Tukey test for the reflectance of the spectral bands obtained at T0, according to the
2 storage method.

Storage method	Center wavelength of the spectral range (nm)						
	480	550	670	740	910	1450	1940
G	4.85 b	13.51 b	4.74 b	40.78 b	44.19 b	10.05 a	2.47 a
A	6.03 a	14.73 ab	5.69 a	42.25 b	45.61 b	10.28 a	2.94 ab
AL	6.70 a	15.84 a	6.38 a	43.8 a	47.37 a	11.31 a	3.95 a

3 Means followed by equal letters (vertical) do not differ statistically from each other by
4 the Tukey test at 5%.

5

1 Table 2 - Average of the reflectance deviation from T0 for the different methods and times of
 2 storage; Tukey test between methods; and regression analysis for the reflectance deviation as
 3 a function of storage period.

Storage method	Storage periods					Linear reg.	Quad. reg.
	T2	T4	T8	T24	T48		
----- 480 nm -----							
G	1.89 b	2.42 a	1.48 a	1.82 a	1.57 b	ns	ns
A	1.24 b	2.90 a	0.39 a	0.23 b	1.32 b	ns	ns
AL	3.47 a	3.28 a	0.98 a	2.56 a	4.32 a	ns	ns
----- 550 nm -----							
G	2.43 ab	3.17 a	2.91 a	3.16 a	2.33 a	ns	ns
A	1.26 b	4.29 a	1.92 a	1.57 ab	4.74 a	ns	ns
AL	3.57 a	2.55 a	-1.11 a	0.22 b	2.97 a	ns	ns
----- 670 nm -----							
G	1.75 b	2.37 a	1.45 a	1.70 a	1.61 b	ns	ns
A	1.26 b	3.15 a	0.49 a	0.38 b	1.88 b	ns	ns
AL	3.42 a	3.13 a	0.81 a	2.20 a	3.94 a	ns	ns
----- 740 nm -----							
G	1.99 ab	3.25 ab	3.27 a	3.88 a	2.87 a	ns	ns
A	0.99 b	4.49 a	1.93 ab	1.99 a	2.62 a	ns	ns
AL	3.10 a	2.23 b	0.62 b	1.96 a	3.47 a	ns	ns
----- 910 nm -----							
G	0.64 b	1.89 a	1.87 ab	2.81 b	2.12 b	ns	ns
A	-0.14 b	3.22 a	0.50 b	0.80 c	0.84 b	ns	ns
AL	2.40 a	2.12 a	2.06 a	8.59 a	9.93 a	<0.01	<0.01
----- 1450 nm -----							
G	3.96 b	4.00 b	1.07 b	2.25 b	1.98 b	ns	ns
A	4.07 b	3.82 b	0.48 b	0.59 b	0.44 b	ns	ns
AL	6.00 a	8.60 a	10.30 a	32.57 a	35.46 a	<0.01	<0.01
----- 1940 nm -----							
G	2.56 b	2.96 b	0.49 b	0.79 b	0.59 b	ns	ns
A	2.81 b	4.10 ab	-0.06 b	-0.09 b	0.00 b	ns	ns
AL	4.10 a	5.15 a	4.17 a	23.39 a	27.20 a	<0.01	<0.01

4 Means followed by equal letters (vertical) do not differ statistically from each other by the
 5 Tukey test at 5%.

6

7

1 Table 3 - Reflectance deviation from that obtained at T0, according to time and storage
 2 method.

G							
Storage periods	Center wavelength of the spectral range (nm)						
	480	550	670	740	910	1450	1940
0	4.85 b	13.51 b	4.73 b	40.78 b	44.19 a	10.05 b	2.47 b
T2	6.73 a	15.94 a	6.49 a	42.77 a	44.83 a	14.01 a	5.03 a

A							
Storage periods	Center wavelength of the spectral range (nm)						
	480	550	670	740	910	1450	1940
0	6.03 b	14.73 b	5.69 b	42.25 b	45.61 a	10.28 b	2.94 b
T2	7.27 a	15.96 a	6.95 a	43.23 a	45.47 a	14.36 a	5.75 a

AL							
Storage periods	Center wavelength of the spectral range (nm)						
	480	550	670	740	910	1450	1940
0	6.70 b	15.85 b	6.38 b	43.84 b	47.37 b	11.31 b	3.95 b
T2	10.17 a	19.42 a	9.79 a	46.94 a	49.76 a	17.31 a	8.05 a

3 Means followed by equal letters (vertical) do not differ statistically from each other by the

4 Tukey test at 5%.

5

1 The **ORCID** (Open Research and Contributors Identification) allows the creation of unique
2 digital identifiers (ORCID IDs) for researchers, facilitating the national and international
3 identification of the researcher and its production.
4 In this way we **recommend** that all authors of each submission adopt the **ORCID** record in
5 their publications.

6
7 **ORCID**
8

- 9 Tiago Rodrigues Tavares - (<https://orcid.org/0000-0002-2097-0536>)
- 10 Peterson Ricardo Fiorio - (<https://orcid.org/0000-0003-3461-357X>)
- 11 Hugo Tameirão Seixas - (<https://orcid.org/0000-0002-1206-9270>)
- 12 Amparo Cisneiros Garcia
- 13 Pedro Paulo da Silva Barros - (<https://orcid.org/0000-0002-4941-1746>)