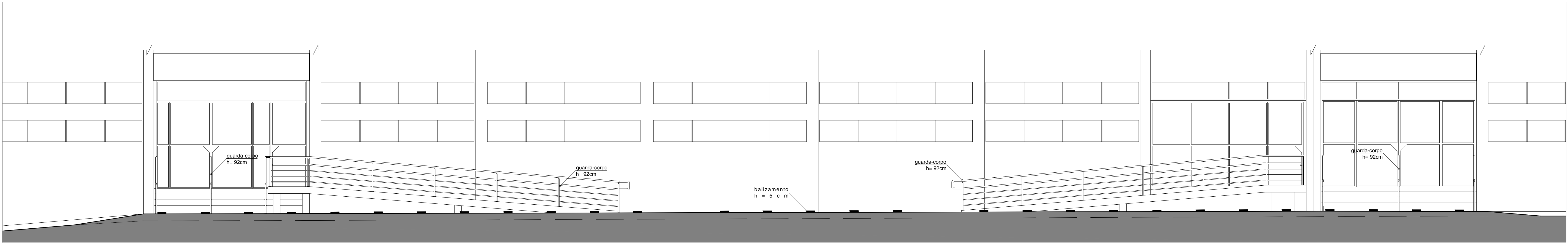
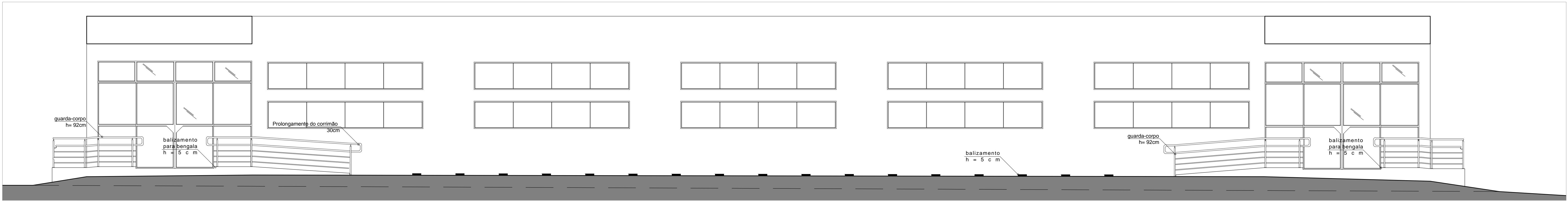


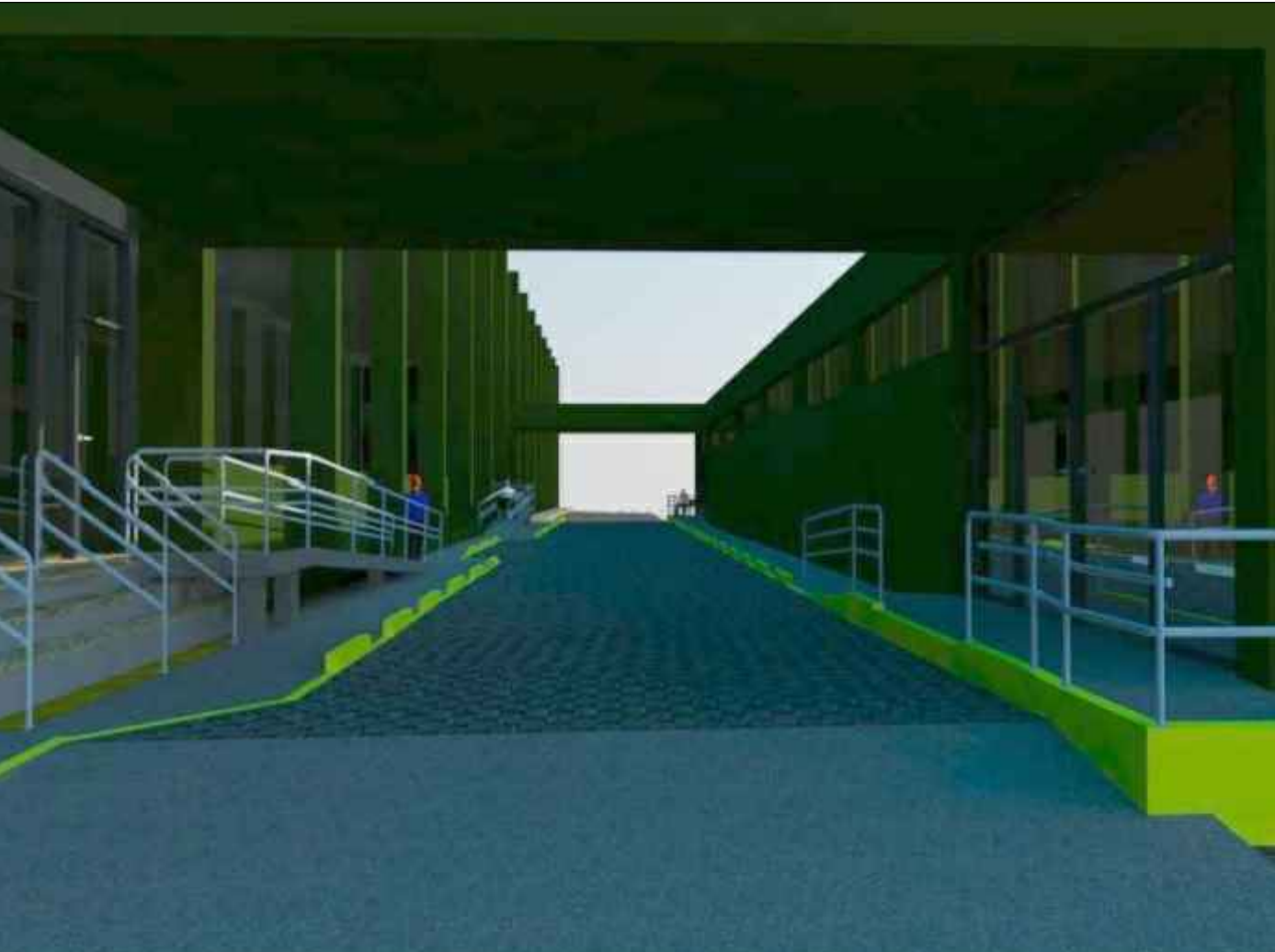
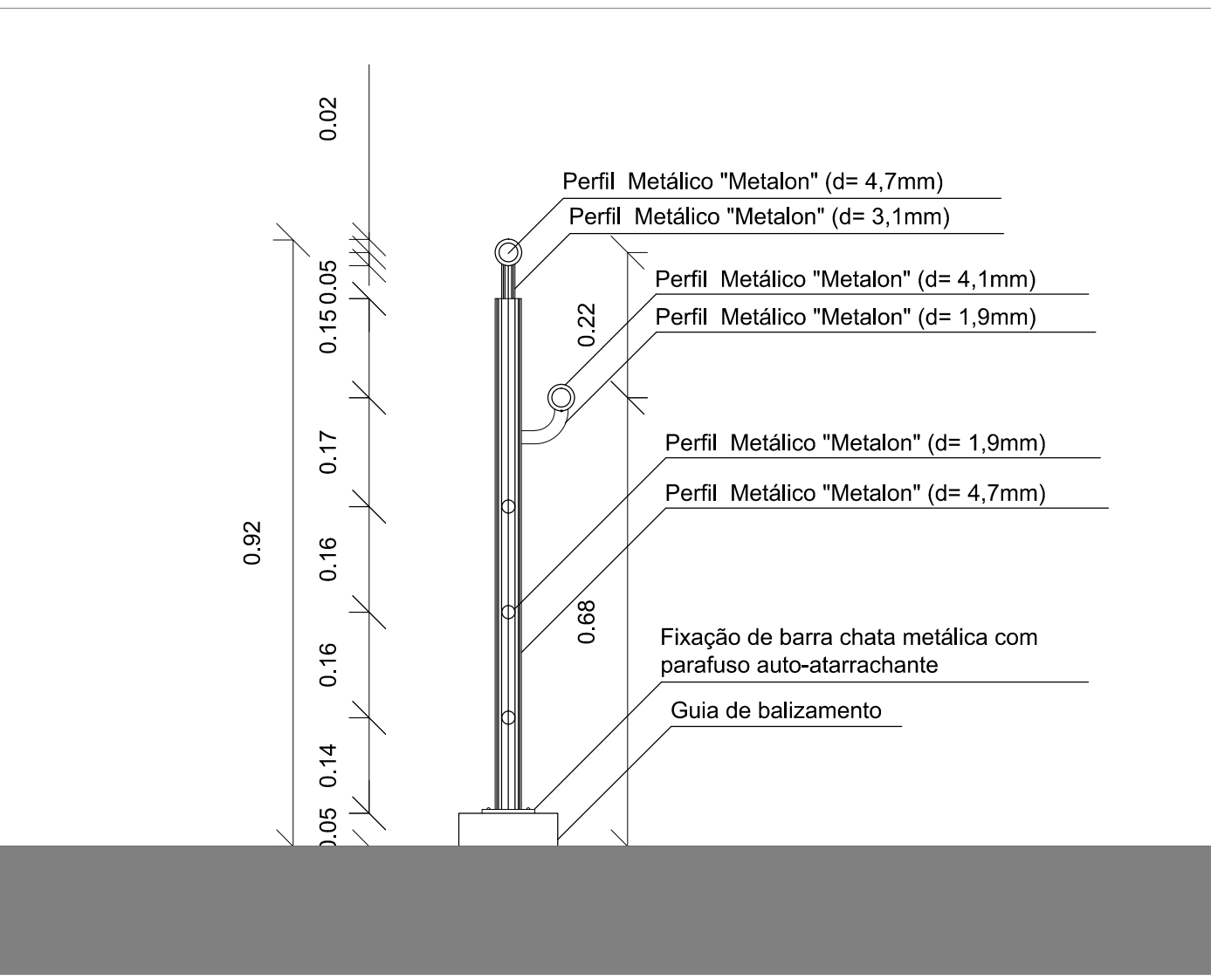
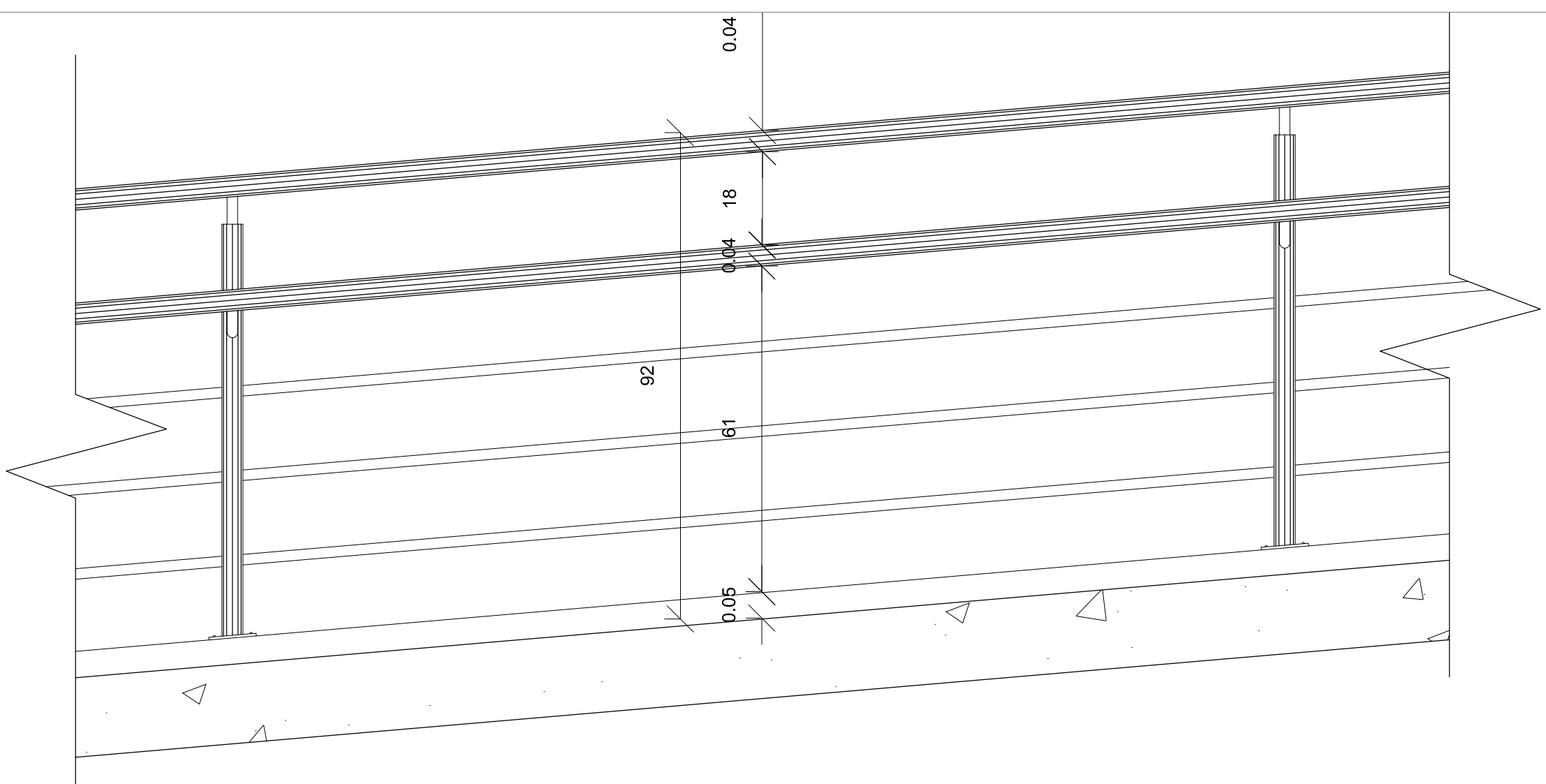
Planta Baixa
Esc.: 1:50



Fachada Prédio 18
Esc.: 1:50



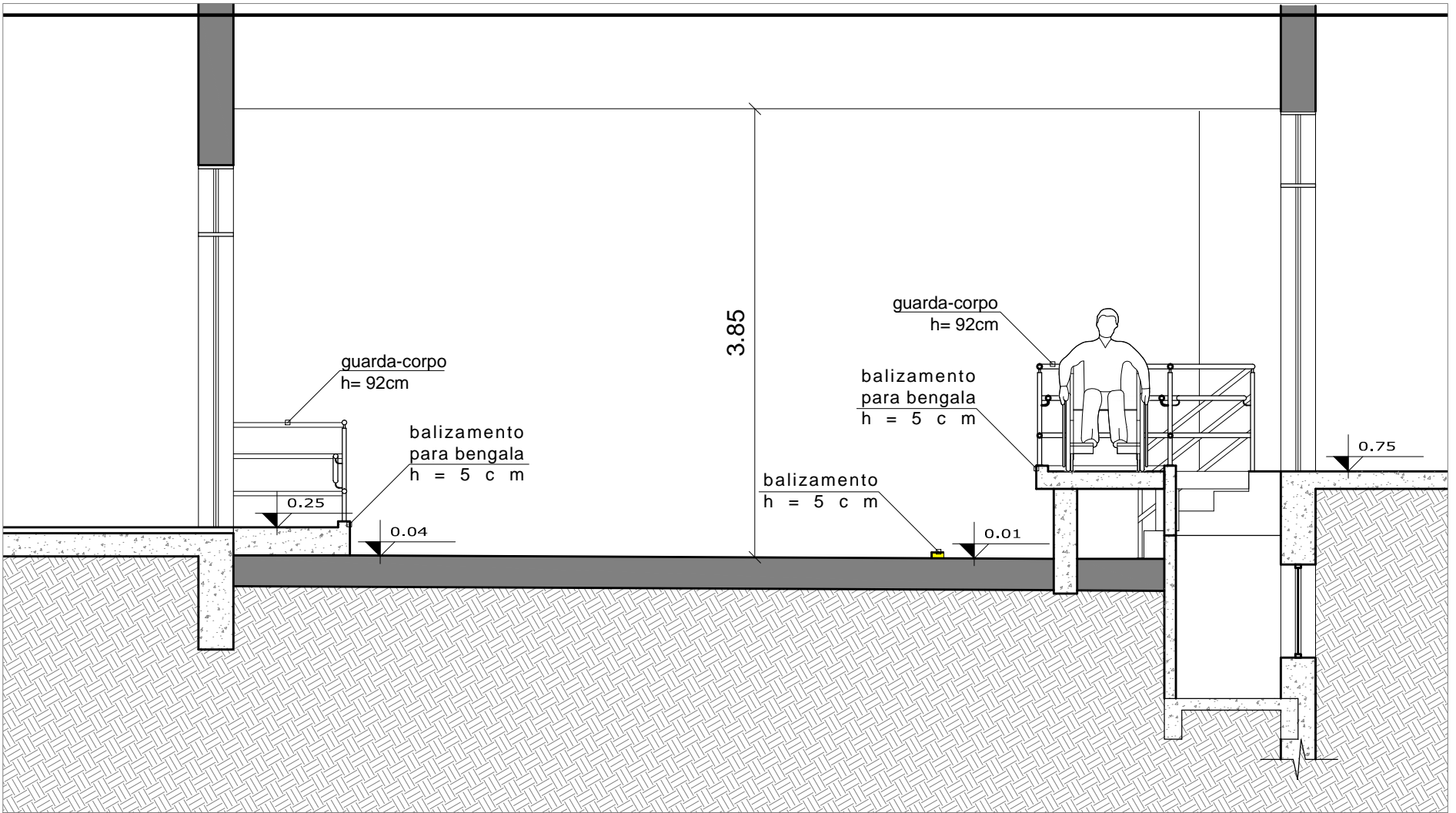
Fachada Auditório
Esc.: 1:50



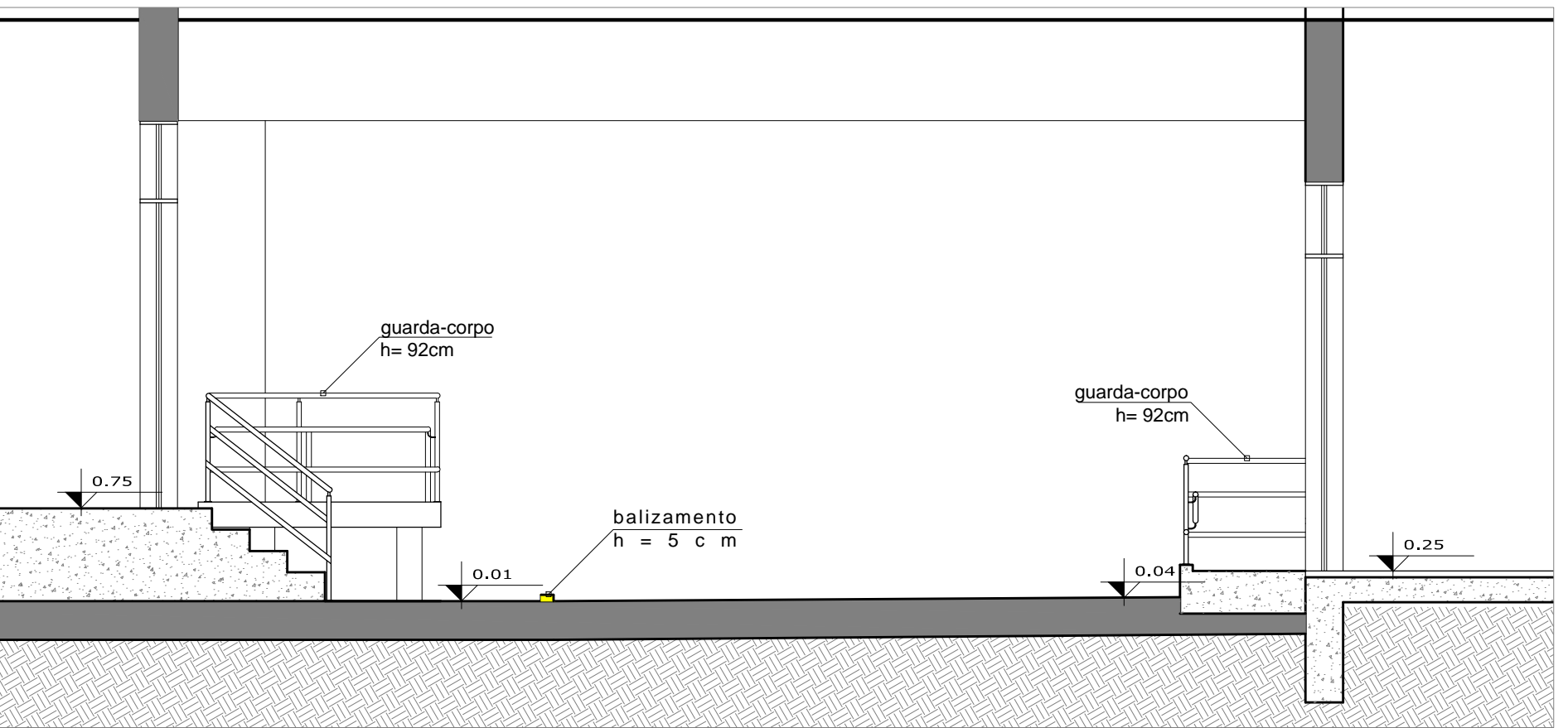
Entrada 1



Entrada auditório1



Corte AA'
Esc.: 1:50




Corte BB'
Esc.: 1:50



Entrada auditório 2



Entrada auditório 2

		PREFEITURA DA CIDADE UNIVERSITÁRIA COORDENADORIA DE OBRAS E MANUTENÇÃO DIVISÃO DE OBRAS E PROJETOS		
DATA: MAI/2014	PRÉDIO 18			
ESCALAS: 1:50	-			
Rampa de Acesso par Deficientes Físicos - Pavim. Térreo				
DESENHISTA WOLLE	Arq. Alberto Brilhante Wolle CAU A51425-0			